



Specification

Nominal size

50mm

Tank connection

Flanged: 4 x 17mm holes on a 160mm PCD

Outlet/process connection

Flanged: 4 x M16 tapped holes on a 160mm PCD

Options

Left or right hand operation

With handle or remote operation lever

Materials

Contact parts: PFA lined

Main seal: RTFE

Ball: Refer to the Ball Material Table below

External metal surfaces are painted with Epilife-2

Design Conditions

Weight:	9.9 Kg
Design Pressure (MAWP):	4 Bar
Test Pressure:	7.3 Bar
Design Temperature Min:	-40°C
Design Temperature Max:	200°C

NOTE: The Design Conditions and Section View dimensions are for the specified part number only.

Design Codes

BS EN 14432

Range

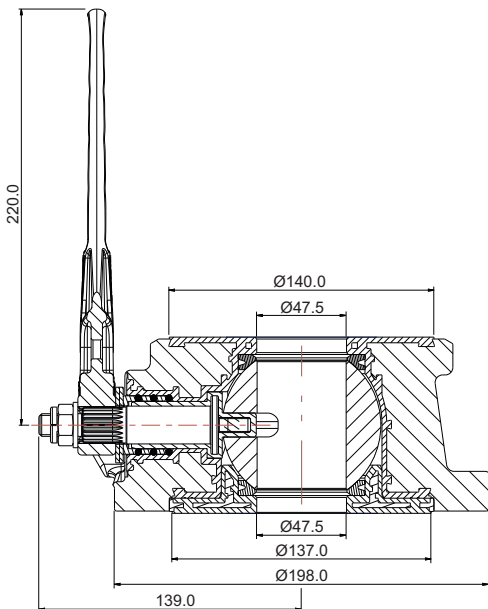
Description	Part No.
With handle, left hand	370/P660L/XX
With handle, right hand	370/P660R/XX
With remote lever, left hand	370/P66RL/XX
With remote lever, right hand	370/P66RR/XX

Note: The last two digits are related to the ball material.

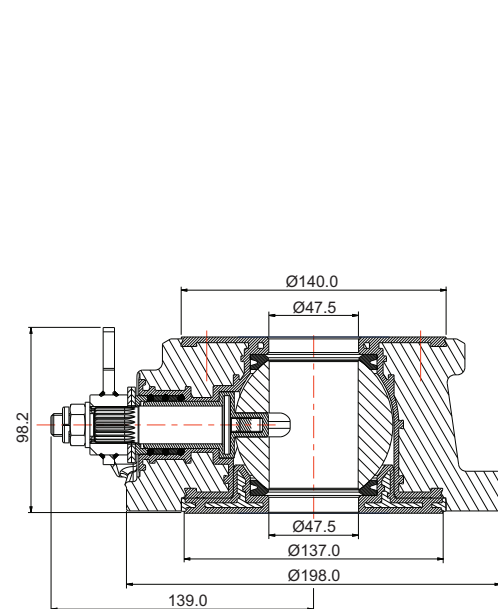
Ball Material

Material	Part No.
PFA lined 316 stainless steel	370/P66XX/PA
Solid PVDF	370/P66XX/PV
Zirconia (ZRO2)	370/P66XX/C1
Aluminium oxide (Al2O3)	370/P66XX/C2
Silicone Nitride (Si3N4)	370/P66XX/C3
Nilcra® Zirconia MS grade	370/P66XX/C4

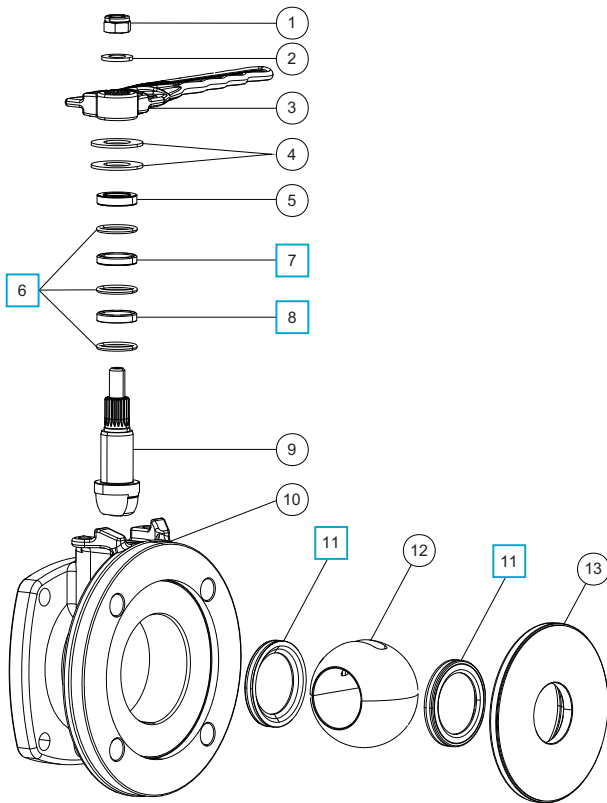
Section View: 370/P660X/XX



Section View: 370/P66RX/XX



Parts Drawing



Parts List

Item	Description	Part No.
1	M12 self locking nut	5112-007
2	M12 washer	5123-003
3	Handle	370/A0025
4	Belleville washer (2)	5113-041
5	Top stuffing collar	370/P514
6	PTFE O ring (3)	5005-654 <input type="checkbox"/>
7	Top stuffing collar	370/P512 <input type="checkbox"/>
8	Bottom stuffing collar	370/P513 <input type="checkbox"/>
9	PFA lined spindle	370/P666
10	PFA lined body	370/P661
11	RTFE seal (2)	370/P665 <input type="checkbox"/>
12	50mm ball *Note	370/P508XX
13	PFA lined seal clamp plate	370/P664

NOTE: The material changes the part number. Refer to the Ball Material table on page 1 of 2.

Seal Kit

Description	Part No.
All parts marked <input type="checkbox"/> in the Parts List	370/P66SK