



## Specification

### Nominal size

DN100

### Inlet connection

4" TTMA

### Outlet connection

Compatible with API RP 1004

### Properties

4 wrap-around triggers that connect with over 60% of the loading adaptor circumference

### Materials

Contact parts: hard anodised aluminium & stainless steel  
Main seal: A range is available, refer to Seal Data p3.

## Design Conditions

Weight:	12.6 Kg
Design Pressure (MAWP):	6 Bar
Test Pressure:	10 Bar
Maximum Surge Pressure:	15 Bar
Design Temperature Min/Max:	Refer to Seal Data, p3

**NOTE:** The Design Conditions and Section View dimensions are for the specified part number only.

### Design Codes

The Safeload coupler obeys:  
ATEX Group II, Cat 2  
EN 13083  
API RP1004 (2003)  
Energy Institute Specification: Couplers for the bottom loading of petroleum road tankers

## Range

Description	Part No.
With stainless steel handle <b>*Note 1</b>	CE94/2500XX
With aluminium handle <b>*Note 1</b>	CE94/2400XX

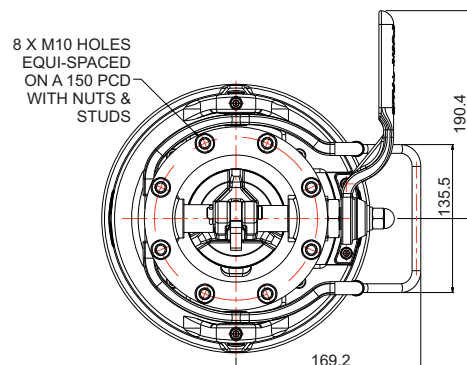
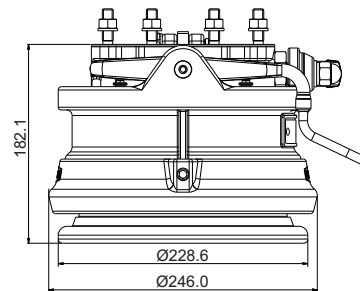
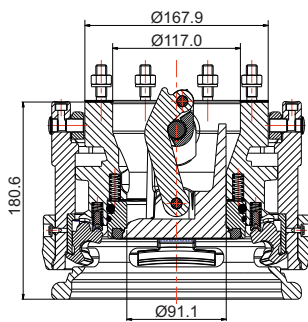
**NOTE 1:** The seal material changes the Part No.

## Related Parts

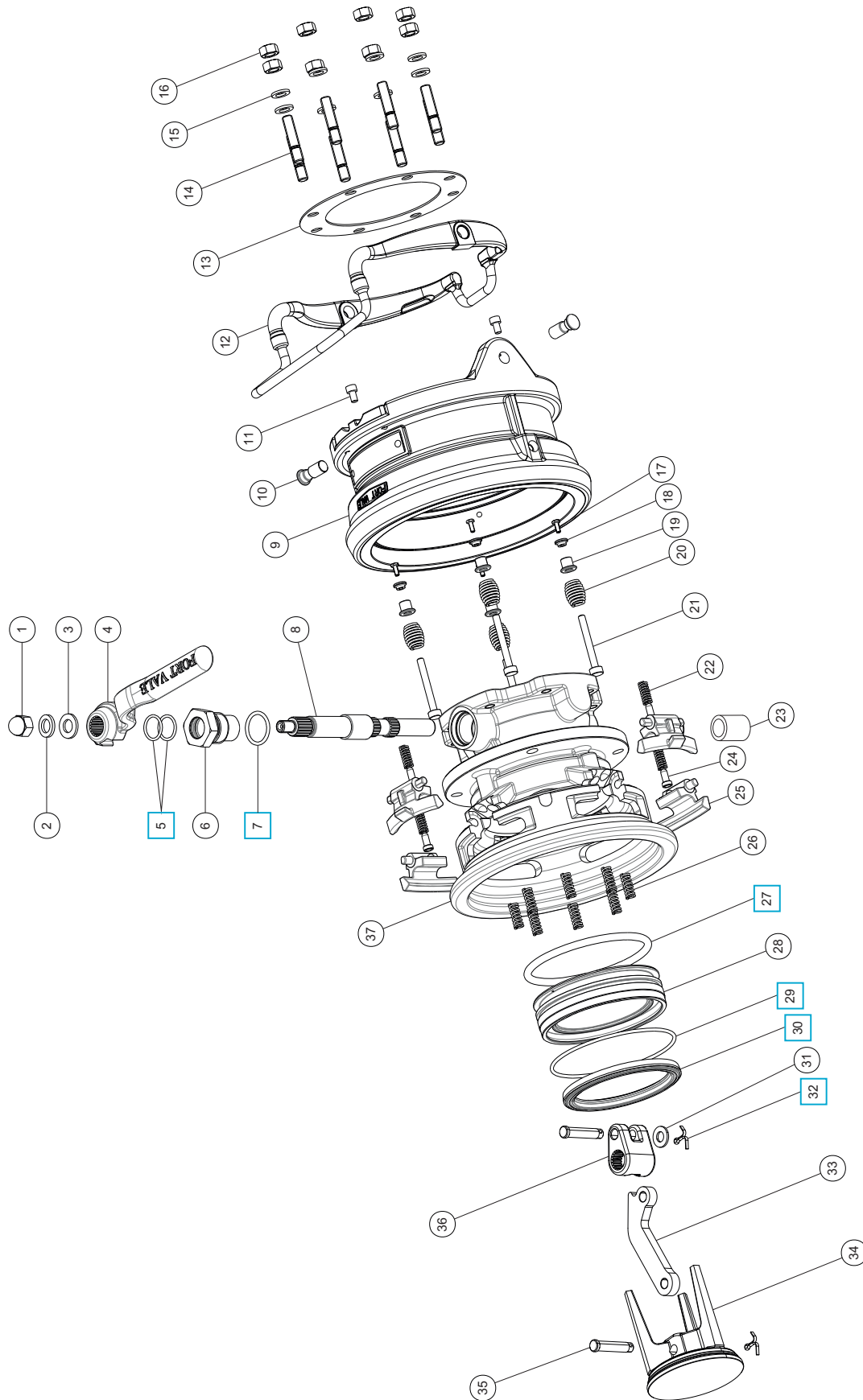
Description	Part No.
Loading adaptor wear gauge	94/2150
Coupler parking nose	94/25PC
Coupler seal replacement tool	400/9420
Coupler wear gauge	94/3050
4" TTMA check valve <b>*Note 2</b>	94/36XXXX/X

**NOTE 2:** The valve specification changes the Part No.

## Section View



## Parts Drawing



## Parts List

Item	Description	Part No.
1	M12 domed nut	5112-050
2	M12 spring washer	5113-010
3	M12 washer	5123-003
4	Splined handle	94/2575
5	Spindle O ring (2) *Note	5005-336XX <input type="checkbox"/>
6	Spindle lock bush	94/2513
7	Bush O ring *Note	5005-214XX <input type="checkbox"/>
8	Spindle	94/2511
9	Outer housing & ring assembly	94/2504
10	Release handle pivot pin (2)	94/2577
11	M6 capscrew (2)	5111-061
12	Release handle	94/3080
13	4" TTMA gasket	94/1044
14	Inlet flange stud (8)	94/1040
15	M10 flat spring washer (8)	5113-002
16	M10 full nut (8)	5112-002
17	M4 hex head set screw (4)	5111-064
18	Spring retainer washer (4)	94/2529
19	Guide bush (4)	94/2048
20	Spring (4)	10146
21	Spring retainer (4)	94/1016
22	Trigger spring (4)	94/2025
23	Spindle bush	94/2522
24	Trigger spring guide (4)	94/2026
25	Extended locking trigger (4)	94/2555CE
26	Energizing spring (8)	94/2024
27	Seal carrier O ring *Note	94/1034XX <input type="checkbox"/>
28	Seal carrier	94/2507
29	Wiper O ring *Note	5005-584XX <input type="checkbox"/>
30	Main seal *Note	94/1006XX <input type="checkbox"/>
31	M10 washer	5113-025
32	Split pin (2)	5118-050 <input type="checkbox"/>
33	Lever arm	94/1009A
34	Poppet	94/2518
35	Pivot pin (2)	94/1054
36	Splined crank block	94/2528
37	Inner housing	94/2501

**NOTE:** The specification changes the Part No.

## Seal Data

Seal Material	Seal Temp. Min/Max	Seal Colour	Coupler Part No.
Viton B	-13°C/50°C	Black	CE94/2500
Viton GFLT-S	-23°C/50°C	Grey	CE94/2500GF
Ultra low temp. fluorocarbon	-40°C/50°C	Brown	CE94/2500MF
Perfluoroelastomer	-15°C/50°C	Green	CE94/2500PF

**Seal Kit** - All parts marked  in the Parts List

Seal Material	Part No.
Viton B	94/25SK
Viton GFLT-S	94/25SKGF
ULT fluorocarbon	94/25SKMF
Perfluoroelastomer	94/25SKPF