

Specification

Nominal size

50mm

Tank connection

Flanged: 4 x 18mm holes on a 126mm PCD

Outlet/Process connection

Flanged: 4 x 18mm slots on a 120 - 127mm PCD

Options

Finish: Corrosion-resistant paint on external surfaces to prevent damage from corrosive cargo vapour/splash

Materials

Contact parts: PFA lined

Main seal: PTFE

Refer to Range for other PFA Lined Ball Valves

Alternatives are available, refer to the Design Options page

Design Conditions

Weight:	9.76 Kg
Design Pressure (MAWP):	6.9 Bar
Test Pressure:	12.6 Bar
Design Temperature Min:	-40°C
Design Temperature Max:	200°C

NOTE: The Design Conditions and Section View dimensions are for the specified part number only.

Design Codes

BS EN14432
RID

Range

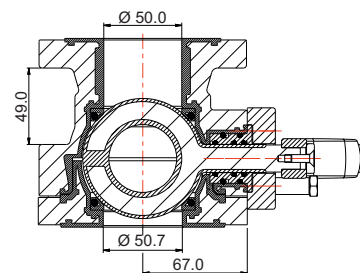
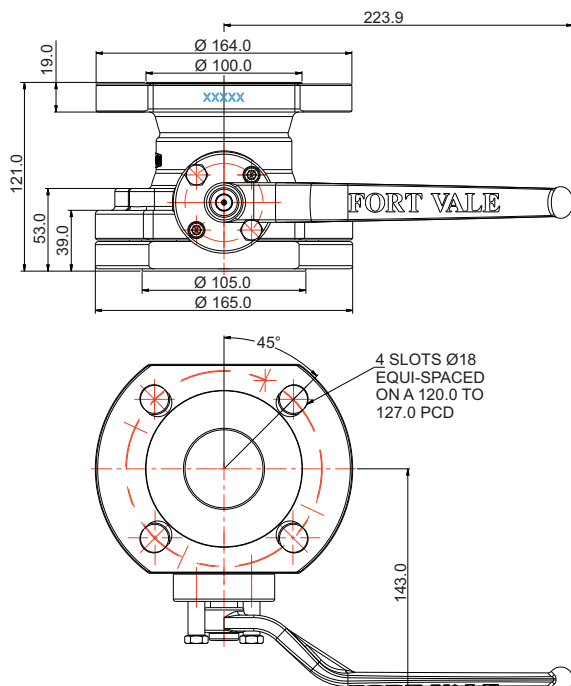
Description	Part No.
25mm reduced bore ball valve PFA lined	530/P100
50mm full bore ball valve PFA lined	370/P200
50mm ball valve PFA lined, painted body	370/P200PA
80mm full bore ball valve PFA lined	360/P030X *

*The part number changes for left or right hand operated

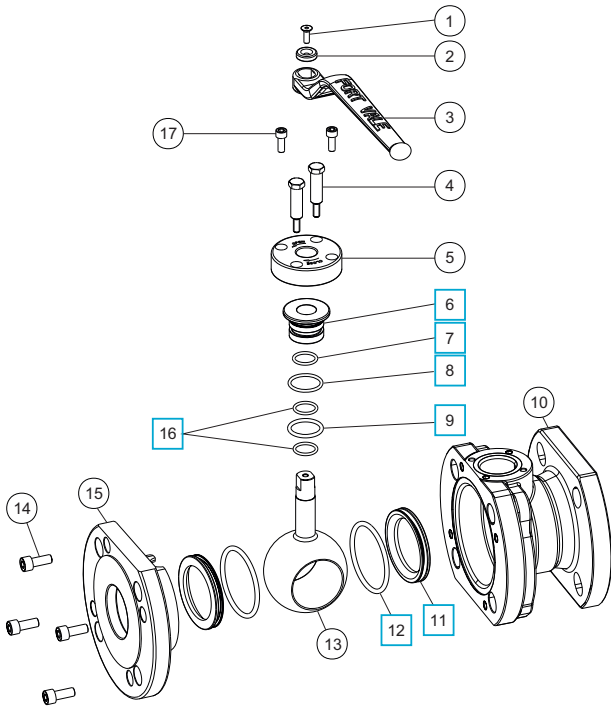
Related Parts

Description	Part No.
Stud kit	311/3790
PFA lined blind flange	370/4239PFA

Section View



Parts Drawing



Parts List

Item	Description	Part No.	
1	M5 screw	5111-113	
2	Retaining washer	20370/5	
3	Handle	370/3306/1	
4	Stop pin (2)	370/P107	
5	Stuffing plate	370/P114	
6	Seal carrier	370/P113	<input type="checkbox"/>
7	Viton O ring	ORB115VL	<input type="checkbox"/>
8	Viton O ring	ORB121VL	<input type="checkbox"/>
9	Perfluoroelastomer O ring	5005-214PER	<input type="checkbox"/>
10	PFA lined body	370/P110/2	
11	PTFE ball seal (2)	370/P115	<input type="checkbox"/>
12	Fortyt O ring (2)	ORM0580400F0	<input type="checkbox"/>
13	PFA lined spindle/ball	370/P101	
14	M8 cap screw (4)	5111-010	
15	PFA lined clamp plate	370/P111	
16	Perfluoroelastomer O ring (2)	5005-370P	<input type="checkbox"/>
17	M6 cap screw (2)	5111-015	

Seal Kit

Description	Part No.
All parts marked <input type="checkbox"/> in the Parts List	370/P100SK