

## Specification

### Nominal size

DN25

### Tank connection

Flanged: 4 x 18mm holes on a 89mm PCD

### Outlet/Process connection

Flanged: 4 x 18mm holes on a 89mm PCD

### Options

Fire safe specification or lethal service specification - refer to Design Conditions: NOTE

Left or right hand operation

### Materials

Contact parts: 316 stainless steel

Main seal: TFM PTFE

## Design Conditions

Weight:	4.77 Kg
Design Pressure (MAWP):	16 Bar
Test Pressure:	24 Bar
Design Temperature Min:	-40°C
Design Temperature Max:	205°C

**NOTE:** The fire safe specification ball valve is not compatible with lethal service conditions. The lethal service specification ball valve is compatible with fire safe and lethal service conditions

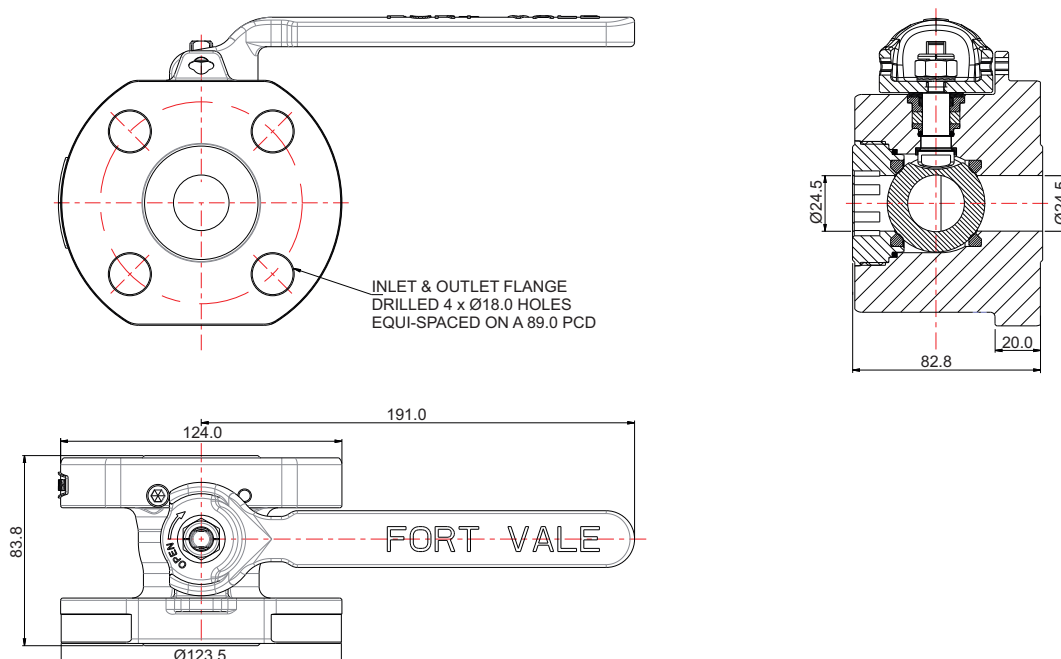
### Design Codes

BS EN14432, EN12516-2, EN10497  
API 607

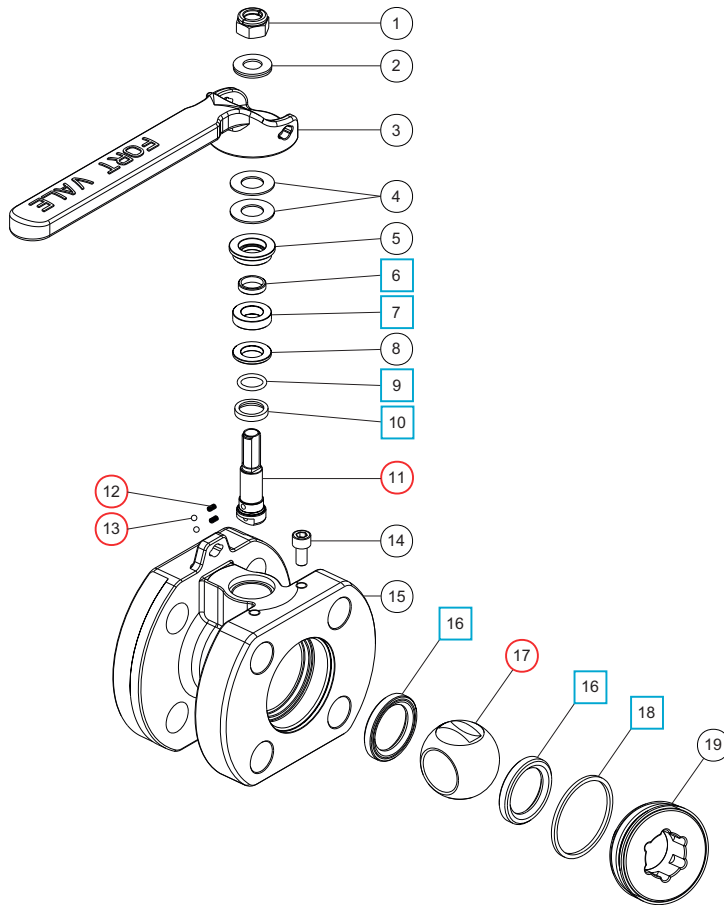
## Range

Description	Part No.
1" fire safe valve, left hand	310/5000FSL
1" fire safe valve, right hand	310/5000FSR
1" fire safe/lethal service valve, left hand	310/5000LSL
1" fire safe/lethal service valve, right hand	310/5000LSR

## Section View



## Parts Drawing



### Parts List

Item	Description	Part No.	
1	M10 locking nut *Note	5112-008-XX	
2	M10 locking washer (pair)	5113-191	
3	Handle *Note	310/0125XX	
4	12mm Belleville washer (2)	5113-045	
5	Stuffing gland	310/3458	
6	Bearing bush	310/3443	□ ○
7	Gland seal	310/0133	□ ○
8	Stuffing gland	310/0130	
9	Perfluoroelastomer O ring	5005-212PER	□ ○
10	Bottom bearing	310/0104FS	□ ○
11	Spindle	310/0120FS	○
12	Plunger spring (2)	370-3469	○
13	3mm ball (2)	10154SS	○
14	M6 cap screw	5111-034	
15	1" ball valve body *Note	310/5010XX	
16	TFM PTFE ball seat (2)	310/0102FS	□ ○
17	Ball *Note	370/1002XX	○
18	Body seal	310/0106GR	□ ○
19	Seal retainer	310/0176/2	

### Seal Kit - All parts marked □ in the Parts List

Description	Part No.
For fire safe & lethal service valves	310/50LSK

### Repair Kit - All parts marked ○ in the Parts List

Description	Part No.
For fire safe valves only	310/50FRK
For lethal service valves only	310/50LRK

NOTE: The valve specification changes the part number