



## Specification

### Nominal size

32mm

### Tank connection

Flanged: 4 x 10.8mm holes on a 103.5mm PCD

### Outlet/Process connection

Flanged: 4 x Ø18mm open slots on a 98.4 min. I/D

### Properties

¼” BSP gauge connection, handle with TIR

### Materials

Contact parts: 316 stainless steel

Main seal: PTFE

Alternatives are available, refer to the Design Options page

## Design Conditions

Weight:	4.4 Kg
Design Pressure (MAWP):	7 Bar
Test Pressure:	15 Bar
Design Temperature Min:	-40°C
Design Temperature Max:	205°C

**NOTE:** The Design Conditions and Section View dimensions are for the specified part number only.

**Design Code**  
BS EN14432

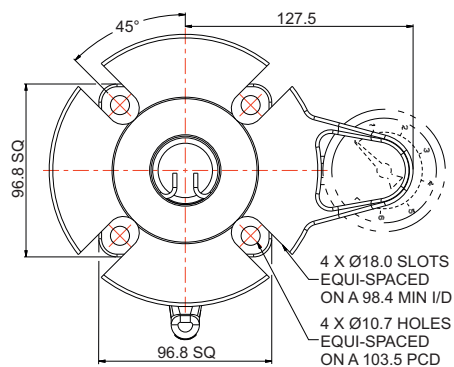
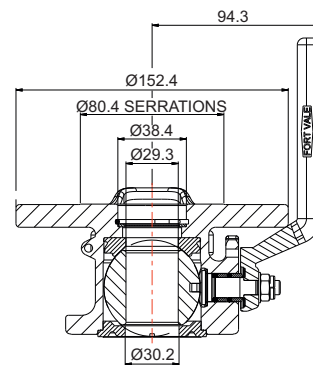
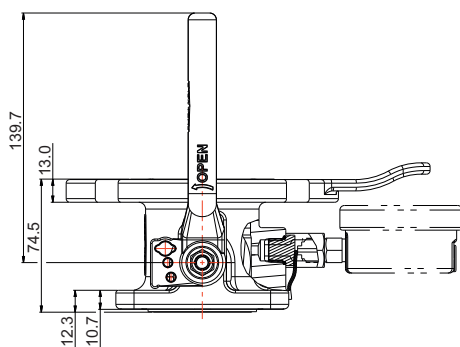
## Range

Description	Part No.
Standard specification	530/1000
With gauze	530/1000F

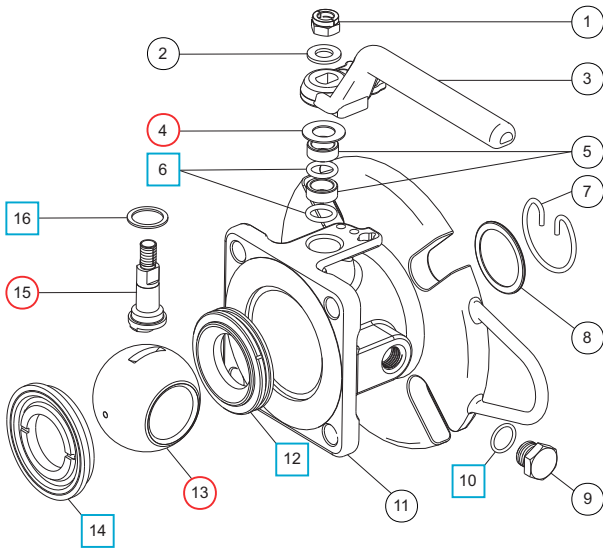
## Related Parts

Description	Part No.
Pressure gauge	920/07BBSP
Gauge adaptor	352/4004
Blind flange	530/8053CM
Solid PTFE outlet gasket	5005-348
Stud kit	350/1300
Weld-in flange	350/0025

## Section View



## Parts Drawing



## Parts List

Item	Description	Part No.
1	Self-locking nut	5112-031
2	M8 washer	5113-005
3	Handle	530/0020
4	8mm Belleville washer	5113-036 <span style="color: red;">○</span>
5	Stuffing collar (2)	530/0003
6	PTFE O ring (2)	5005-008 <span style="color: blue;">□</span> <span style="color: red;">○</span>
7	Snap ring <b>*Note</b>	5120-017
8	Gauze filter <b>*Note</b>	353/0010
9	¼” BSP plug	5128-005
10	PTFE O ring	5005-048 <span style="color: blue;">□</span> <span style="color: red;">○</span>
11	Body	530/1100
12	PTFE front seal	5005-006 <span style="color: blue;">□</span> <span style="color: red;">○</span>
13	Ball	350/0002 <span style="color: red;">○</span>
14	PTFE rear seal	5005-007 <span style="color: blue;">□</span> <span style="color: red;">○</span>
15	Spindle	530/0001 <span style="color: red;">○</span>
16	PTFE thrust seal	5003-002 <span style="color: blue;">□</span> <span style="color: red;">○</span>

**NOTE:** Optional part, see Range 530/1000F

## Seal Kit

Description	Part No.
All parts marked <span style="color: blue;">□</span> in the Parts List	530/00SK

## Repair Kit

Description	Part No.
All parts marked <span style="color: red;">○</span> in the Parts List	530/00RK