



Specification

Nominal size

DN100

Inlet/hose connection

Flanged: 8 x M10 holes on a 149.2mm PCD - 4" TTMA

Outlet/coupler connection

Flanged: 8 x 11mm holes on a 149.2mm PCD - 4" TTMA

Spring pressure

0.13 Bar, 0.2 Bar, 0.3 Bar, 0.4 Bar

Properties

The poppet has a secondary check valve to relieve back-pressure

Materials

Contact parts: aluminium & stainless steel

Main seal: A range is available, refer to Seal Data

Design Conditions

Weight:	2.6 Kg
Design Pressure (MAWP):	6 Bar
Test Pressure:	9 Bar
Design Temperature Max:	Refer to Seal Data

Seal Data

Seal Material	Seal Temp Min/Max
Viton B	-13°C / 50°C
Viton GFLT-S	-23°C / 50°C
Ultra low temp. fluorocarbon	-40°C / 50°C

NOTE: The Design Conditions and Section View dimensions are for the specified part number only.

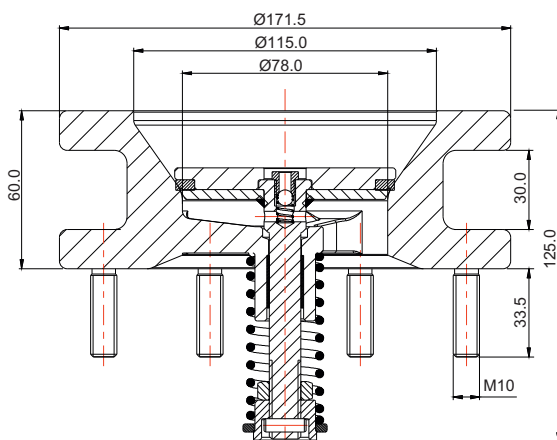
Range

Description	Part No.
Poppet with check valve *Note	94/3679XX/X
Poppet with fluid transfer hole *Note	94/3691XX/X

NOTE: The valve specification changes the Part No.

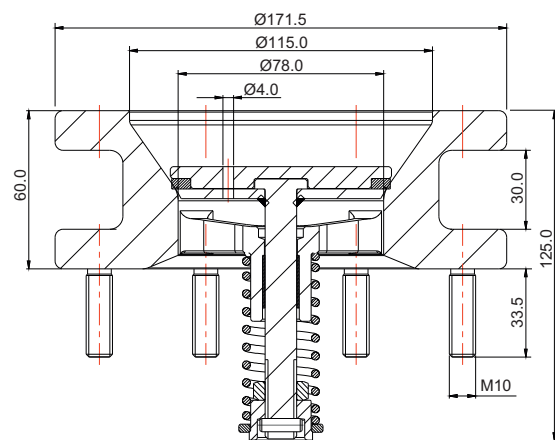
Section View

Part No. 94/3679XX/X



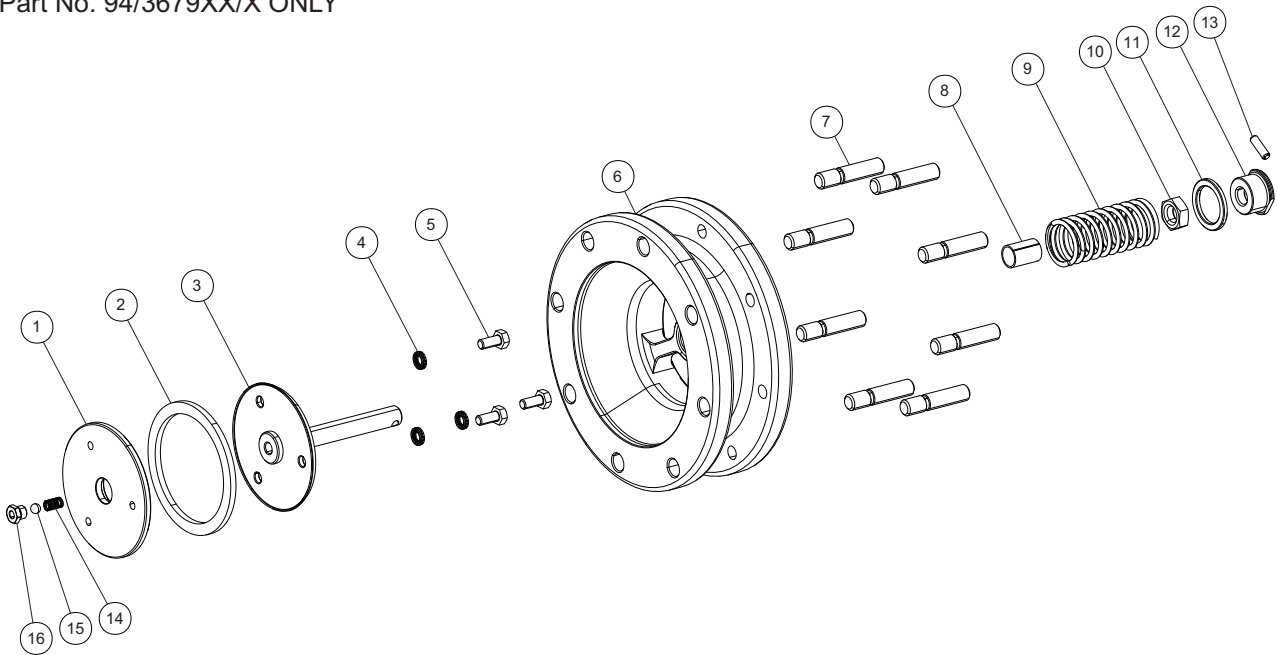
Section View

Part No. 94/3691XX/X



Parts Drawing

Part No. 94/3679XX/X ONLY



Parts List

Part No. 94/3679XX/X ONLY

Item	Description	Part No.
1	Poppet base plate	94/3710/1
2	Poppet seal *Note	94/3696XX
3	Poppet	94/3664
4	M6 Nord Lock washer pair (3)	5113-180
5	M6 hex bolt (3)	5111-190
6	Body	94/3694
7	M10 stud (8)	94/1040
8	Bearing	94/3688
9	Poppet spring *Note	94/3674/X
10	M12 half nut	5112-017
11	Spring washer	94/3681
12	Stop collar	94/3684
13	5mm roll pin	5128-122
14	Spring	5104-115
15	6mm ball	94/3661
16	Check valve nipple	94/3662

NOTE: The valve specification changes the Part No.