



Specification

Nominal size/body angle

2" / 90°

Tank connection

Tongue & groove flanged: 4 x 7/8" holes on a 6 1/4" PCD
Obeyes AAR E19.8

Process connection

2" NPT with 2" NPT plug and chain

Properties/compatible

Manually operated by a handwheel. Use with 451/0660
2" or 451/0650 3" shut-off valve

Materials

Contact parts: CF3M, 316L stainless steel & Nitronic 60
Main seal: RTFE

Design Conditions

Weight:	28.3 Lbs (12.9 Kg)
Design Pressure (MAWP):	500 PSI (34.5 Bar)
Test Pressure:	747 PSI (51.5 Bar)
Design Temperature Min:	-40°F (-40°C)
Design Temperature Max:	392°F (200°C)

AAR No: E232106

Flow Performance

2" 90° Angled Transfer valve only (no excess flow valve)

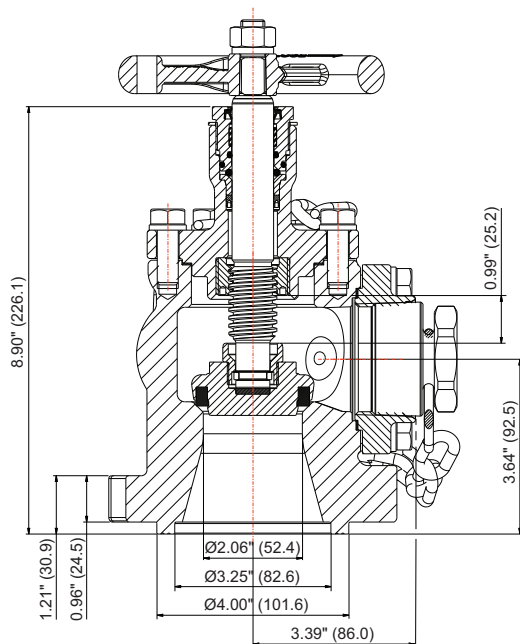
Cv Fill:	151
Cv Discharge:	77

NOTE: The Design Conditions and Section View dimensions are for the specified part number only.

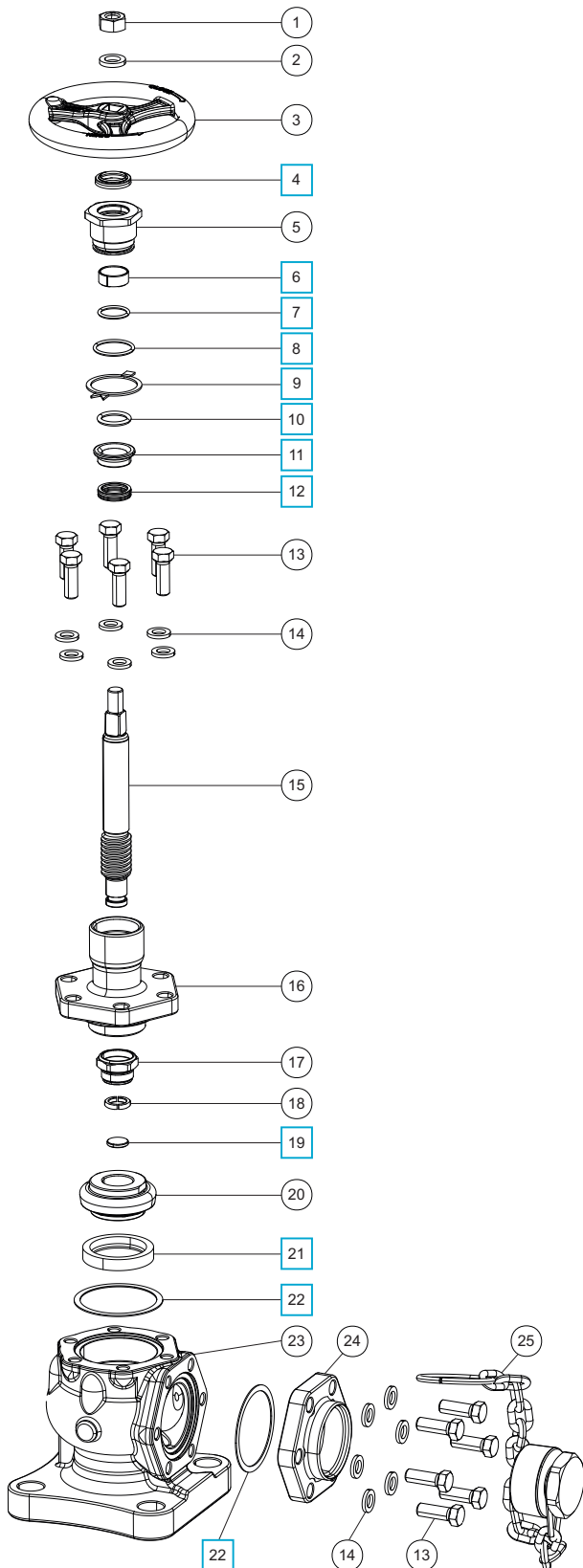
Features

- Stainless steel & Nitronic 60 parts for maximum durability, corrosion resistance and anti-galling properties
- Optimized valve body geometry for a high Cv
- Tapered seat centralizes the poppet and reduces wear to the main seal
- Pressed main seal with no wetted fasteners eliminates a possible cargo trap
- Self-energizing main stem seal gives a more reliable and stable performance in conditions with variable temperatures
- Low torque operation for ease of use

Section View



Parts Drawing



Parts List

Item	Description	Part No.	
1	1/2" UNC full nut	5112-178	
2	1/2" spring washer	5213-034	
3	Handwheel	451/0029	
4	Scraper seal	409/0233	<input type="checkbox"/>
5	Top stuffing nut	451/0004	
6	Split bearing	451/0028	<input type="checkbox"/>
7	Viton O ring	ORB118VL	<input type="checkbox"/>
8	Viton O ring	ORB123VL	<input type="checkbox"/>
9	Tab washer	451/0036	<input type="checkbox"/>
10	PTFE O ring	5005-111	<input type="checkbox"/>
11	Stem seal bearing	451/0035	<input type="checkbox"/>
12	Primary stem seal	409/0231	<input type="checkbox"/>
13	7/16" UNC bolt (12)	5121-235	
14	7/16" spring washer (12)	5213-039	
15	Spindle	451/0002	
16	Body top	451/0015/1	
17	Bottom stuffing nut	451/0019	
18	Retaining collar	451/0018	
19	Bottom bearing	451/0017	<input type="checkbox"/>
20	Poppet head	451/0001	
21	Poppet seal	451/0003	<input type="checkbox"/>
22	Outlet seal (2)	451/0006	<input type="checkbox"/>
23	Body	451/0010	
24	2" NPT outlet adaptor	451/0005	
25	2" NPT plug with chain	451/0080	

Seal Kit

Description	Part No.
All parts marked <input type="checkbox"/> in the Parts List	451/0000SK