

## Specification

### Nominal size

DN100

### Tank connection

Flanged: 8 x M16 holes on a 180mm PCD

### Outlet/process connection

Flanged: 8 x M16 holes on a 180mm PCD

### Options

Left or right hand operation

### Materials

Contact parts: 316 stainless steel

Main seal: PTFE

Alternatives are available, refer to the Design Options page

## Design Conditions

Weight:	25.2 Kg
Design Pressure (MAWP):	7.5 Bar
Test Pressure:	13.7 Bar
Design Temperature Min:	-40°C
Design Temperature Max:	200°C

**NOTE:** The Design Conditions and Section View dimensions are for the specified part number only.

### Design Codes

BS EN 14432  
BS EN 12516-2

## Range

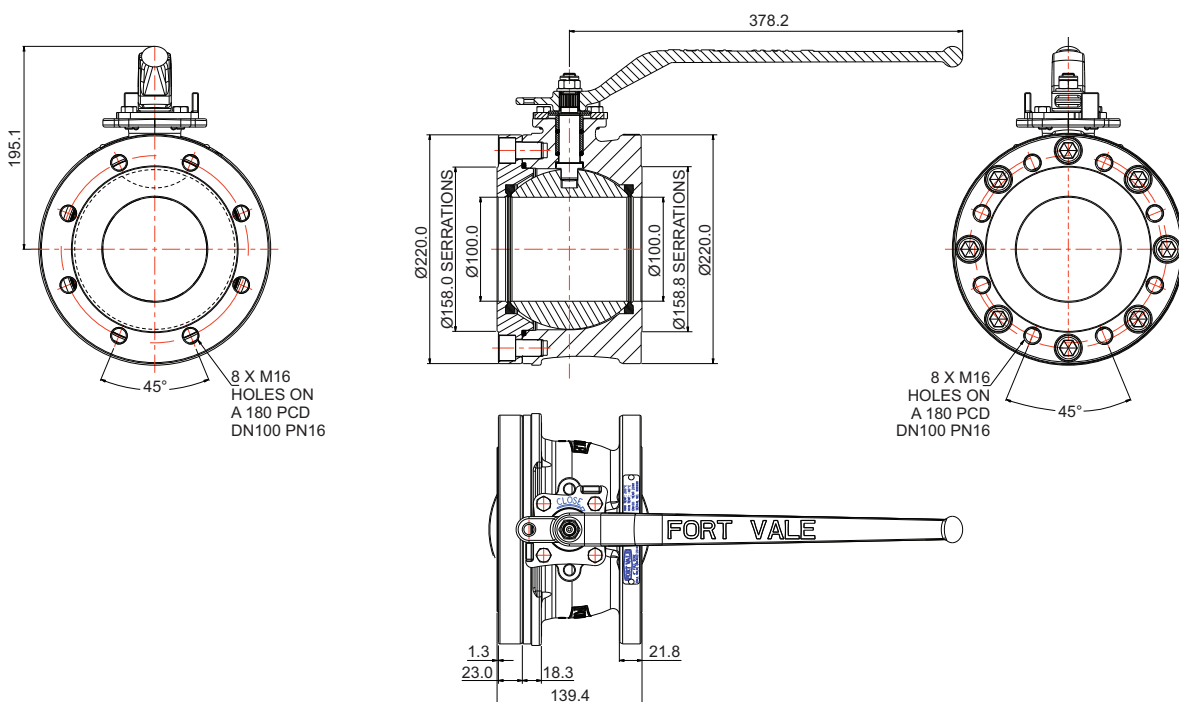
Description	Part No.
Manually operated *Note	460/E000X
Pneumatically actuated	460/E000PN
Carbon steel body *Note	460/E000XM

**NOTE:** The valve specification changes the part number

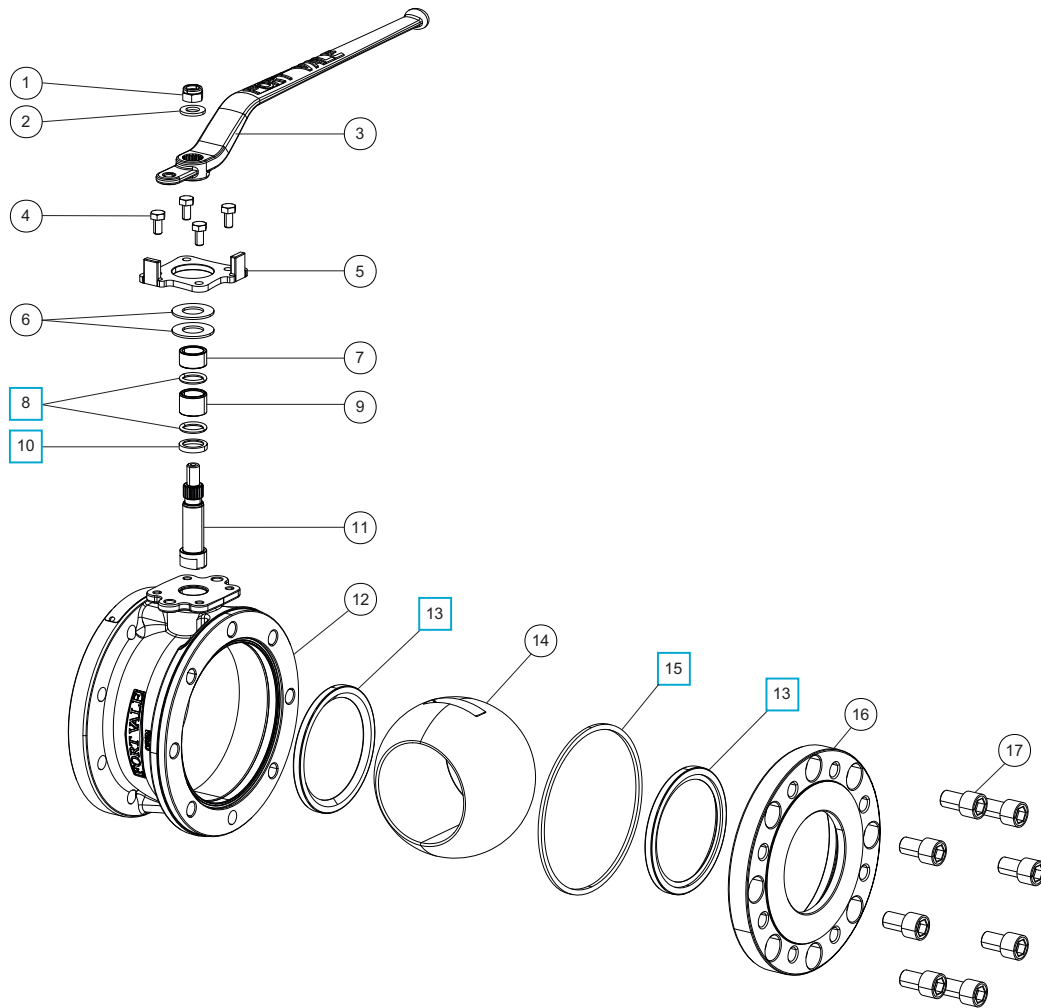
## Related Parts

Description	Part No.
4" BSP eccentric outlet flange	SP468/8047
4" BSP blank cap	10304PSC
Blind flange	360/8108
CNAF/PTFE gasket	5005-468
Solid PTFE gasket	5005-468P

## Section View



## Parts Drawing



### Parts List

Item	Description	Part No.
1	M12 self-lock nut	5112-007
2	M12 washer	5123-003
3	Handle	360/3416
4	M8 hex bolt (4)	5111-822
5	Stop plate	460/A0027X
6	20mm Belleville washer (2)	5113-041
7	Top stuffing collar	360/3412
8	PTFE O ring (2)	5005-113 <input type="checkbox"/>
9	Bottom stuffing collar	460/A0010
10	Bottom bearing	360/3421 <input type="checkbox"/>
11	Spindle	460/A0009
12	Body	460/A0008
13	PTFE main seal (2)	5005-0010 <input type="checkbox"/>
14	4" Ball	460/5051S1
15	PTFE body seal	5005-0011 <input type="checkbox"/>
16	Inlet flange	460/A0002
17	M16 cap screw (8)	5111-079

### Seal Kit

Description	Part No.
All parts marked <input type="checkbox"/> in the Parts List	460/E0SK