



## Specification

The blind weld-in flange is welded into the bottom of the vessel in the normal discharge valve position. If the vessel is changed to standard service, the centre section of the flange can be cut out so that a 45° discharge valve assembly can be installed.

### Drilling pattern

8 x M12 holes equi-spaced on a 178mm PCD

### Compatible

Standard 45° Cleanflow, Uniflow, Highlift & Univalve footvalves

### Material

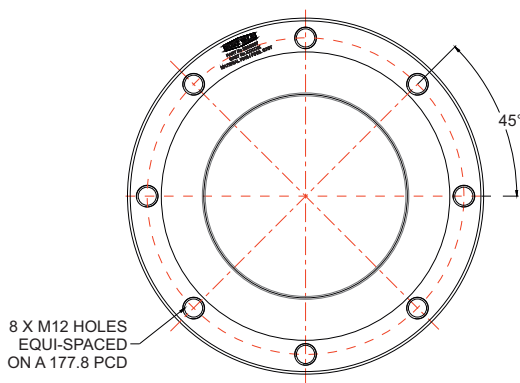
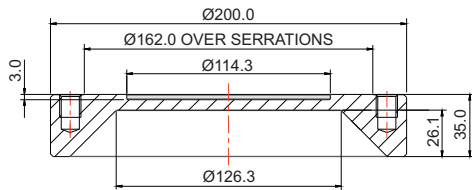
316 stainless steel

## Design Conditions

Weight	4.5 Kg
Design Pressure (MAWP):	6.67 Bar
Test Pressure:	10.0 Bar
Design Temperature Min:	-40°C
Design Temperature Max:	130°C

NOTE: The Design Conditions and Section View dimensions are for the specified part number only.

## Section View



8 X M12 HOLES  
EQUI-SPACED  
ON A 177.8 PCD