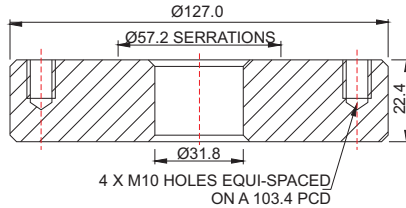


Part No: 350/0025



Section View



Specification

Flange type
Weld-in flange

Nominal size
32mm

Flange drilling
4 x M10 holes equi-spaced on a 103.4mm PCD

Material
316L stainless steel

Compatible valve
1½" airline ball valve

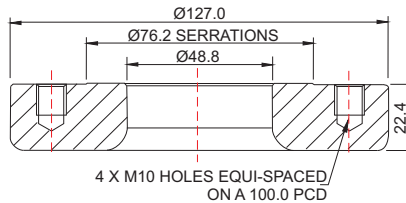
Related Parts

Description	Part No.
Stud kit	350/1300

Part No: 355/1000



Section View



Specification

Flange type
Weld-in flange

Nominal size
50mm

Flange drilling
4 x M10 holes equi-spaced on a 100.0mm PCD

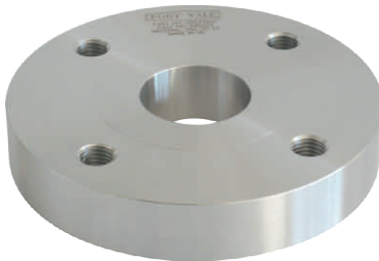
Material
316L stainless steel

Compatible valve
2" BSP airline butterfly valve

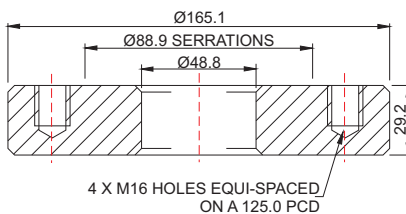
Related Parts

Description	Part No.
Stud kit	350/1300

Part No: 355/3100



Section View



Specification

Flange type
Weld-in flange

Nominal size
50mm

Flange drilling
4 x M16 holes equi-spaced on a 125.0mm PCD

Material
316L stainless steel

Compatible valve
2" flanged butterfly valve
2" flanged ball valve

Related Parts

Description	Part No.
Stud kit	311/3700