



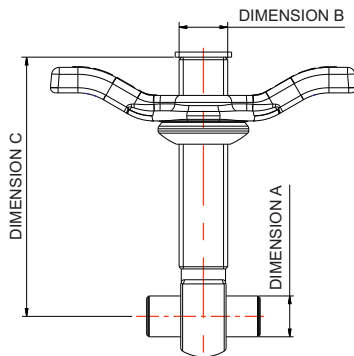
We supply a range of swingbolt assemblies with different eyebolt lengths and handnut types.

The standard sizes shown are the most frequently used. If the size you want is not shown, please contact us.

A complete swingbolt assembly includes the eyebolt, the pivot pin (attached with a grub screw) and the handnut with captivating washer. You can also buy all these components separately.

For Safebolt assemblies, please refer to data sheet SPA065 or contact us for more information.

### Standard Swingbolt Assemblies



### Specification

#### Eyebolt options

Ø eye: Dimension A - 16mm or 3/4"

Thread: Dimension B - 3/4" BSW

Length: Dimension C - from 49.3mm to 175.3mm

NOTE: Length is measured from the centre of the eye to the end of the bolt

Material: stainless steel

#### Standard handnut options

Low profile stainless steel

Low profile naval brass with stainless steel thrust washer

Extended stainless steel with anti-galling brass thread

#### Special handnut options

Extended stainless steel

Low profile stainless steel with anti-galling brass thread

Hexagonal stainless steel nut

### Range: Standard Swingbolt Assemblies

The sizes shown are the most frequently used. If the size you want is not shown, please contact us.

#### 16mm Eye Swingbolt Assemblies

Eyebolt Length (Dimension C)		Stainless Steel Handnut	Naval Brass Handnut	Anti-galling Extended Handnut
mm	inches			
62	2.44	496/5260	496/1260	-
66	2.60	496/5275	496/1275	496/C260
70	2.75	496/5290	496/1290	496/C275
83	3.26	496/5342	496/1342	-
87	3.42	496/5358	496/1358	496/C342
92	3.63	496/5379	496/1379	496/C379
95	3.75	496/5375	496/1375	496/C375
108	4.25	496/5425	496/1425	496/C425
133.4	5.25	496/5525	496/1525	496/C525

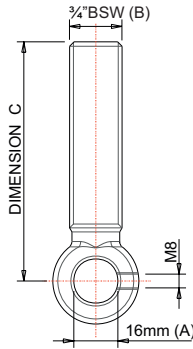
#### 3/4" Eye Swingbolt Assemblies

Eyebolt Length (Dimension C)		Stainless Steel Handnut	Naval Brass Handnut
mm	inches		
66	2.60	495/1005	495/1081
87	3.42	495/1015	495/1060
95	3.75	495/1059	495/1055
120.7	4.75	495/0210	-

### Related Parts

Description	Part No.
Handnut torque increase tool, compatible with low profile handnuts	495/10T0

### 16mm Eye (A) x 3/4" BSW Eyebolt (B)



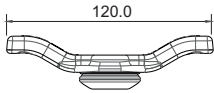
### Specification

Supplied as standard with an M8 grub screw  
 Length options (C): from 49.3mm to 175.3mm  
 Material: stainless steel  
 Other eye sizes and thread types are available, please contact us.

Eyebolt Length (Dimension C)		Part No.
mm	inches	
69.85	2.75	540/0275
75.95	2.99	540/0299
80.01	3.15	540/0315
95.25	3.75	540/0375

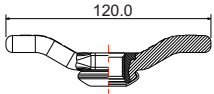
### 3/4" BSW Handnut

#### Standard low profile handnut

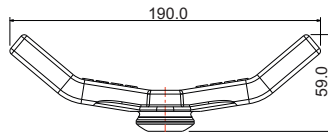


#### Anti-galling handnut

##### Low profile



##### Extended



#### Hexagonal nut



### Specification

Standard handnuts are low profile in stainless steel or naval brass.

Special handnuts include extended stainless steel and anti-galling in stainless steel with a brass thread insert. These are available low profile or extended.

For our flat bolted manlids, we also supply stainless steel hexagonal nuts.

Description	Material	Part No.
Low profile	Stainless steel	490/0310
Low profile	Naval brass with stainless steel thrust washer	490/1060
Extended	Stainless steel	490/0313
Anti-galling low profile	Stainless steel with brass thread insert	490/0380
Anti-galling extended	Stainless steel with brass thread insert	490/0410
Hexagonal nut	Stainless steel	490/1190

### Eyebolt Pivot Pin



### Specification

Standard Ø: 16mm or 3/4"  
 Material: stainless steel

Description	Part No.
Ø 16mm x 44.5mm long	10913SS
Ø 3/4" x 1.82" long	10911SS

### Related Parts

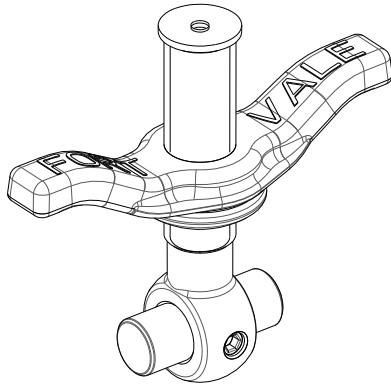
#### Manlid/Neckring Hinge Pin Assembly



### Specification

Includes the pin, washers and nyloc nuts  
 Material: stainless steel

Description	Part No.
Manlid/neckring hinge pin assembly	600/1060



Example: **4 9 6 / X X X X**

--	--	--	--	--	--

**496/ Specification**

16mm eye x 3/4"BSW swingbolt assembly, including eyebolt, hinge pin and captivated handnut.

**3/4" BSW Handnut Type**

Code	Description	Material
0	Hexagonal nut	Stainless steel
1	Low profile	Naval brass with stainless steel thrust washer
4	Safebolt	Stainless steel
5	Low profile	Stainless steel
8	Extended	Stainless steel
C	Extended anti-galling	Stainless steel with brass thread insert
E	Low profile anti-galling	Stainless steel with brass thread insert

**Eyebolt Length**

The code is equivalent to the working length of the bolt. This is calculated from the centre of the eye to the end of the bolt, given in inches.

e.g. **375** = 3.75" (95.25mm)

Eyebolts are available from 49.3mm (2.10") long to 175.3mm (6.90") long.

Refer to the Range tables on page 1 for standard sizes.