



## Specification

### Nominal size

50mm

### Tank connection

Flanged: 4 x 18mm holes on a 126mm PCD

### Outlet/Process connection

Flanged: 4 x 18mm slots on a 120 - 127mm PCD

### Properties

Left hand operated, handle with TIR

### Materials

Contact parts: PFA lined

Main seal: PTFE

Refer to Range for other PFA Lined Ball Valves

Alternatives are available, refer to the Design Options page

## Design Conditions

Weight:	9.76 Kg
Design Pressure (MAWP):	6.9 Bar
Test Pressure:	12.6 Bar
Design Temperature Min:	-40°C
Design Temperature Max:	200°C

**NOTE:** The Design Conditions and Section View dimensions are for the specified part number only.

### Design Codes

BS EN14432

RID

## Range

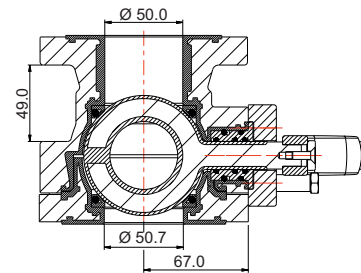
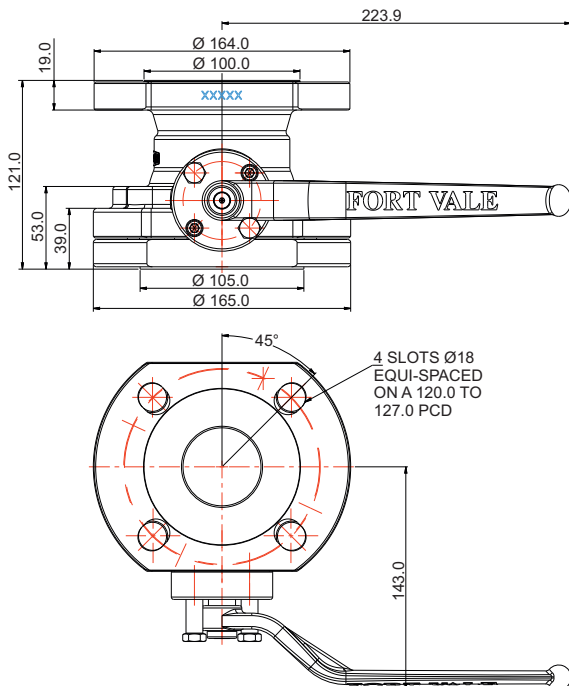
Description	Part No.
25mm reduced bore ball valve PFA lined	530/P100
50mm full bore ball valve PFA lined	370/P200
50mm ball valve PFA lined, painted body	370/P200PA
80mm full bore ball valve PFA lined	360/P030X *

\*The part number changes for left or right hand operated

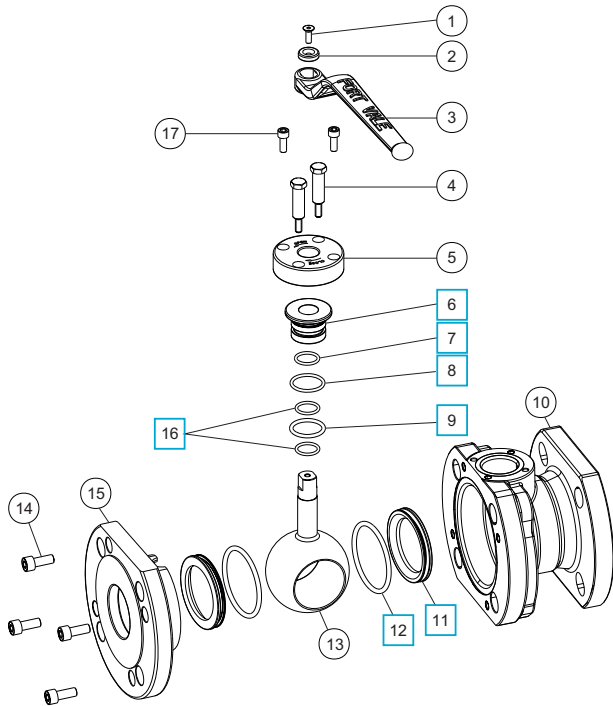
## Related Parts

Description	Part No.
Stud kit	311/3790
Bolting kit	311/3590
PFA lined blind flange	370/4239PFA

## Section View



## Parts Drawing



## Parts List

Item	Description	Part No.	
1	M5 screw	5111-113	
2	Retaining washer	20370/5	
3	Handle	370/3306/1	
4	Stop pin (2)	370/P107	
5	Stuffing plate	370/P114	
6	Seal carrier	370/P113	<input type="checkbox"/>
7	Viton O ring	ORB115VL	<input type="checkbox"/>
8	Viton O ring	ORB121VL	<input type="checkbox"/>
9	Perfluoroelastomer O ring	5005-214PER	<input type="checkbox"/>
10	PFA lined body	370/P110/2	
11	PTFE ball seal (2)	370/P115	<input type="checkbox"/>
12	Fortyt O ring (2)	ORM0580400F0	<input type="checkbox"/>
13	PFA lined spindle/ball	370/P101	
14	M8 cap screw (4)	5111-010	
15	PFA lined clamp plate	370/P111	
16	Perfluoroelastomer O ring (2)	5005-370P	<input type="checkbox"/>
17	M6 cap screw (2)	5111-015	

## Seal Kit

Description	Part No.
All parts marked <input type="checkbox"/> in the Parts List	370/P100SK