



Specification

Nominal size

50mm

Tank connection

Flanged: 4 x 10.9mm holes on a 100mm PCD

Outlet/Process connection

Threaded: 2" BSP male

Properties

1/4" BSP gauge connection, gauge guard, handle with TIR

Materials

Contact parts: 316 stainless steel

Main seal: PTFE

Alternatives are available, refer to the Design Options page

Design Conditions

Weight:	3.7 Kg
Design Pressure (MAWP):	6.9 Bar
Test Pressure:	12.5 Bar
Design Temperature Min:	-40°C
Design Temperature Max:	190°C

NOTE: The Design Conditions and Section View dimensions are for the specified part number only.

Design Code

BS EN14432

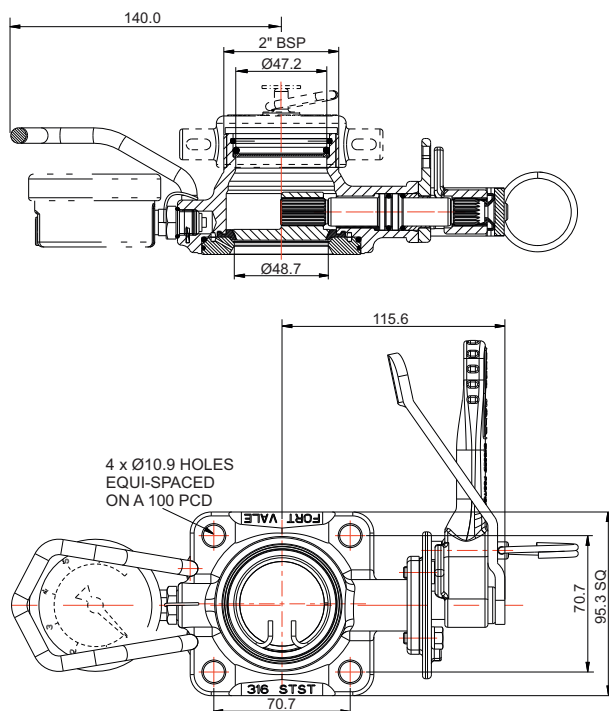
Range

Description	Part No.
Standard specification	535/0200
With gauze filter	535/0200F
With sintered filter	535/0200S

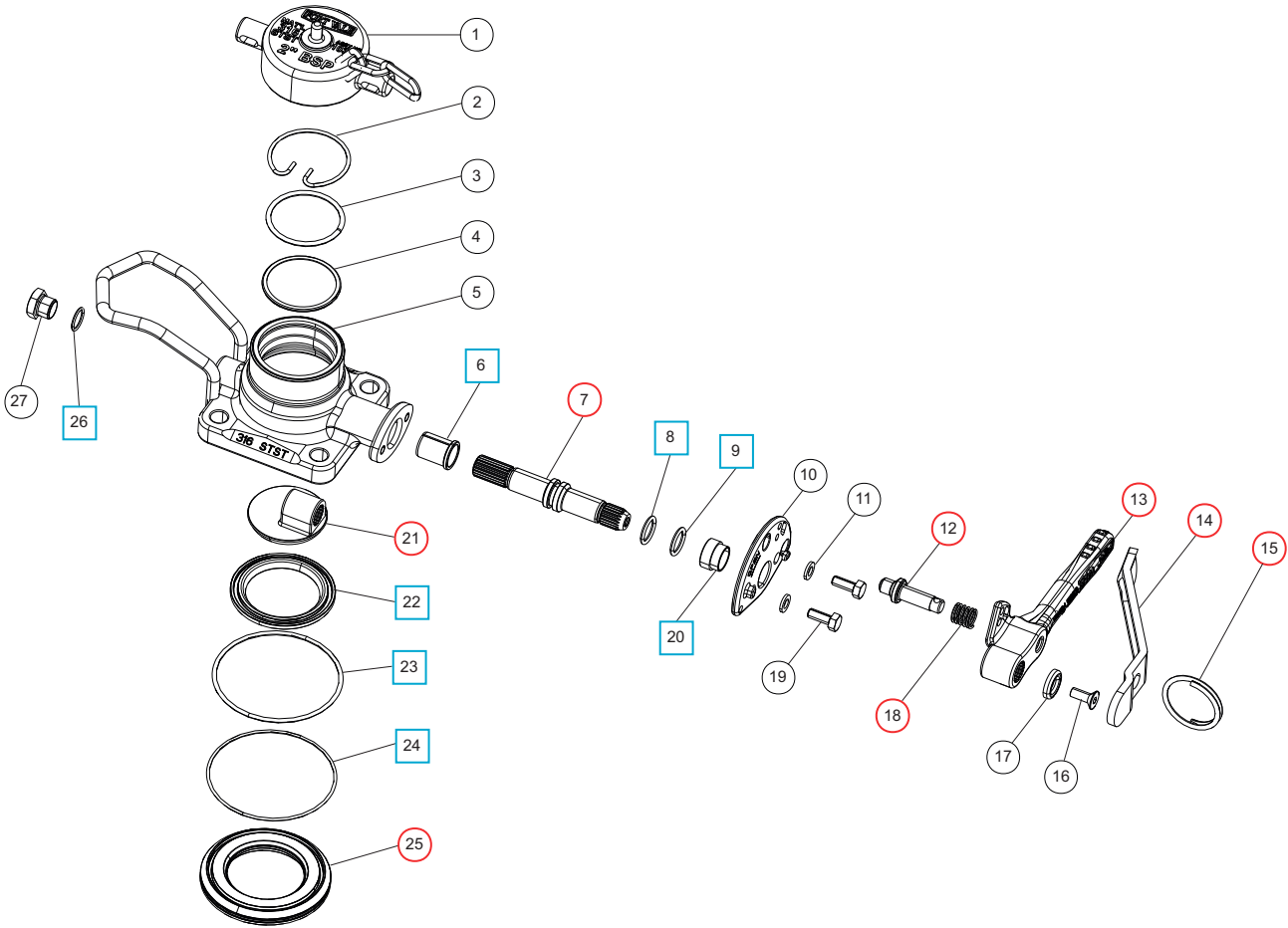
Related Parts

Description	Part No.
Dust cap	10301PS
Pressure gauge	920/07BBSP
Gauge adaptor	352/4004
Stud kit	350/1300
Gasket	5005-500
Tank weld-in flange	355/1000

Section View



Parts Drawing



Parts List

Item	Description	Part No.
1	2" BSP dust cap (supplied separately)	10301PS
2	Snap ring * Note 1 & 2	5120-005
3	Spacer * Note 1 & 2	355/0295
4	Gauze filter * Note 1 Sintered filter (2) * Note 2	355/0010 355/0206
5	Body	535/0215
6	PTFE bush	535/0009 <input type="checkbox"/> <input type="radio"/>
7	Spindle	535/0203 <input type="radio"/>
8	Viton O ring	20361 <input type="checkbox"/> <input type="radio"/>
9	PTFE O ring	20363 <input type="checkbox"/> <input type="radio"/>
10	Stuffing clamp	535/0204
11	Spring washer (2)	5113-008
12	Handle location pin	368/0010 <input type="radio"/>
13	Handle	535/0050 <input type="radio"/>
14	Operating lever	368/9838 <input type="radio"/>
15	Split ring	368/0011 <input type="radio"/>
16	Countersunk bolt	5111-030
17	Retaining washer	20370
18	Handle spring	368/0012 <input type="radio"/>

Parts List

Item	Description	Part No.
19	Hex bolt (2)	5111-022
20	PTFE stuffing clamp bush	368/0301 <input type="checkbox"/> <input type="radio"/>
21	Closure plate	535/0225 <input type="radio"/>
22	PTFE main seal	355/0202 <input type="checkbox"/> <input type="radio"/>
23	PTFE O ring	5005-659 <input type="checkbox"/> <input type="radio"/>
24	EPDM O ring	5005-664 <input type="checkbox"/> <input type="radio"/>
25	Clamp plate	535/0201 <input type="radio"/>
26	PTFE O ring	5005-048 <input type="checkbox"/> <input type="radio"/>
27	1/4" BSP plug	5128-005

NOTE 1: Optional part, see Range 535/0200F

NOTE 2: Optional part, see Range 535/0200S

Seal Kit

Description	Part No.
All parts marked <input type="checkbox"/> in the Parts List	535/00SK

Repair Kit

Description	Part No.
All parts marked <input type="radio"/> in the Parts List	535/00RK