



Flanged 65mm NB Super Maxi Relief Valve - slotted flange tank connection suitable for a 145 min. PCD to 152.4 max. PCD to suit DIN65 PN10, 3" BSTD & 3"ASA 150 hole patterns. Suitable for a pressure range of between 2 to 70 PSI (0.14 to 4.83 Bar) and a vacuum setting of between 0.5"Hg to 24"Hg (0.02 to 0.81 Bar). Contact parts manufactured in 316 stainless steel with Fortyt seals as standard.

Options - pressure only version. 80mm nominal bore range. BSP range. High pressure extended body valves. Tapered Bore version. Alternative seal materials are available. Additional flange drillings are available.

Specification

Weight 6.94 Kg *Varies
Temperature Range Dependant upon seal material

Design Approval by Lloyds Register of Shipping.

Tests may be witnessed and valves individually stamped by an independent inspectorate by arrangement.

Test certificates are supplied as standard.

Valve flow rates are available by request.

*** Fitting ancillary items in the flow stream will alter the valve flow rate.**

Range

Part No.	Description
013/1XXXX6SL	65mm NB flanged Super Maxi valve

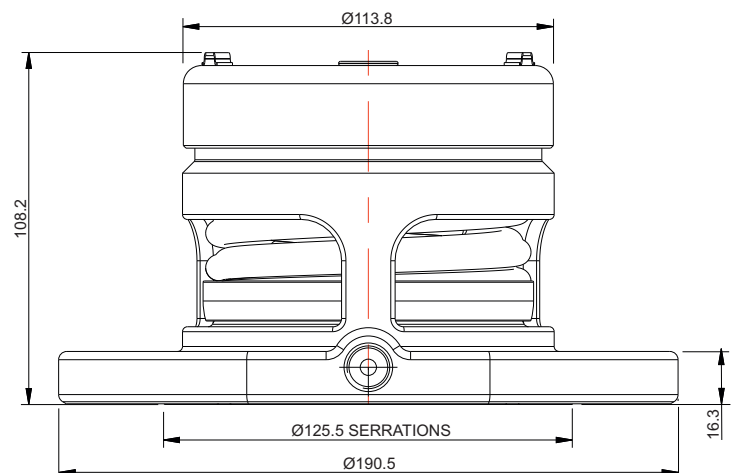
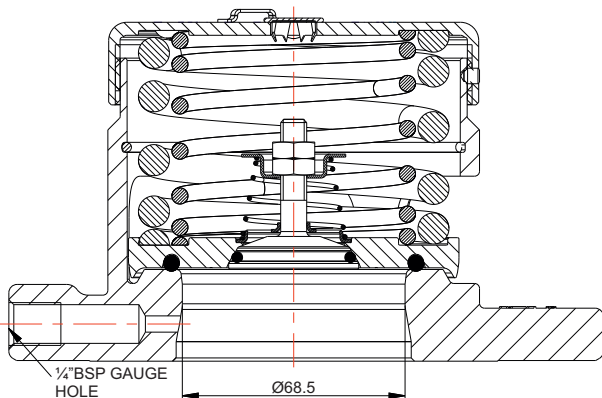
NOTE: The above part number varies according to the valve pressure and vacuum settings.

Associated Parts

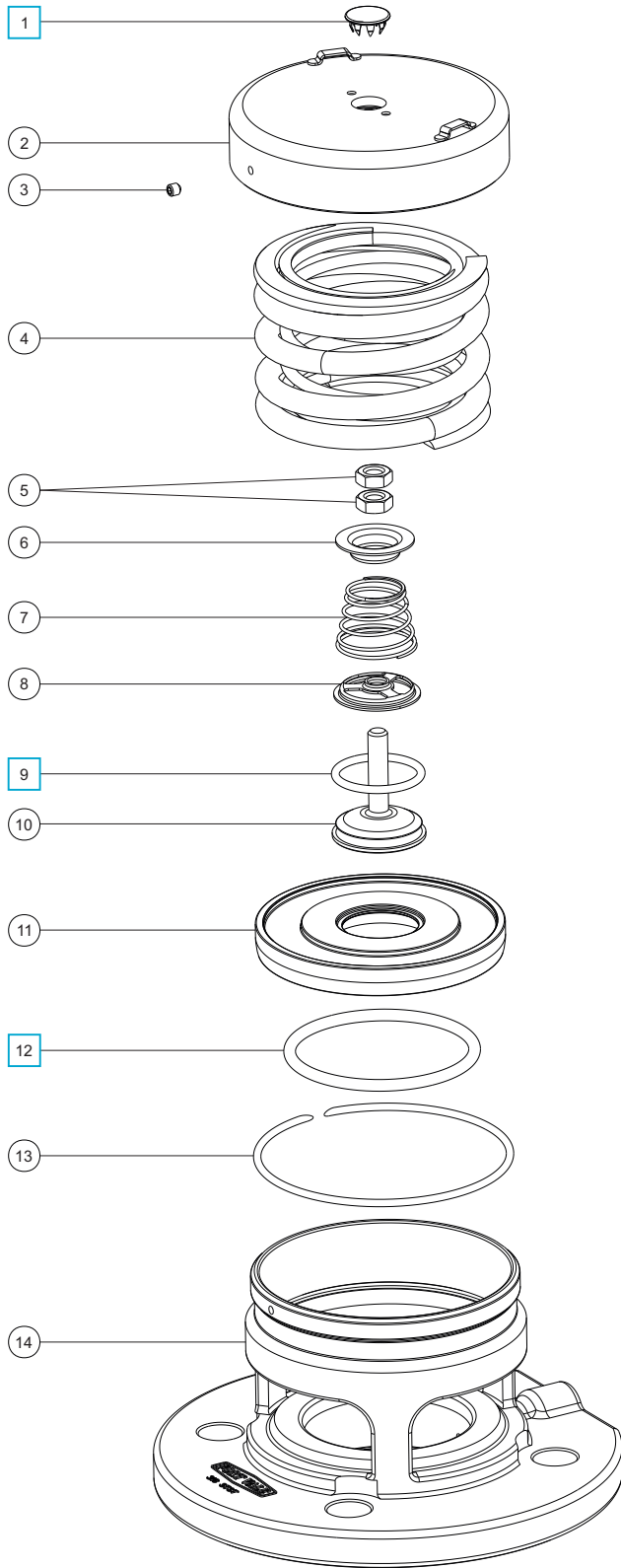
Part No.	Description
921/07BBSP	0-100 PSI pressure gauge, bottom entry, brass internal parts
921/07RBSP	0-100 PSI pressure gauge, rear entry, brass internal parts
920/07BBSP	0-100 PSI pressure gauge, bottom entry, stainless steel internal parts
176/2900 *	Removable clamped gauze
862/XXXX *	65mm bursting disc
311/3700	Stud kit (4 x M16)

Fitting Details

Example shown : 013/1XXXX6SL



Parts Drawing



Item	Description	Part No.
1	Stainless steel plug	10978 <input type="checkbox"/>
2	Cap	1760/0005XX
3	Setting locking grub screw	5121-001
4	Pressure spring pair *See Table 1	6104-XXXX
5	M8 nut (2)	5112-004
6	Vacuum spring pad	1860/0005
7	Vacuum spring *See Table 2	7104-XXX
8	Spring pad	10986/3
9	Fortyt vacuum O ring	5005-108H <input type="checkbox"/>
10	Vacuum poppet	10983V/3
11	Pressure plate *See Note	1860/005XXX
12	Fortyt pressure O ring	5005-101 <input type="checkbox"/>
13	Retaining ring clip	5120-067
14	Body	1860/06SL

NOTE : Part number varies according to specification.

SEAL KIT

Part number **000/1PVSK** contains all parts marked

TABLE 1

Common Pressure Settings	Pressure Springs Part No.
31.8 PSI (2.19 Bar)	6104-0252
48.0 PSI (3.31 Bar)	6104-0112 & 6104-0252
53.8 PSI (3.71 Bar)	6104-0422 (Pair)
63.8 PSI (4.40 Bar)	6104-0485 (Pair)

TABLE 2

Common Vacuum Settings	Vacuum Spring Part No.
3"Hg (-0.10 Bar)	7104-006
6"Hg (-0.20 Bar)	7104-012

Visual inspection and service (where necessary) is recommended regularly. A detailed step-by-step repair manual is available for our Super Maxi Relief Valves. Please contact our Sales team for further information.



Flanged 65mm NB Super Maxi Relief Valve - slotted flange tank connection suitable for a 145 min. PCD to 152.4 max. PCD to suit DIN65 PN10, 3" BSTD & 3"ASA 150 hole patterns. Suitable for a pressure range of between 2 to 70 PSI (0.14 to 4.83 Bar). Contact parts manufactured in 316 stainless steel with a Fortyt seal as standard.

Options - combined pressure/vacuum version. 80mm nominal bore range. BSP threaded range. High pressure extended body valves. Tapered Bore version. Lined version for corrosive cargoes. Alternative seal materials are available. Additional flange drillings are available.

Specification

Weight 5.84 Kg *Varies
Temperature Range Dependant upon seal material

Design Approval by Lloyds Register of Shipping.

Tests may be witnessed and valves individually stamped by an independent inspectorate by arrangement.

Test certificates are supplied as standard.

Valve flow rates are available by request.

*** Fitting ancillary items in the flow stream will alter the valve flow rate.**

Range

Part No.	Description
013/1XX006SL	65mm NB flanged Super Maxi valve

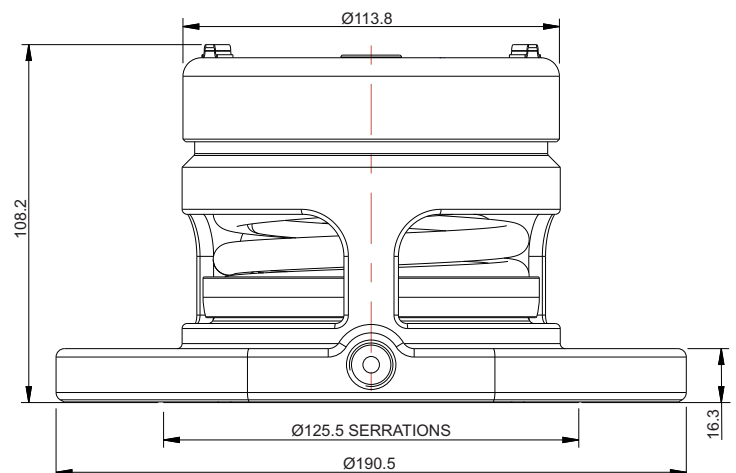
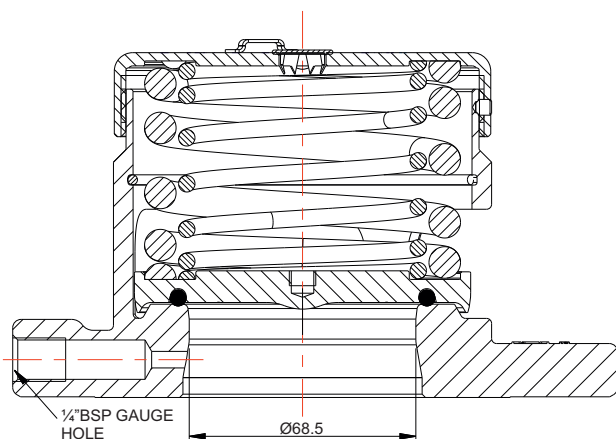
NOTE: The above part number varies according to the valve pressure setting.

Associated Parts

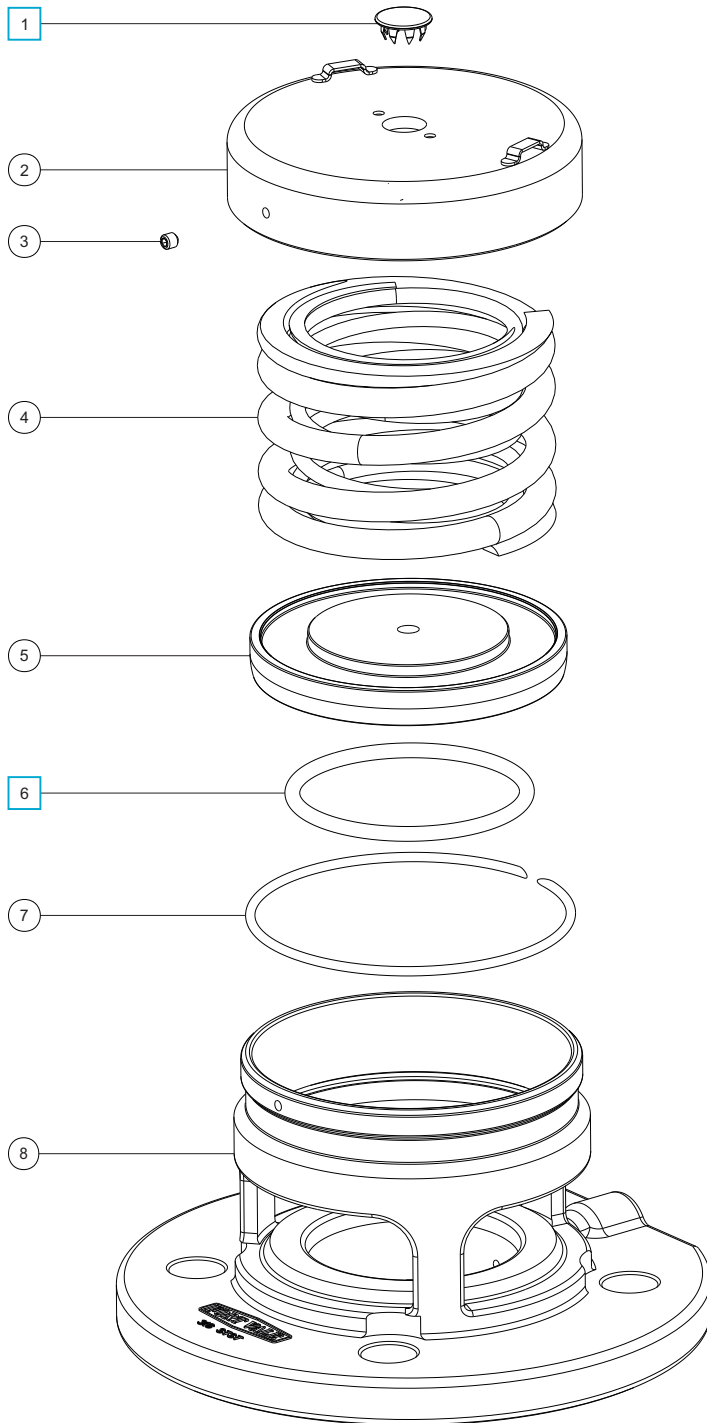
Part No.	Description
921/07BBSP	0-100 PSI pressure gauge, bottom entry, brass internal parts
921/07RBSP	0-100 PSI pressure gauge, rear entry, brass internal parts
920/07BBSP	0-100 PSI pressure gauge, bottom entry, stainless steel internal parts
176/2900 *	Removable clamped gauze
862/XXXX *	65mm bursting disc
311/3700	Stud kit (4 x M16)

Fitting Details

Example shown : 013/1XX006SL



Parts Drawing



Item	Description	Part No.
1	Stainless steel plug	10978 <input type="checkbox"/>
2	Cap *See Note	1760/0005XX
3	Setting locking grub screw	5121-001
4	Pressure spring pair *See Table 1	6104-XXXX
5	Fortyt pressure plate *See Note	1860/005XXX
6	Fortyt pressure O ring	5005-101 <input type="checkbox"/>
7	Retaining ring clip	5120-067
8	Body	1860/06SL

NOTE : Part number varies according to specification.

SEAL KIT

Part number 000/1PSK contains all parts marked

TABLE 1

Common Pressure Settings	Pressure Spring Part No.
31.8 PSI (2.19 Bar)	6104-0252
48.0 PSI (3.31 Bar)	6104-0112 & 6104-0252
53.8 PSI (3.71 Bar)	6104-0422 (Pair)
63.8 PSI (4.40 Bar)	6104-0485 (Pair)

Visual inspection and service (where necessary) is recommended regularly. A detailed step-by-step repair manual is available for our Super Maxi Relief Valves. Please contact our Sales team for further information.