



Extended Body Flanged Tapered Bore Super Maxi Relief Valve - flanged tank connection with 69.2 - 82.6mm tapered bore (see below for flange options). Suitable for a pressure range of between 66 - 204 PSI (4.55 - 14.07 Bar). Contact parts manufactured in 316 stainless steel. Fitted with reinforced Fortyt seals as standard.

Options - combined pressure/vacuum version. 65mm and 80mm nominal bore range. Alternative seal materials are available. Additional flange drillings are available

## Specification

Weight 7.43 Kg \*Varies  
Temperature Range Dependant upon seal material

Design Approval by Lloyds Register of Shipping.

Tests may be witnessed and valves individually stamped by an independent inspectorate by arrangement.

Test certificates are supplied as standard.

Valve flow rates are available by request.

**\* Fitting ancillary items in the flow stream will alter the valve flow rate.**

## Range

Part No.	Description
019/1XXX66X	Extended body flanged tapered bore Super Maxi valve

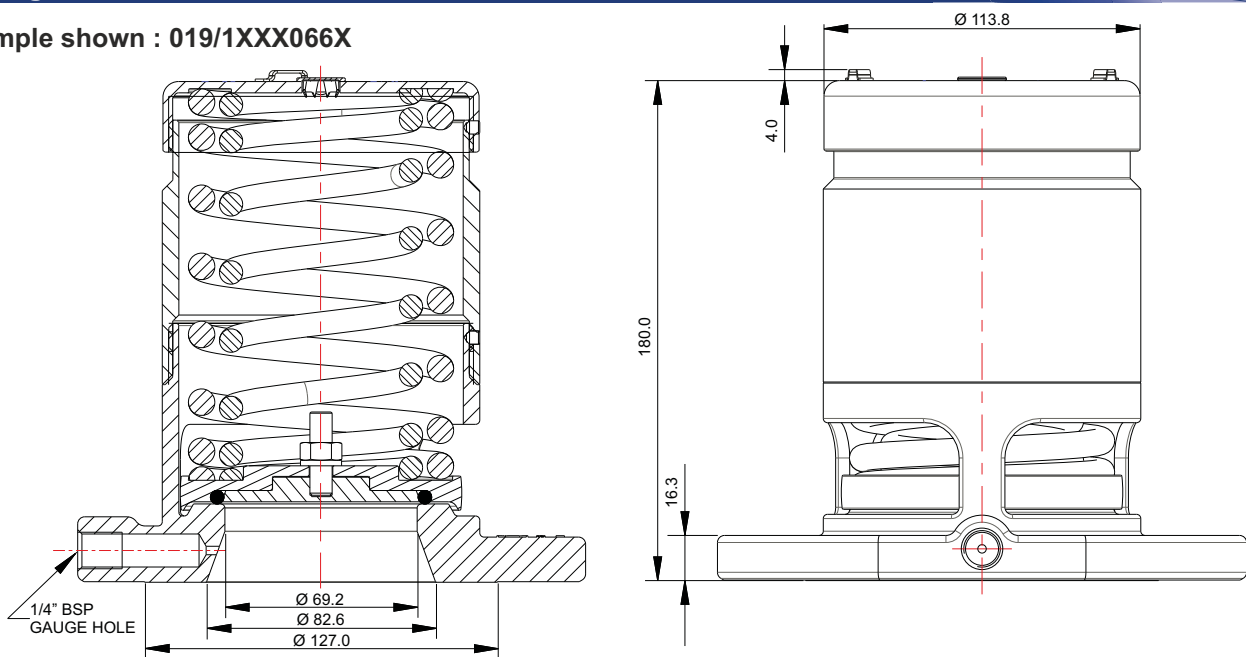
**NB** Above part number varies according to valve pressure and vacuum settings.

## Associated Parts

Part No.	Description
920/20BBSP	0-200 PSI pressure gauge, bottom entry, stainless steel internal parts
921/20BBSP	0-200 PSI pressure gauge, bottom entry, brass internal parts
921/07RBSP	0-100 PSI pressure gauge, rear entry, brass internal parts
176/2900 *	Removable clamped gauze
864/XXXX *	80mm bursting disc
311/3700	Stud kit (4 x M16)

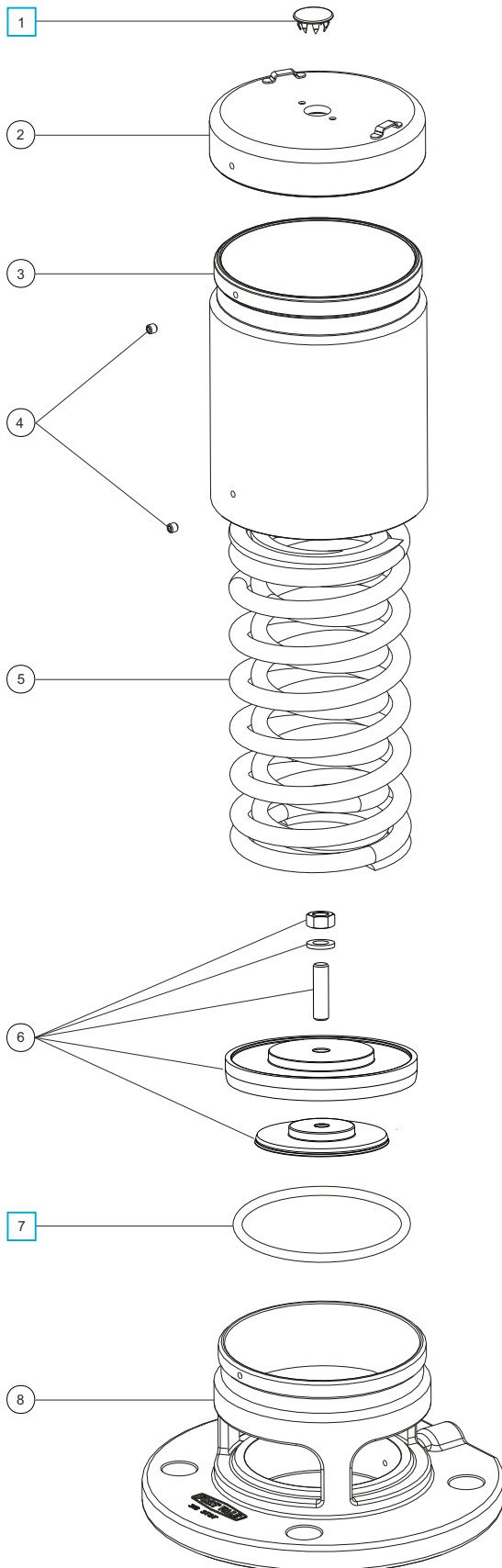
## Fitting Details

Example shown : 019/1XXX066X



Part Number	Flange Drilling Pattern			Flange Spec.	Tank Weld in Pad	Gasket
	No. of Holes	Ø (mm) (equi-spaced)	PCD (mm)			
019/1XXX0660	4	18	145.0	DIN 65 PN10	176/3245	5005-892
019/1XXX0661	4	18	150.0	DIN 80 PN6	176/3158	5005-334
019/1XXX0663	4	18	146.1	3" BSTD	176/3140	5005-397
019/1XXX0665	4	18	152.4	3" ASA 150	176/3125	5005-204

Parts Drawing



Item	Description	Part No.
1	Stainless steel plug	10978 <input type="checkbox"/>
2	Top cap	1760/0005
3	Extension tube	1860/0035
4	Setting locking grub screw (2)	5121-001
5	Pressure spring pair *See Table 1	6104-XXXX
6	Pressure plate *See Note	1860/00XX
7	Pressure O ring *See Note	5005-XXX <input type="checkbox"/>
8	Body *See Table 2	1860/066X

**NOTE :** Part number varies according to specification.

**SEAL KIT**

Part number **018/XPSK** contains all parts marked  'X' in part number indicates variable seal material. Please contact Sales for correct seal kit part number.

**TABLE 1**

Common Pressure Settings	Pressure Spring Part No.
100 PSI (6.89 Bar)	6104-0763
106 PSI (7.31 Bar)	6104-0840
110 PSI (7.58 Bar)	6104-0840

**TABLE 2**

Part No.	Drilling	Body
019/1XXX0660	DIN65 PN10	1860/0660
019/1XXX0661	DIN80 PN6	1860/0661
019/1XXX0663	3" BSTD	1860/0663
019/1XXX0665	3" ASA150	1860/0665

Visual inspection and service (where necessary) is recommended regularly. A detailed step-by-step repair manual is available for our Super Maxi Relief Valves. Please contact our Sales team for further information.