



2½" BSP Super Maxi Relief Valve with Manual Vent Button - 2½" BSP male connection with 65mm nominal bore. Suitable for a pressure range of between 2 - 75 PSI (0.14 - 5.17 Bar) and a vacuum range of between 0 - 24"Hg (0 - 0.81 Bar). Contact parts manufactured in 316 stainless steel. Fitted with Fortyt seals as standard. Complete with rubber/PTFE tank seal.

Options - Alternative seal materials are available. Cable vacuum actuator linkage available to clamp to vent button for remote operation.

Specification

Weight 2.98 Kg *Varies
 Temperature Range Dependant upon seal material

Design Approval by Lloyds Register of Shipping.

Tests may be witnessed and valves individually stamped by an independent inspectorate by arrangement.

Test certificates are supplied as standard.

Valve flow rates are available by request.

*** Fitting ancillary items in the flow stream will alter the valve flow rate.**

Range

Part No.	Pressure	Vacuum
01B/13212	31.8 PSI (2.19 Bar)	6.2" Hg (-0.21 Bar)
01B/14812	48.0 PSI (3.31 Bar)	6.2" Hg (-0.21 Bar)
01B/15412	53.8 PSI (3.71 Bar)	6.2" Hg (-0.21 Bar)
01B/16312	63.8 PSI (4.40 Bar)	6.2" Hg (-0.21 Bar)

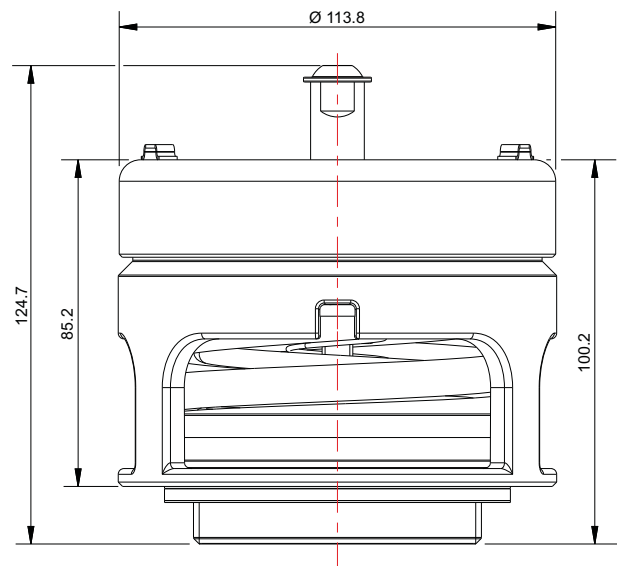
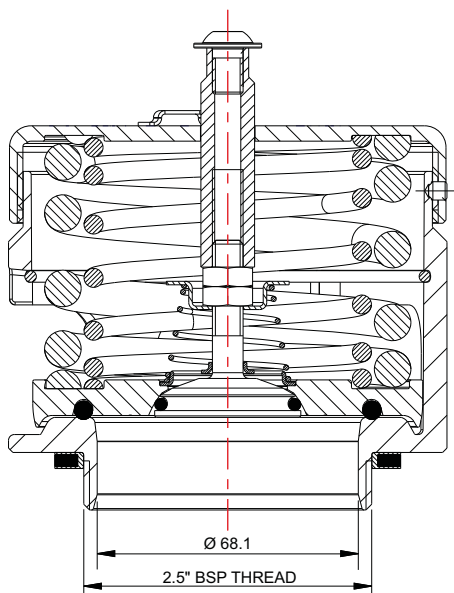
NB Above part numbers vary according to valve pressure and vacuum settings. These are standard settings.

Associated Parts

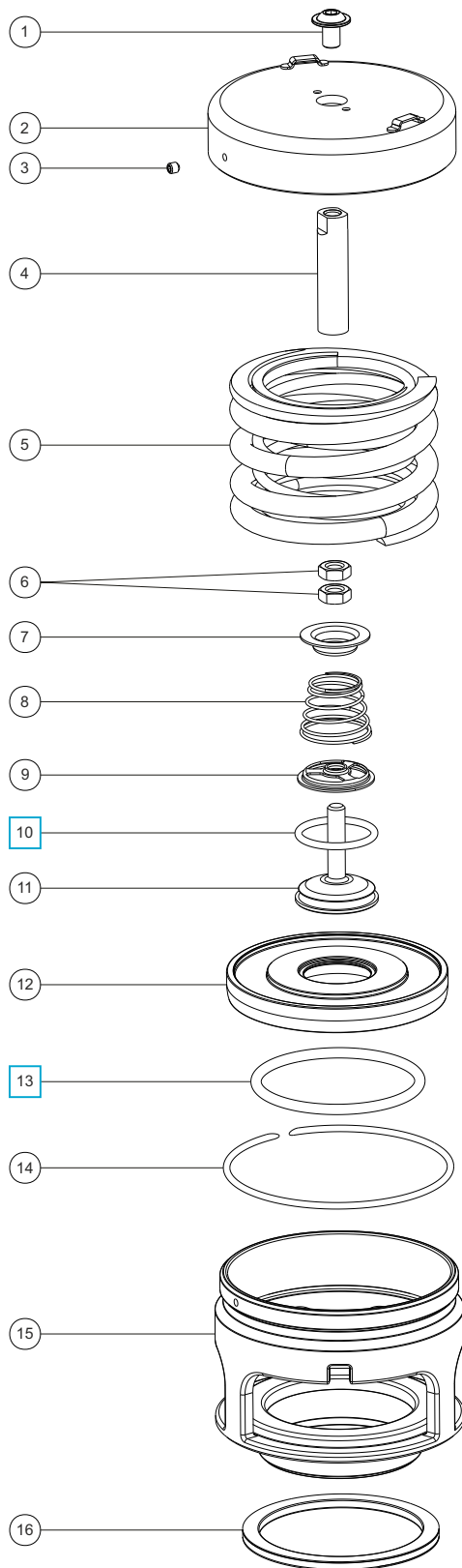
Part No.	Description
600/1000	2½" BSP weld-in socket
176/3150	Tank weld-in pad
5005-398	CNAF/PTFE gasket to suit weld-in pad / adaptor flange
921/07BBSP	0-100 PSI pressure gauge, bottom entry, brass internal parts
921/07RBSP	0-100 PSI pressure gauge, rear entry, brass internal parts
920/07BBSP	0-100 PSI pressure gauge, bottom entry, stainless steel internal parts
176/2900 *	Removable clamped gauze
176/6000 *	Gauzed cowl
1860/0400	Cable vacuum actuator

Fitting Details

Example shown : 01B/1XXXX



Parts drawing



Item	Description	Part No.
1	Flanged button screw	5111-9812
2	Cap	1760/0005
3	Setting locking grub screw	5121-001
4	Stem extension	1860/0070
5	Pressure spring pair *See Table 1	6104-XXXX
6	M8 locknut (2)	5112-004
7	Vacuum spring pad	1860/0005
8	6" Vacuum spring	7104-012
9	Spring pad	10986/3
10	Fortyt vacuum O ring	5005-108H <input type="checkbox"/>
11	Vacuum poppet	10983V/3
12	Pressure plate *See Note	1860/005XXX
13	Fortyt pressure O ring	5005-101 <input type="checkbox"/>
14	Retaining ring clip	5120-067
15	Body assembly	1860/0100
16	Rubber/PTFE envelope seal	5005-046

NOTE : Part number varies according to specification.

SEAL KIT

Part number **000/1PVSK** contains all parts marked

TABLE 1

Common Pressure Settings	Pressure Springs Part No.
31.8 PSI (2.19 Bar)	6104-0252
48.0 PSI (3.31 Bar)	6104-0112 & 6104-0252
53.8 PSI (3.71 Bar)	6104-0422 (Pair)
63.8 PSI (4.40 Bar)	6104-0485 (Pair)

Visual inspection and service (where necessary) is recommended regularly. A detailed step-by-step repair manual is available for our Super Maxi Relief Valves. Please contact our Sales team for further information.