



2½" BSP Super Maxi Emergency Relief Valve - 2½" BSP male connection with 65mm nominal bore. Suitable for a pressure range of between 2 - 75 PSI (0.14 - 5.17 Bar) and a vacuum range of between 0 - 26" Hg (0 - 0.88 Bar). Contact parts manufactured in 316 stainless steel. Fitted with Fortyt seals as standard. Complete with rubber/PTFE tank seal.

Options - pressure only version. Flanged connections available. Range of high pressure extended body valves. Manual vent button option. A range of alternative seal materials is available.

Specification

Weight 4.08 Kg *Varies
 Temperature Range Dependant upon seal material

Design Approval by Lloyds Register of Shipping.

Tests may be witnessed and valves individually stamped by an independent inspectorate by arrangement.

Test certificates are supplied as standard.

Valve flow rates are available by request.

*** Fitting ancillary items in the flow stream will alter the valve flow rate.**

Range

Part No.	Common Valve Configurations
010/13212	31.8 PSI (2.19 Bar) & 6.2" Hg (-0.21 Bar)
010/14812	48.0 PSI (3.31 Bar) & 6.2" Hg (-0.21 Bar)
010/15412	53.8 PSI (3.71 Bar) & 6.2" Hg (-0.21 Bar)
010/16312	63.8 PSI (4.40 Bar) & 6.2" Hg (-0.21 Bar)

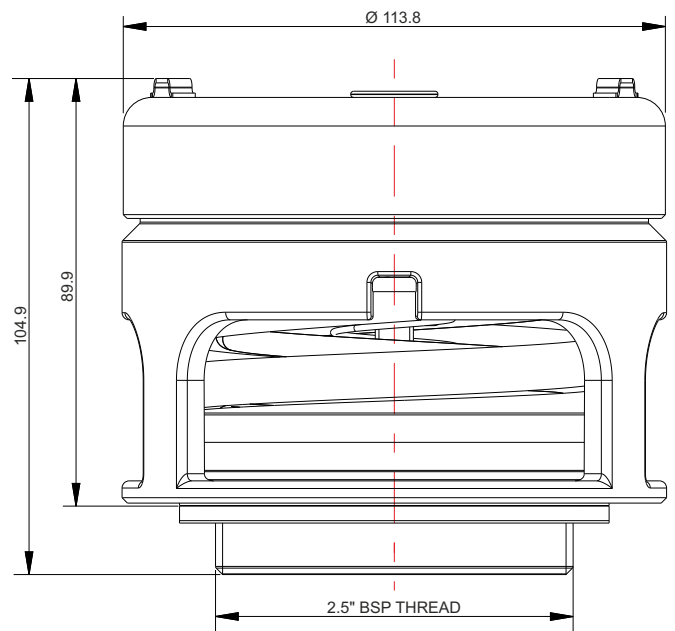
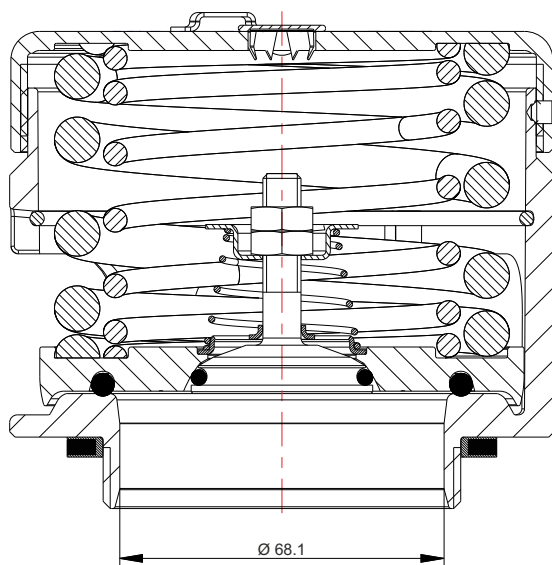
NB Above part number varies according to valve pressure and vacuum settings. These are standard settings.

Associated Parts

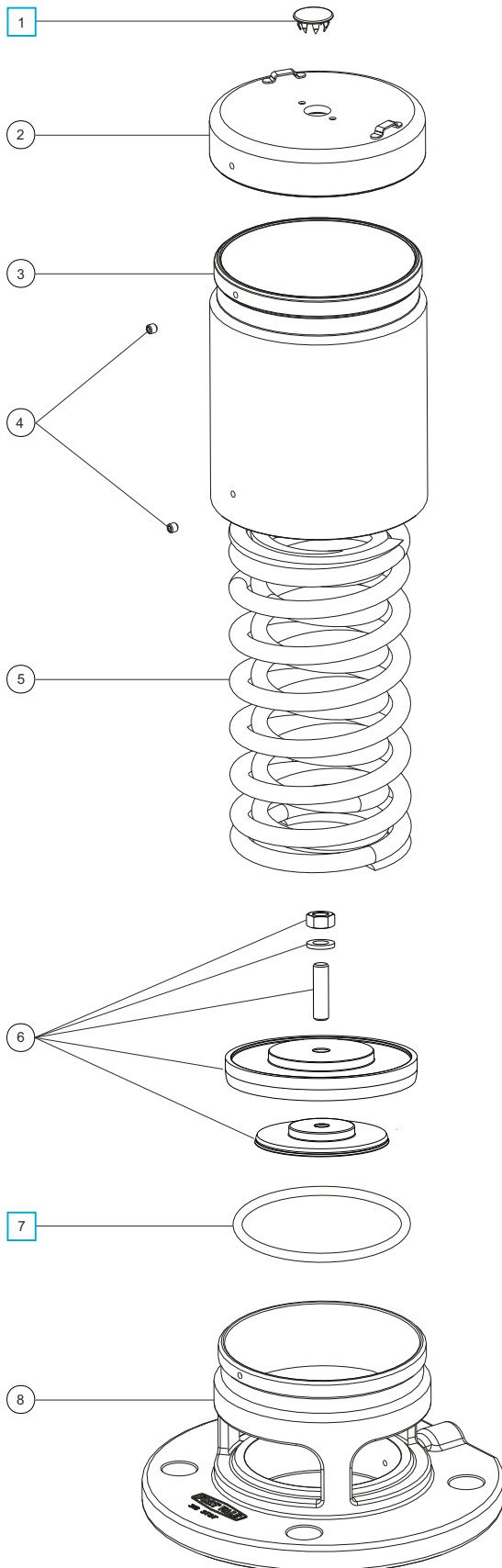
Part No.	Associated Parts
600/1000	2½" BSP weld-in socket
176/3150	Tank weld-in pad
5005-398	CNAF/PTFE gasket to suit weld-in pad/adaptor flange
921/07BBSP	0-100 PSI pressure gauge, bottom entry, brass internal parts
921/07RBSP	0-100 PSI pressure gauge, rear entry, brass internal parts
920/07BBSP	0-100 PSI pressure gauge, bottom entry, stainless steel internal parts
176/2900 *	Removable flameproof gauze
176/6000 *	Gauzed cowl

Fitting Details

Example shown : 010/1XXXX



Parts Drawing



Item	Description	Part No.
1	Stainless steel plug	10978 <input type="checkbox"/>
2	Top cap	1760/0005
3	Extension tube	1860/0035
4	Setting locking grub screw (2)	5121-001
5	Pressure spring pair *See Table 1	6104-XXXX
6	Pressure plate *See Note	1860/00XX
7	Pressure O ring *See Note	5005-XXX <input type="checkbox"/>
8	Body *See Table 2	1860/066X

NOTE : Part number varies according to specification.

SEAL KIT

Part number **018/XPSK** contains all parts marked 'X' in part number indicates variable seal material. Please contact Sales for correct seal kit part number.

TABLE 1

Common Pressure Settings	Pressure Spring Part No.
100 PSI (6.89 Bar)	6104-0763
106 PSI (7.31 Bar)	6104-0840
110 PSI (7.58 Bar)	6104-0840

TABLE 2

Part No.	Drilling	Body
019/1XXX0660	DIN65 PN10	1860/0660
019/1XXX0661	DIN80 PN6	1860/0661
019/1XXX0663	3" BSTD	1860/0663
019/1XXX0665	3" ASA150	1860/0665

Visual inspection and service (where necessary) is recommended regularly. A detailed step-by-step repair manual is available for our Super Maxi Relief Valves. Please contact our Sales team for further information.