



3" 45° Highlift footvalve to 2" Ball valve assembly - 8 hole inlet footvalve with replaceable seat, reducing to a 2" fire-safe designed ball valve terminating in a 2" BSP outlet spigot and fitted with a 2"BSP cap. The assembly incorporates a 90° sampling point with a ¼" ball valve fitted with a nipple adaptor and ¼"BSP cap. Contact parts manufactured in 316 stainless steel with Fortyt seal to the footvalve and PTFE seals to the ball valve.

Options - Various footvalve seat material options (see Range). Left or right handed ball valve. Available terminated with 2" dry disconnect coupling and cap. Version without replaceable seat.

Specification

Weight	15.1 Kg
Design Pressure (MAWP)	4 Bar (58 PSIG)
Test Pressure	6 Bar (87 PSIG)
Design Temperature range	-40°C to +200°C (-40°F to +392°F)

Specifically designed to fit hazardous cargo tanks for the Offshore Industry, this compact integral design offers several cost-effective advantages over the composite discharge assembly:

- ! shorter in overall length
- ! less weight, increasing tank tare weight
- ! potential leak path eliminated
- ! requires less spare parts, including external gaskets

To ensure that the tank remains sealed in the event of an accident, the Highlift footvalve body incorporates a shear groove, designed to fail in such a way as to leave the internal part of the valve closed and attached to the tank body.

Range

Part No.	Description
804/0085LXA	Assembly with left hand ballvalve
804/0085RXA	Assembly with right hand ballvalve

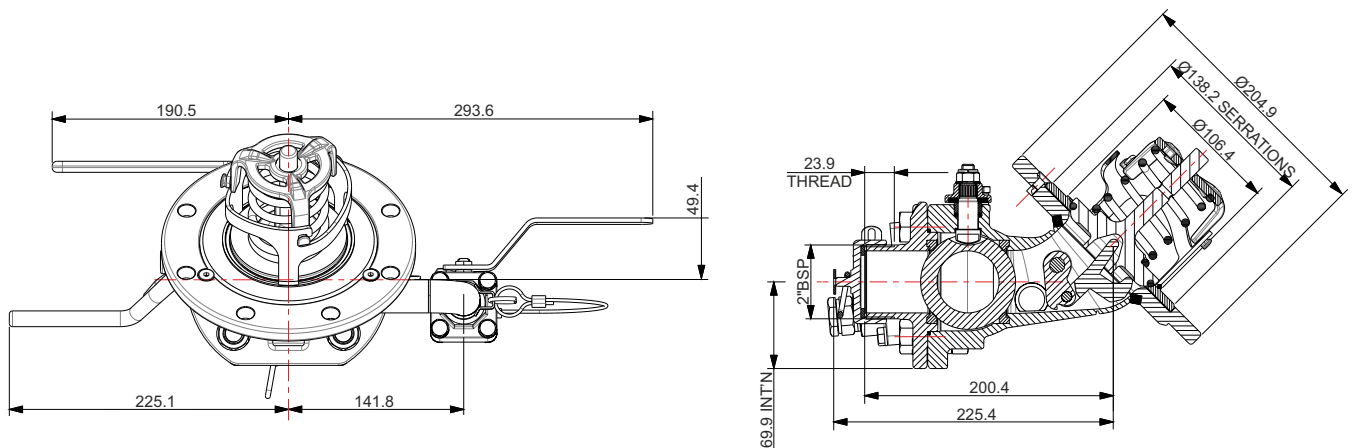
Part No.	Sealing face material to footvalve
804/0085XHA	Alloy C276
804/0085XSA	316 Stainless steel
804/0085XTA	Titanium GR2
804/0085XUA	904L Stainless steel

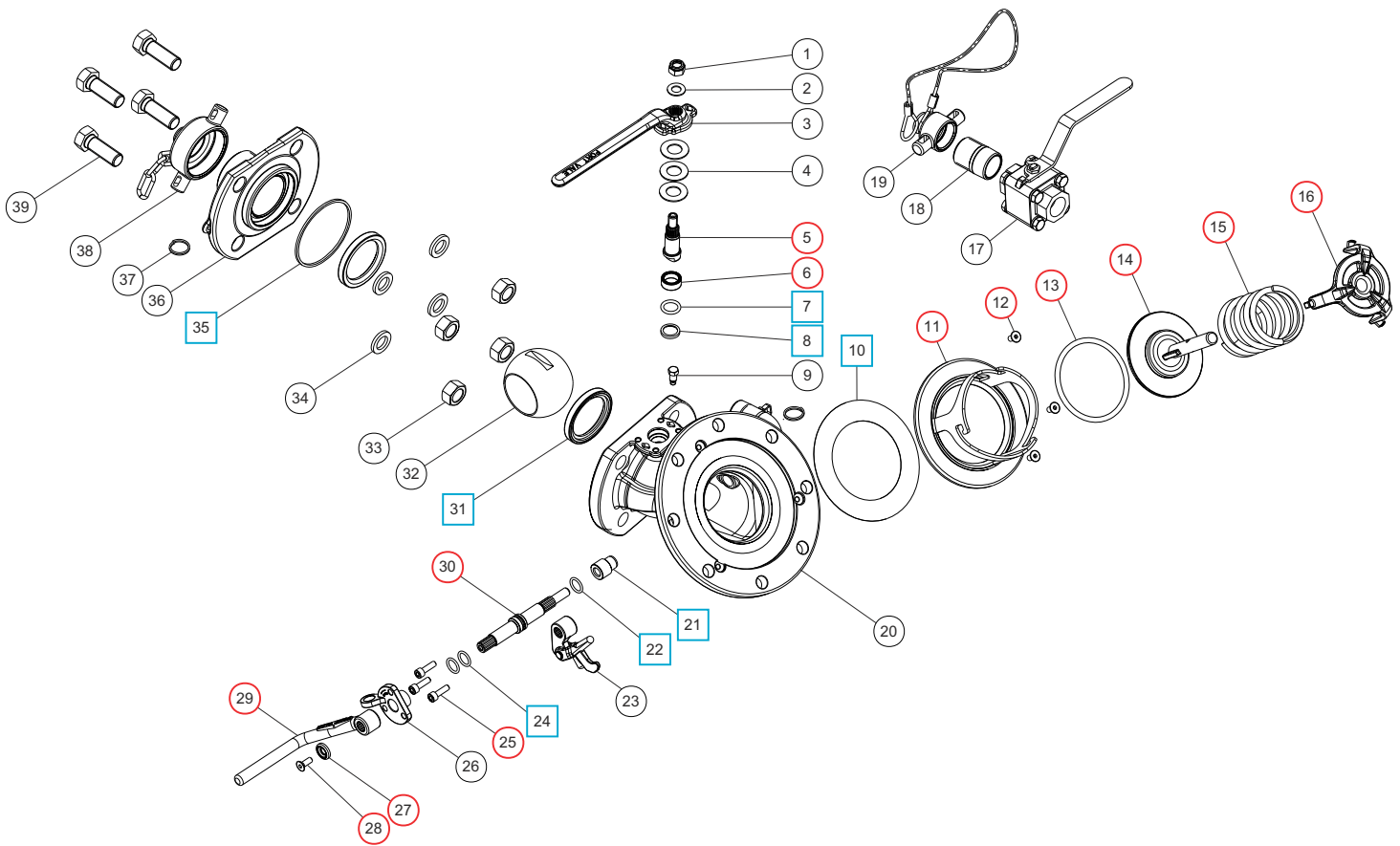
Associated Parts

Part Number	Description
324/9000	Tank weld-in pad
5005-015	CAF/PTFE gasket
324/2060	Stud kit

Fitting Details

Example shown : 804/0085XXA



Parts Drawing


Item	Description	Part No.
1	M10 self locking nut	5112-008
2	M10 washer	5113-009
3	Handle	370/0125
4	Belleville washer (3)	5113-038
5	2" ball valve spindle	370/0120 ●
6	Stuffing collar	370/0103 ●
7	PTFE O Ring	5005-688 ● □
8	Bottom bearing	370/0104 ● □
9	Stop pin	370/0107
10	PTFE wafer gasket *See Note 1	5005-828
11	Seal flange assembly *See Note 2	826/0817X
12	6mm x 12mm csk bolt (3) *Note 2	5111-018
13	Fortyt O Ring	5005-104 ● □
14	Footvalve solid poppet	324/2020 ●
15	Footvalve spring	5104-971 ●
16	Spring top plate	290/6104 ●
17	¾" Firesafe ball valve	410/500F
18	¾" nipple	338/1304
19	¾" BSP cap with wire	10306PSW
20	45° footvalve body	826/1176316

Item	Description	Part No.
21	Crankshaft end bush	20362 ● □
22	PTFE O ring (2)	20363 ● □
23	Crank block assembly	821/0300
24	Viton O ring	20361 ● □
25	M6 cap screw (3)	5111-017 ●
26	Stuffing clamp	324/1001
27	Retaining washer	20370 ●
28	M6 countersunk set screw	5111-030 ●
29	Footvalve handle	330/5010 ●
30	Spindle	821/0010 ●
31	PTFE ball seal (2)	370/0102 ● □
32	50mm ball	370/3301
33	M16 full nut (4)	5112-003
34	M16 spring washer (4)	5113-012
35	Body seal	370/0106 ● □
36	Outlet flange	370/0130
37	Split ring (2)	5128-013
38	2" BSP dust cap	10301PS
39	M16 hex bolt (4)	5111-036

SEAL KITS

Part number **826/00SK** contains all parts marked ■
 Part number **370/015SK** contains all parts marked □

Note 1 - PTFE wafer gasket 5005-828 is not included in the seal kit. Please order separately if required.

REPAIR KITS

Part number **826/00RKA** contains all parts marked ●
 Part number **370/015RK** contains all parts marked ○

Note 2 - Seal flange assembly 826/0817X and countersunk bolt 5111-018 are not included in the repair kit. Please order separately if required.
 Seal flange assembly part number varies according to specification.