



Halar® Lined 3" 45° Footvalve - inlet flange drilled 8 x 14mm holes equi-spaced on a 178mm PCD; outlet flange drilled 4 x 17mm holes equi-spaced on a 160mm PCD. Valve manufactured in stainless steel and fitted with a Viton main seal. Bayonet cap and spring coated with Halar®, poppet lined with PFA and lifting plunger encased in PTFE bellows.

Options - Other main seal materials are available. Optional remote operating lever. Range of lined discharge valves and vent valves available for use with corrosive cargoes. Pneumatically actuated version.

Specification

Weight	10.5 Kg
Design Pressure (MAWP)	3 Bar (43.5 PSI)
Test Pressure	4 Bar (58.0 PSI)
Design Temperature	-20°C to +100°C (-4°F to +212°F)

Approved to BS EN14433.

Range

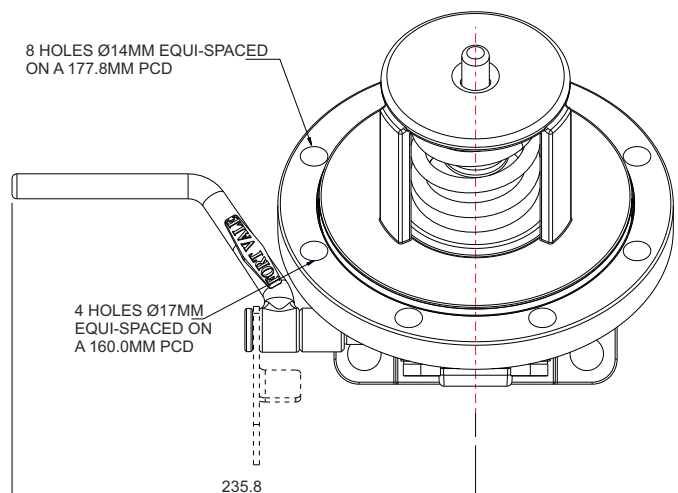
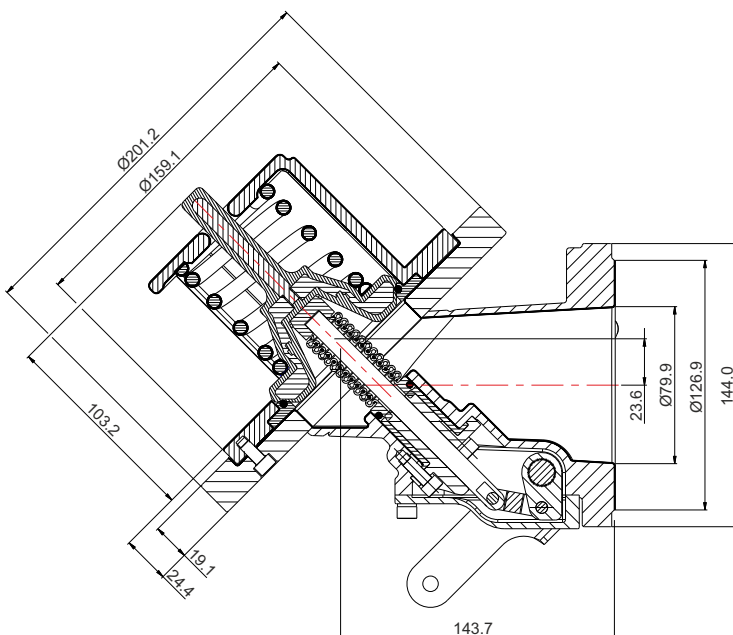
Part No.	Description
82L/1000V	Halar® lined 3" 45° Footvalve, Viton seal
82L/1000P	Halar® lined 3" 45° Footvalve, PTFE seal
82L/1000K	Halar® lined 3" 45° Footvalve, Kalrez seal
82L/1000XPN	Halar® lined 3" 45° Footvalve - pneumatically actuated.

Associated Parts

Associated Parts	Part No.
Remote operating lever	324/8927
Retaining collar for remote lever	324/8928
Tank pad suitable for lining	324/9000L
Stud kit	324/2055
Bolting kit – 6 hole outlet	360/0300
Bolting kit – 4 hole outlet	311/3000
Inlet gasket – 8 hole	5005-015
Outlet gasket – 6 hole	5005-169
Outlet gasket	5005-049

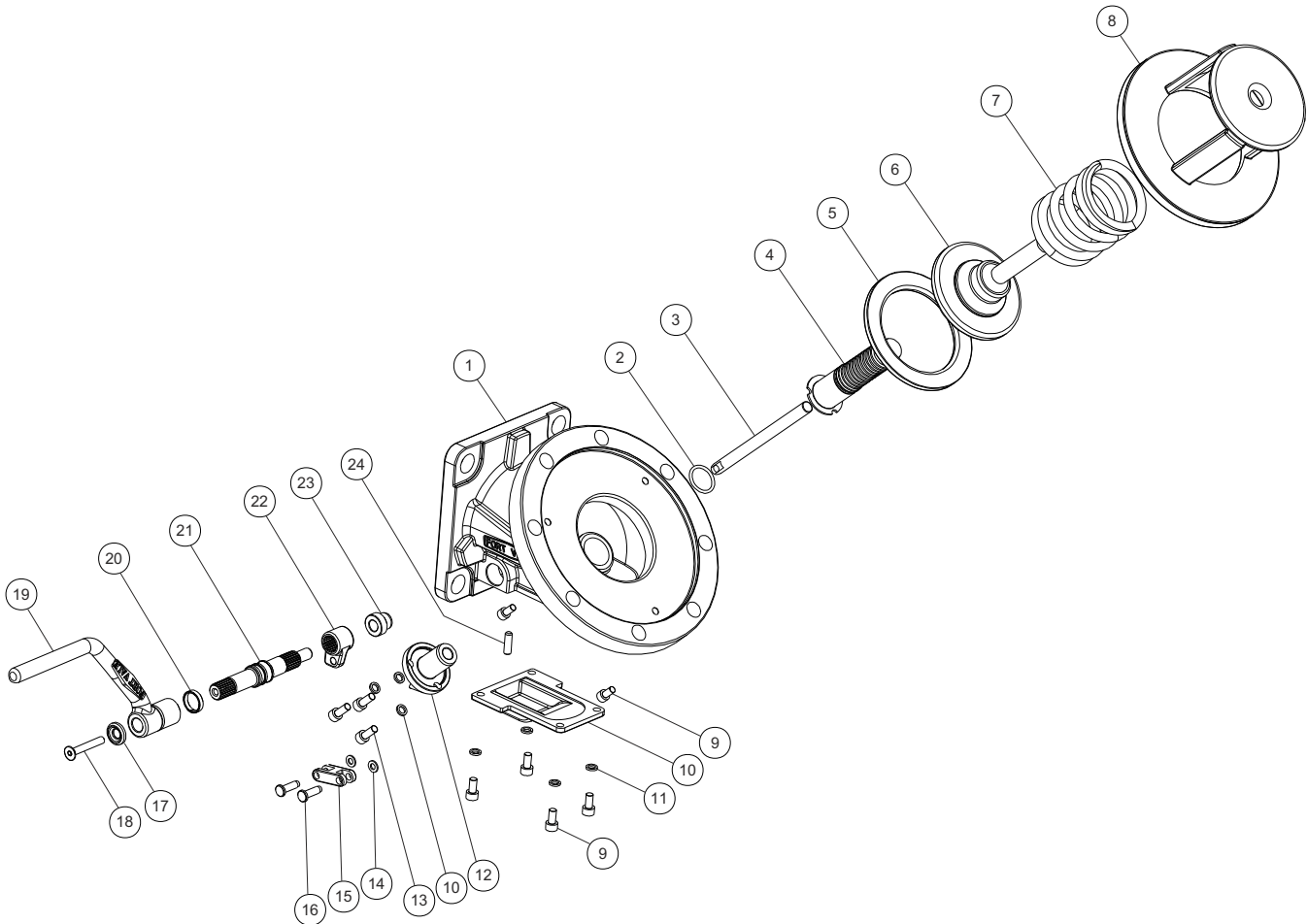
Fitting Details

Part Number : 82L/1000X



Parts drawing

FORT VALE®



SELF ADHESIVE DECAL - PART NO. 326/0300

Text in English, German and French

Item	Description	Part No.
1	Lined body assembly	826/1135
2	Viton O ring *See Note	5005-624
3	Lifting plunger	826/1133
4	Sealing bellows	826/1137
5	Viton poppet seal *See Note	826/1136
6	PFA lined poppet	826/1138P
7	Halar® coated spring	5104-875L
8	Halar® lined bayonet cap	826/1126FL
9	M6 cap screw (7)	5111-034
10	Dust cover	826/1139C
11	Spring washer (7)	5113-044
12	Plunger bearing	826/1127
13	M6 cap screw (3)	5111-108
14	Plain washer (2)	5113-015
15	Link arm	826/1132
16	Pivot pin (2)	826/1141
17	Retaining washer	20370
18	Countersunk bolt	5111-147
19	Handle	330/5018
20	Bearing ring	826/1143
21	Spindle	826/1128
22	Crank	826/1129
23	Bearing bush	826/1131
24	Extractable pin	826/1142

NOTE : Material and part number varies according to valve specification.