

3" Univalve Bottom Discharge Assembly - comprising of 3" 45° Highlift footvalve with integral 3" butterfly valve, terminating with a 3" BSP spigot and cap. Inlet flange drilled 8 x 14mm holes equi-spaced on a 178mm PCD. The butterfly valve has a unique CLEAN position which allows access for cleaning equipment without removing the valve from the tank. Footvalve body with 'Superseat' (alloy 625) seating area. All other parts manufactured in 316 stainless steel with a Fortyt main seal to the footvalve and PTFE main seal to the butterfly valve and cap.

Options - Available with alloy C276 seating area to the footvalve. Steam-heated version. Flanged outlet version (drilled 3"BSTD/3"ASA 150/DIN80 PN40). 3" Camlock outlet version.

Specification

Weight	12.2 Kg *See Note
Design Pressure (MAWP)	4 Bar (58 PSI)
Test Pressure	6 Bar (87 PSI)
Design Temperature	-55°C to +200°C (-67°F to +392°F)

Note: Weight and dimensions vary according to the valve specification.

Design approval by Lloyds Register of Shipping
Approved to EN14433:2006

To make sure that the tank stays sealed if an accident occurs, the valve body has a shear groove that is designed to break so that the internal part of the valve stays closed and attached to the tank.

Range

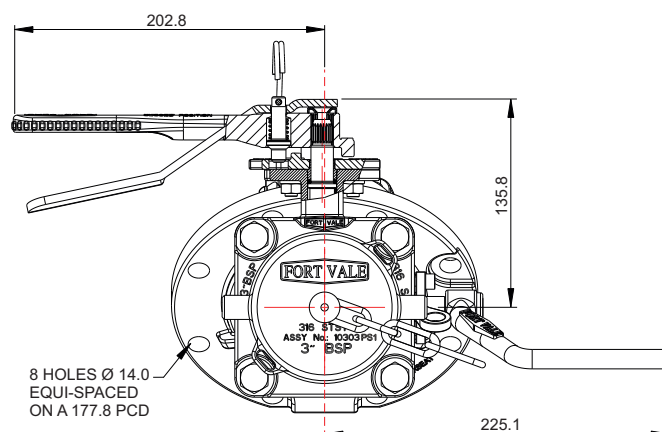
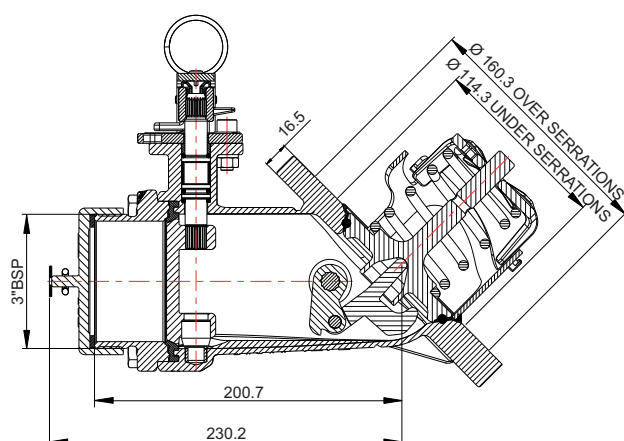
Part No.	Description
804/4000A	Superseat with 3" BSP outlet
804/4000AHS	Alloy C276 footvalve seat, 3" BSP outlet
804/4010A	Superseat with flanged outlet: 3"BSTD/3"ASA150/DIN80 PN40
804/4020A	Superseat with 3" camlock outlet & cap

Associated Parts

Associated Parts	Part No.
Tank pad	324/9000
Stud kit	324/2070
Inlet gasket – 8 hole	5005-015
3" BSP Blank cap with PTFE washer	10303PS

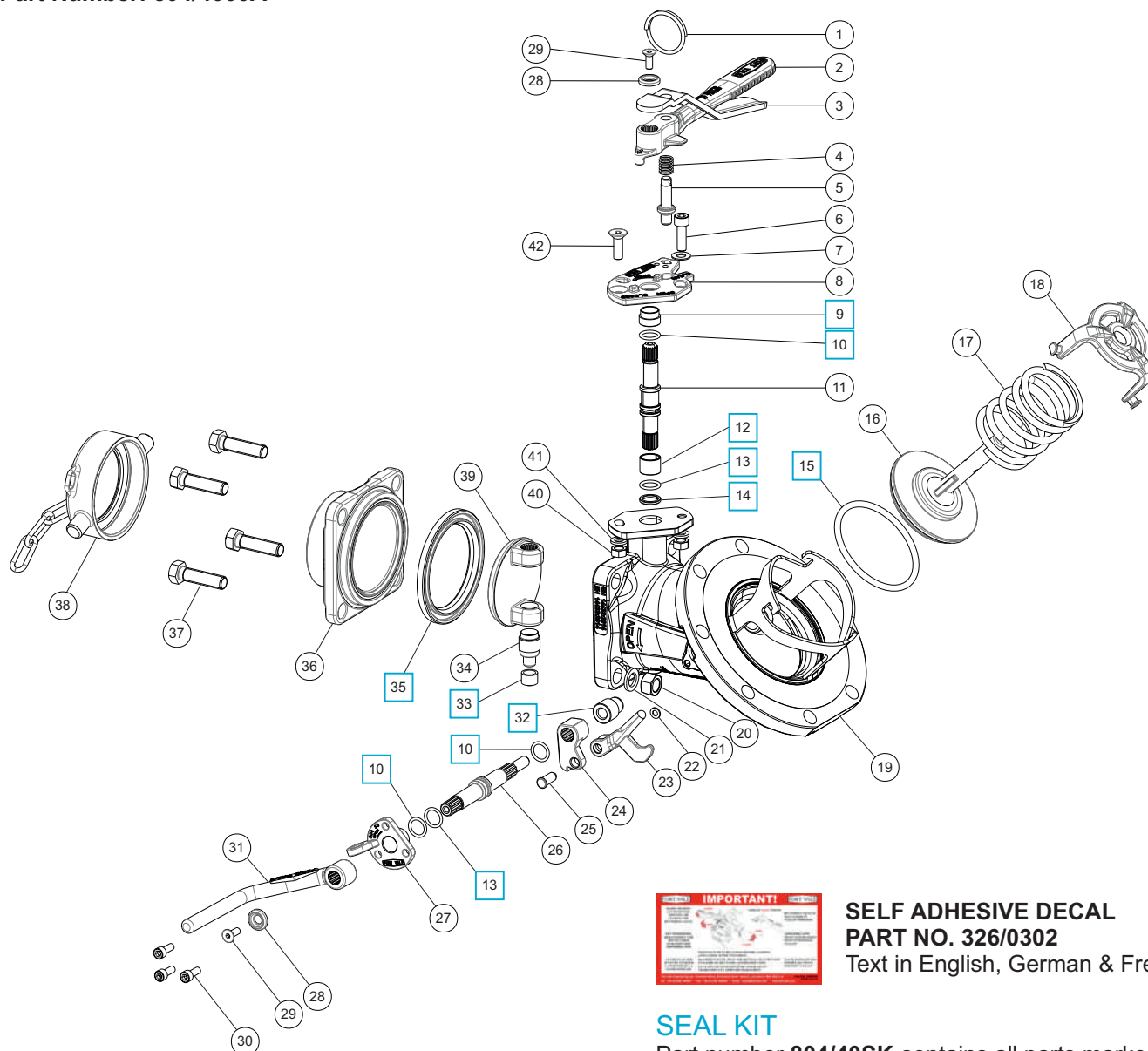
Fitting Details

Part Number : 804/4000A



Parts drawing

Part Number: 804/4000A

**SELF ADHESIVE DECAL
PART NO. 326/0302**

Text in English, German & French

SEAL KITPart number **804/40SK** contains all parts marked

Item	Description	Part No.
1	Split ring	368/0011
2	Butterfly valve handle	368/0057
3	Handle lever	368/9837
4	Handle location spring	368/0012
5	Handle locator pin	368/0010
6	M8 cap screw	5111-148
7	M8 plain washer	5113-005
8	Stuffing clamp	368/0047
9	Stuffing clamp bush	368/0301
10	PTFE O ring (3)	20363
11	Spindle	368/0201
12	Split bearing	252/0517
13	Viton O ring (2)	20361
14	PTFE spindle seat	368/0009
15	Fortyt footvalve main O ring	5005-104
16	Poppet	324/2020
17	Closure spring	5104-971
18	Spring top plate	290/6104
19	Body assembly	826/1252B
20	M12 full nut (4)	5112-006
21	M12 spring washer (4)	5113-010

Item	Description	Part No.
22	5mm plain washer	5113-015
23	Lifting finger	821/0033
24	Crank block	821/0025
25	Pivot pin	821/0034
26	Spindle	821/0010
27	Stuffing clamp	324/1001
28	Retaining washer (2)	20370
29	M6 bolt (2)	5111-030
30	M6 cap screw (3)	5111-017
31	Footvalve handle	330/5010
32	PTFE crankshaft end bush	20362
33	PTFE bottom bush	368/0035
34	Bottom spindle	368/0036
35	PTFE Butterfly valve main seal	368/0002
36	Outlet flange	368/5129
37	M12 hex bolt (4)	5111-023
38	3" BSP cap with chain & washer	10303PS1
39	Closure plate	368/0400
40	M8 full nut (2)	5112-001
41	M8 spring washer (2)	5113-003
42	M8 countersunk bolt	5111-085