

3" x 2" Offshore Outlet Assembly - comprising of a 3" NB 90° footvalve with extended reduced outlet terminating in a 2" NB ball valve with 2" BSP outlet and cap. The outlet pipe incorporates a $\frac{3}{4}$ " sampling point with firesafe ball valve fitted with a cap. Contact parts manufactured in 316 stainless steel fitted with Fortyt main seal to footvalve.

Specifically designed to fit DNV 2.7-1 Chemical offshore tanks.

Options - The length of the assembly can be made to suit customer requirements. The footvalve can be supplied with a replaceable seat. Other outlets connections are available: flanged, camlock, dry disconnect units.

Specification

Weight	23 Kg *Note
Design Pressure (MAWP)	4 Bar (58 PSI)
Hydraulic Test Pressure	6 Bar (87 PSI)
Design Temperature Range	-40°C to 200°C *Note (-40°F to 392°F)

Note: Varies according to the valve specification.

To make sure that the tank stays sealed if an accident occurs, the valve body has a shear groove that is designed to break so that the internal part of the valve stays closed and attached to the tank.

i Operating Instructions available - OPIN18.

Range

Part No.	Description
29F/10520834F08	834mm overall length from valve inlet centre to end of 2" BSP outlet
29F/10520774F09	774mm overall length from valve inlet centre to end of 2" BSP outlet. All parts made in 316/316L st/steel.

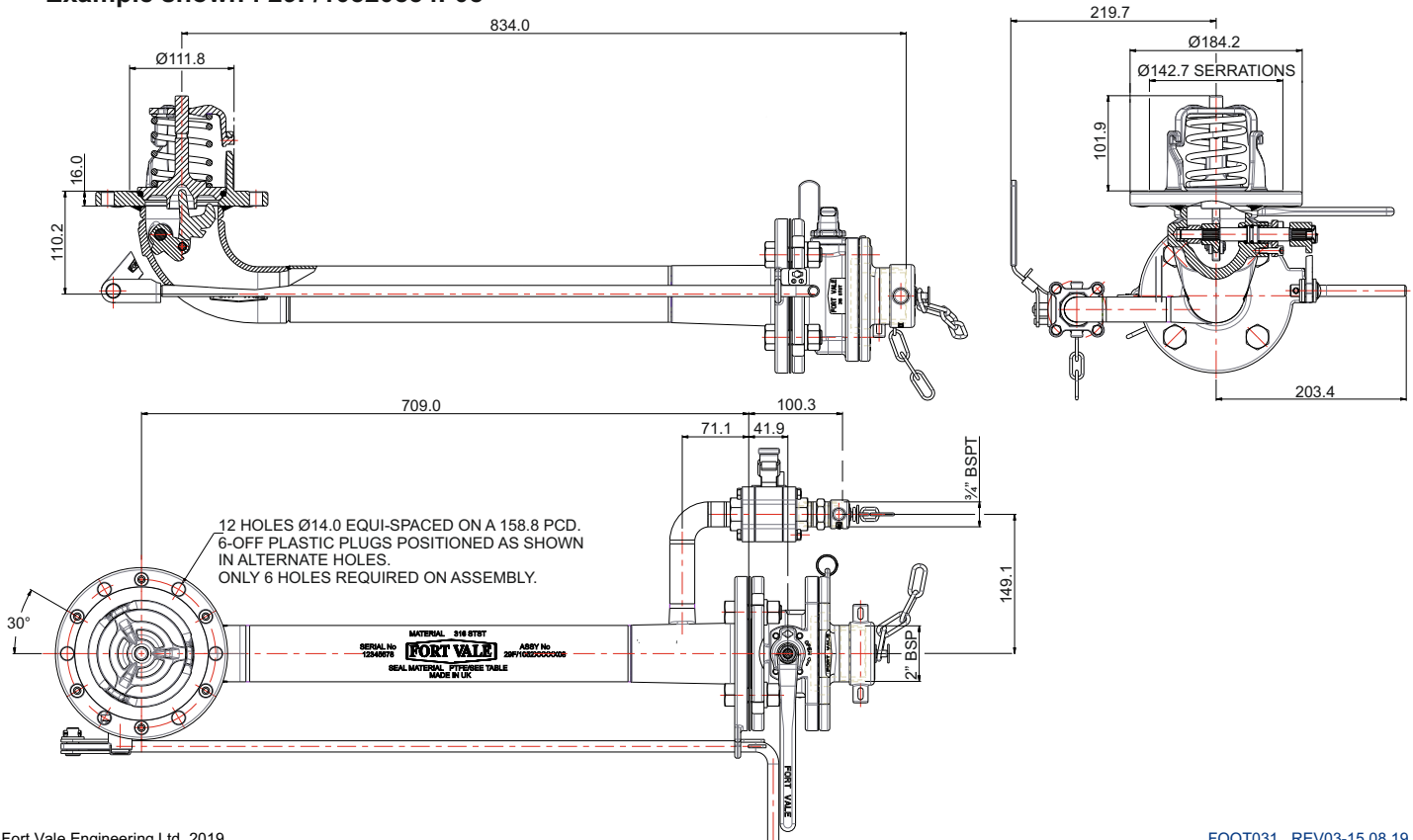
For full list of available valve configurations, please see drawing reference OUTLET/ASSY/PART/NO.

Associated Parts

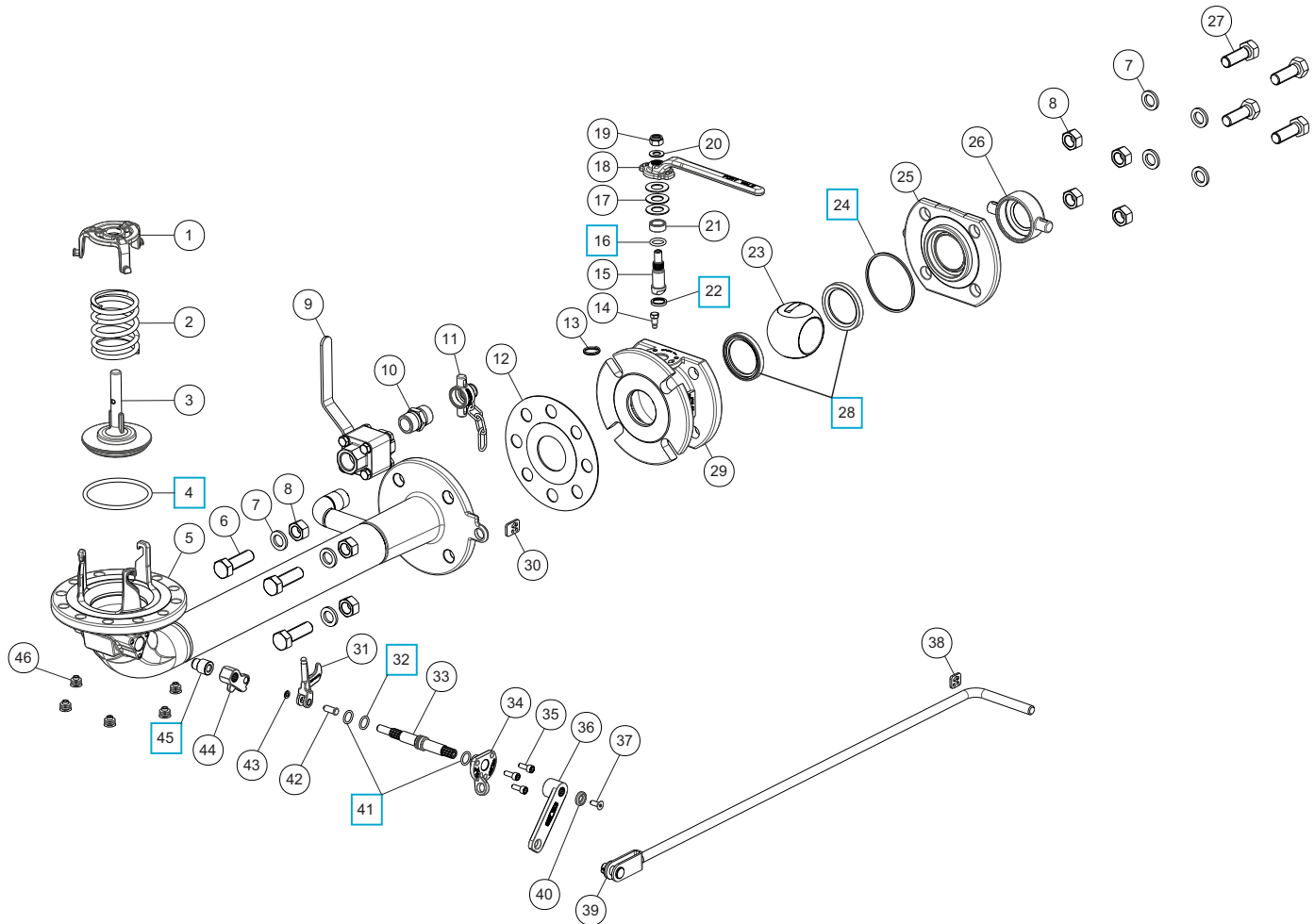
Part No.	Description
11954/S	Tank weld-in flange
290/1300	M12 stud kit with nuts and spring washers
5005-016	PTFE inlet gasket.

Fitting Details

Example shown : 29F/10520834F08



Parts Drawing



Item	Description	Part No.
1	Spring top plate	290/6104
2	Spring	5104-971
3	Footvalve poppet	324/2020
4	Fortyt O ring	5005-104
5	Footvalve body assembly *Note	29F/XXXXA08
6	M16 hex bolt (4)	5111-031
7	M16 spring washer (8)	5113-012
8	M16 full nut (8)	5112-003
9	¾" Firesafe Ballvalve	410/500F
10	¾" BSPTM x ¾" BSPTM nipple	5128-091
11	¾" BSP cap with washer & chain	10306PSS
12	CNAF/PTFE gasket	5005-726
13	Split ring	5128-013
14	Stop pin	370/0107
15	Spindle	370/0120
16	PTFE O ring	5005-688
17	16mm Belleville washer (3)	5113-038
18	Ball valve handle	370/0125
19	M10 self-locking nut	5112-008
20	M10 plain washer	5113-009
21	Stuffing collar	370/0103
22	Bottom bearing	370/0104
23	50mm ball	370/3301

Item	Description	Part No.
24	Body seal	370/0106
25	Outlet flange	370/0130
26	2" BSP cap with chain & seal	10301PSS
27	M16 hex bolt (4)	5111-036
28	PTFE ball seal (2)	370/0102
29	2" ball valve body	370/0110
30	Large TIR tab	20491
31	Extended lifting finger	821/0054
32	Viton O ring	20361
33	Spindle	821/0010
34	Stuffing clamp	324/1001
35	M6 cap screw (3)	5111-017
36	Handle *Note	20607/X
37	M6 countersunk bolt	5111-030
38	Small TIR plate	20492
39	Remote handle *Note	330/5020X
40	Retaining washer	20370
41	PTFE O ring (2)	20363
42	Pivot pin	821/0034
43	5mm plain washer	5113-015
44	Crank block	821/0025/3
45	Crankshaft end bush	20362
46	Plastic plug (6)	5028-227

SEAL KITS

Part number **370/015SK** contains all parts marked

Part number **826/00SK** contains all parts marked

Note : Part number varies according to specification.