

2" Pneumatically Operated Air Inlet Ball Valve - inlet flange drilled 4 x 18mm holes on a 125mm PCD; outlet flange 4 x 18mm open slots on a 120.7mm minimum PCD to suit 2" ASA 150/DIN50 PN40. Valve manufactured in 316 stainless steel with PTFE seals. Fitted with Kinetrol pneumatic actuator with spring return and 1/4" BSP air inlet.

Options - Full range of manually operated air inlet valves available.

Specification

Weight	5.88 Kg
Design Pressure (MAWP)	7.5 Bar (108.8 PSI)
Test Pressure	15 Bar (217.5 PSI)
Design Temperature: Valve	-40°C to 205°C (-40°F to 400°F)
Kinetrol Actuator	-20°C to 80°C (-4°F to 176°F)

Ball valve approved to BS EN 14432.

Range

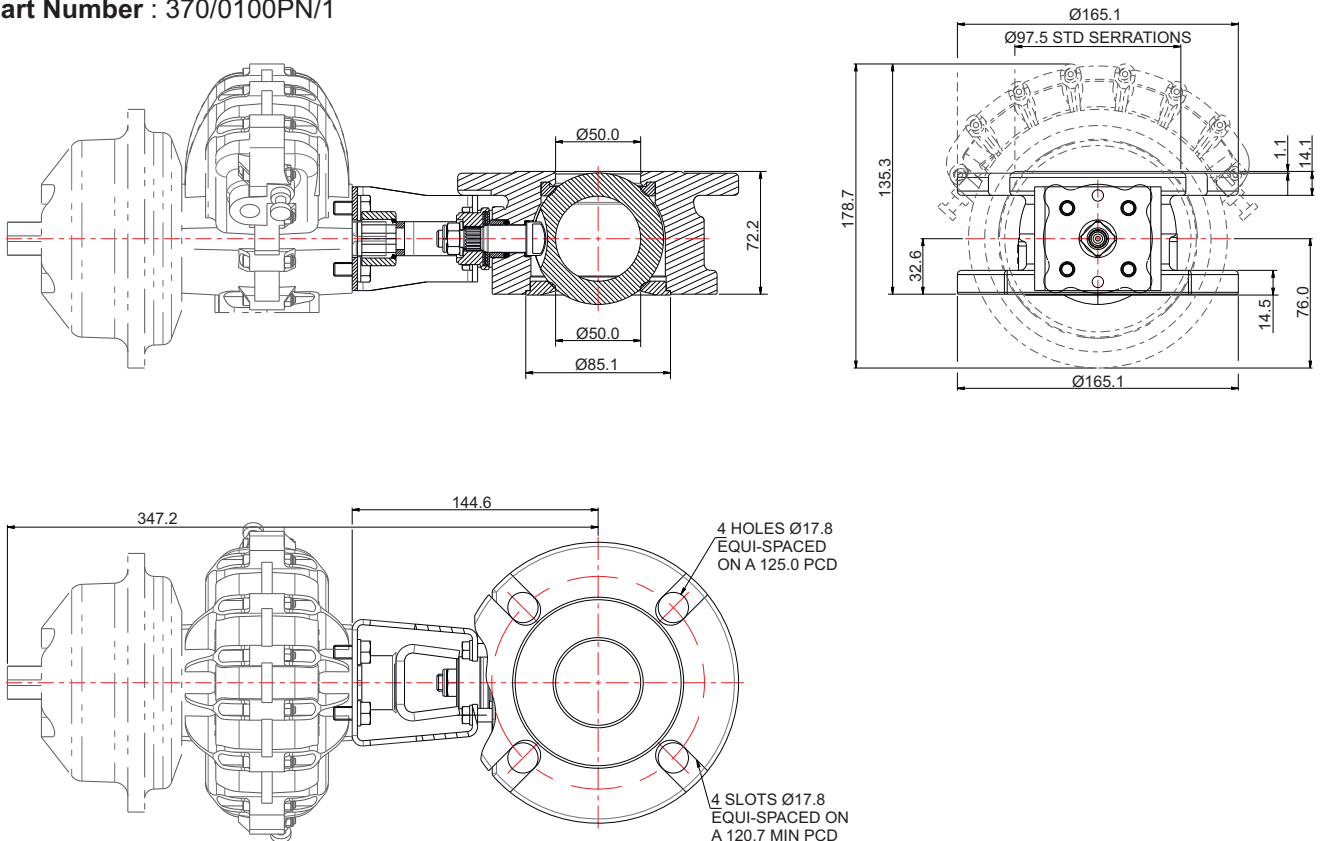
Part No.	Description
370/0100PN/1	2" pneumatic Blacko ball valve
370/0100	2" manually operated Blacko ball valve

Associated Parts

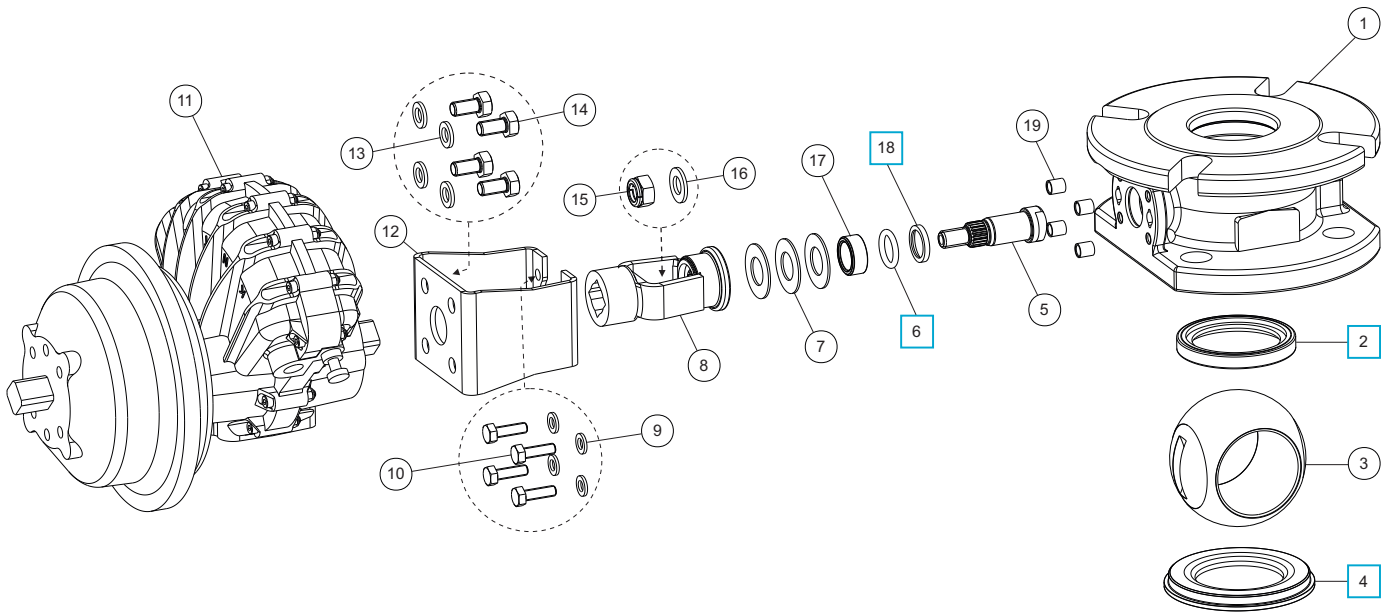
Associated Parts	Part No.
Mating flange	294/0082
Tank weld-in pad	355/3100
Stud kit	311/3700
Outlet gasket	5005-361
Blind flange	370/4239CM
Bolting kit	311/3000

Fitting Details

Part Number : 370/0100PN/1



Parts drawing



Item	Description	Part No.
1	Body	370/0110
2	PTFE front seal	370/0102 <input type="checkbox"/>
3	Ø50mm ball	370/3301
4	PTFE rear seal	370/0105 <input type="checkbox"/>
5	Spindle	370/0120
6	PTFE O ring	5005-688 <input type="checkbox"/>
7	Belleville washer (3)	5113-038
8	Spline adaptor assembly	370/0209
9	M6 spring washer (4)	5113-008
10	M6 hex bolt (4)	5111-076
11	Kinetrol pneumatic actuator	5127-078
12	Mounting bracket	370/0208
13	M8 spring washer (4)	5113-003
14	M8 hex bolt (4)	5111-822
15	M10 self lock nut	5112-008
16	M10 plain washer	5113-009
17	Stuffing collar	370/0103
18	Bottom bearing bush	370/0104 <input type="checkbox"/>
19	Spacer boss (4)	370/0163

SEAL KIT

Part number **370/01SK** contains all parts marked