

Specification

Nominal size/body angle

80mm to 50mm / 45°

Inlet connection

Flanged: 8 x 14mm holes on a 177.8mm PCD

Properties

80mm footvalve with replaceable seat, 3/4" firesafe sample ball valve and cap, integral 50mm ball valve with 2" BSP outlet and cap

Options

Different seat materials are available, contact Fort Vale

Materials

Contact parts: 316 stainless steel

Main seal footvalve: Fortyt

Main seal ball valve: PTFE

Alternatives are available, refer to the Design Options page

Design Conditions

Weight:	15.4 Kg
Design Pressure (MAWP):	4 Bar
Test Pressure:	6 Bar
Design Temperature Min:	-40°C
Design Temperature Max:	200°C

NOTE: The Design Conditions and Section View dimensions are for the specified part number only.

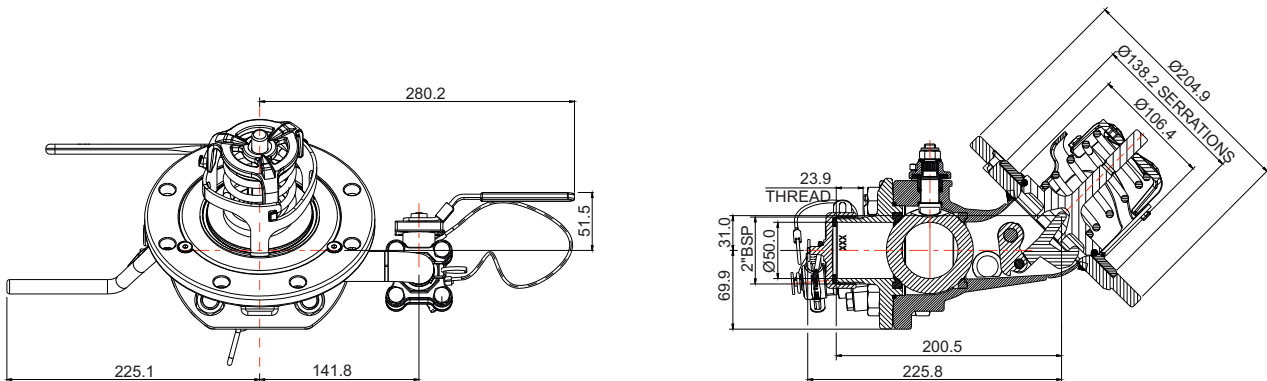
Range

Description	Part No.
St/st seat, left hand ball valve	804/0085LSA
St/st seat, right hand ball valve	804/0085RSA

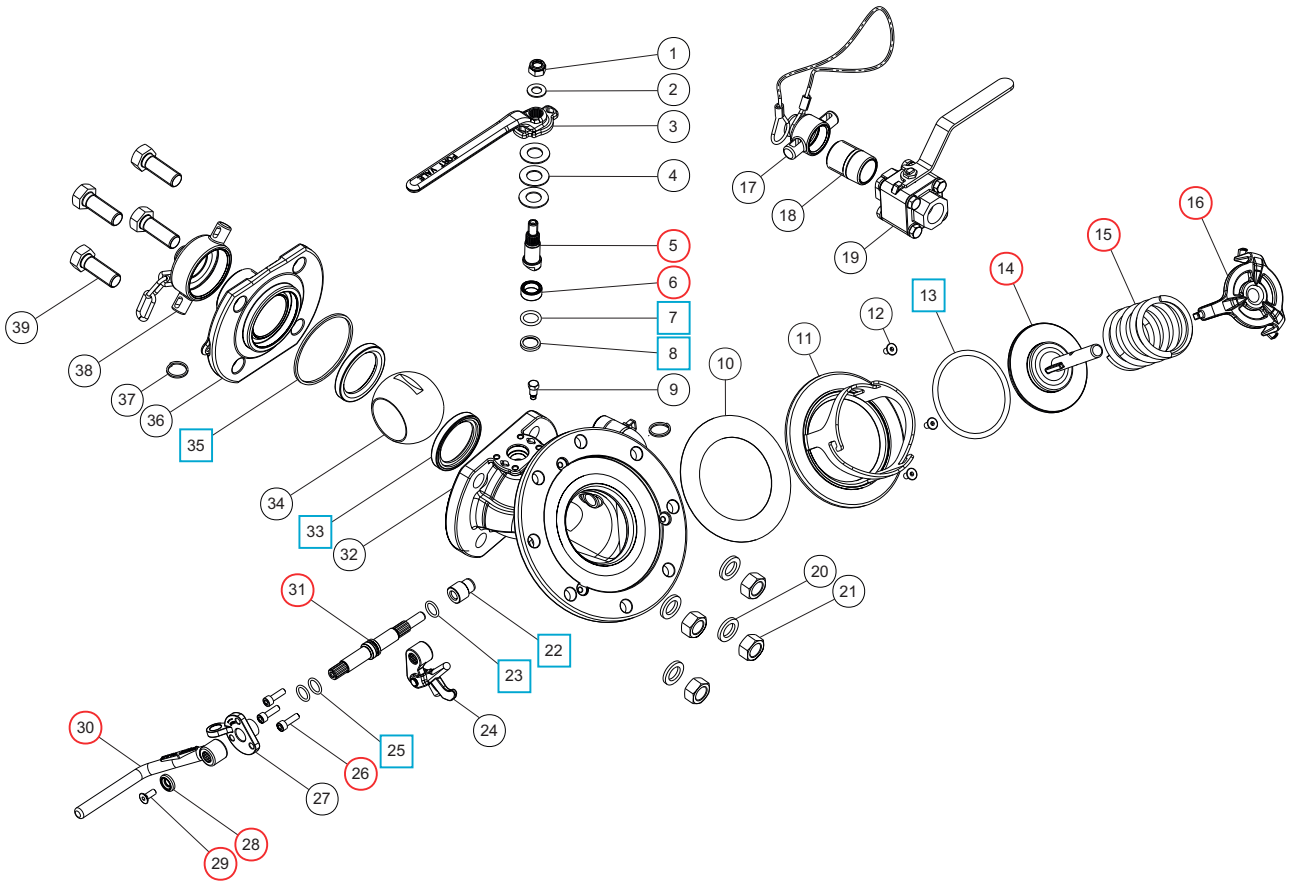
Related Parts

Description	Part No.
Weld-in flange	324/9000
M12 stud kit	324/2060
CNAF/PTFE inlet gasket	5005-015

Section View



Parts Drawing



Parts List

Item	Description	Part No.	
1	M10 self locking nut	5112-008	
2	M10 washer	5113-009	
3	Ball valve handle	370/0125	
4	Belleville washer (3)	5113-038	
5	2" ball valve spindle	370/0120	○
6	Stuffing collar	370/0103	○
7	PTFE O ring	5005-688	□ ○
8	Bottom bearing	370/0104	□ ○
9	Stop pin	370/0107	
10	PTFE wafer gasket *Note 1	5005-828	
11	Seal flange assembly *Note	826/0817X	
12	6mm countersunk screw (3)	5111-018	
13	Fortyt O ring	5005-104	■ ●
14	Solid poppet	324/2020	●
15	Spring	5104-971	●
16	Spring top plate	290/6104	●
17	¾" cap with wire	10306PSW	
18	¾" nipple	338/1304	
19	¾" firesafe ball valve	410/500F	
20	M16 spring washer (4)	5113-012	
21	M16 full nut (4)	5112-003	
22	Crankshaft end bush	20362	■ ●
23	PTFE O ring (2)	20363	■ ●
24	Crank block assembly	821/0300	
25	Viton O ring	20361	■ ●
26	M6 cap screw (3)	5111-017	●
27	Stuffing clamp	324/1001	
28	Retaining washer	20370	●
29	M6 countersunk set screw	5111-030	●
30	Footvalve handle	330/5010	●
31	Spindle	821/0010	●
32	45° footvalve body	826/1176316	
33	PTFE ball seal (2)	370/0102	□ ○
34	50mm ball	370/3301	
35	Body seal	370/0106	□ ○
36	Outlet flange	370/0130	
37	Split ring (2)	5128-013	
38	2" BSP cap	10301PS	
39	M16 hex bolt (4)	5111-031	

NOTE: The valve specification changes the Part No.

NOTE 1: The PTFE wafer gasket is not included in the footvalve seal kit. We recommend that you replace the gasket during normal maintenance or if you disassemble the footvalve. Please order it separately.

Seal Kit

Description	Part No.
All parts marked ■ in the Parts List	826/00SK
All parts marked □ in the Parts List	370/015SK

Repair Kit

Description	Part No.
All parts marked ● in the Parts List	826/00RKA
All parts marked ○ in the Parts List	370/015RK