

3" 45° Uniflow Bottom Discharge Assembly - comprising of a 3" 45° Cleanflow footvalve with integral butterfly valve, terminating with a 3" BSP spigot and stainless steel cap. Inlet flange drilled 8 x 14mm holes equi-spaced on a 178mm PCD. The butterfly valve has a unique CLEAN position which allows access for cleaning equipment without removing the valve from the tank. Footvalve body with 'Superseat' (alloy 625) seating area. All other parts manufactured in 316 stainless steel with a Fortyt main seal to the footvalve and a PTFE main seal to the butterfly valve and cap.

Options - Available with alloy C276 seating area to the footvalve. Steam-heated version. 3" 30° Uniflow bottom discharge assembly available.

Specification

Weight	13 Kg * See Note
Design Pressure (MAWP)	4 Bar (58 PSI)
Test Pressure	6 Bar (87 PSI)
Design Temperature	-40°C to +200°C (-40°F to +392°F)

***Note:** Weight and dimensions vary according to the valve specification.

Design approval by Lloyds Register of Shipping.
Approved to BS EN14433 & EN14432.

I Operating Instructions available - OPIN28.

To make sure that the tank stays sealed if an accident occurs, the valve body has a shear groove that is designed to break so that the internal part of the valve stays closed and attached to the tank.

Range

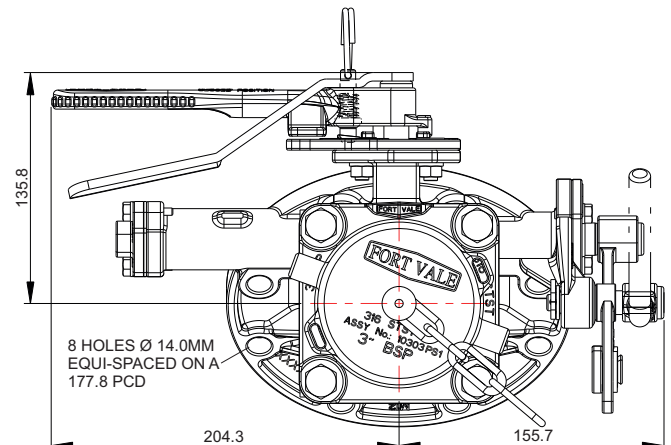
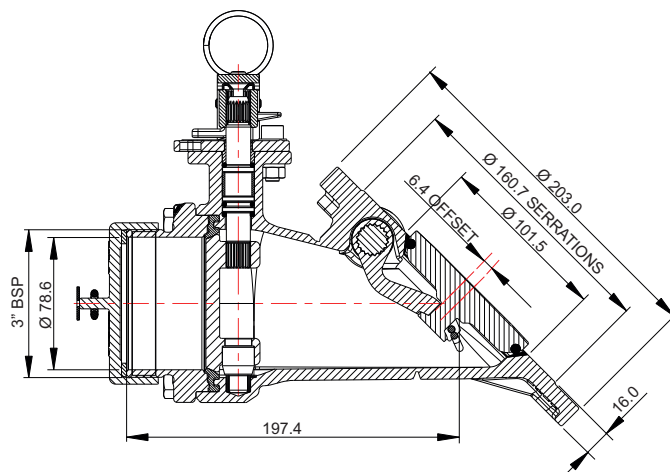
Part No.	Description
806/4000	Superseat with 3" BSP outlet
806/4000HS	Alloy C276 footvalve seat, 3" BSP outlet
807/4000	3" 30° standard assembly with 3" BSP outlet

Associated Parts

Associated Parts	Part No.
Tank weld-in flange	324/9000
Stud kit	845/2040
Inlet gasket – 8 hole	5005-015
3" BSP Blank cap with PTFE washer	10303PS1
Self-adhesive decal	326/0303

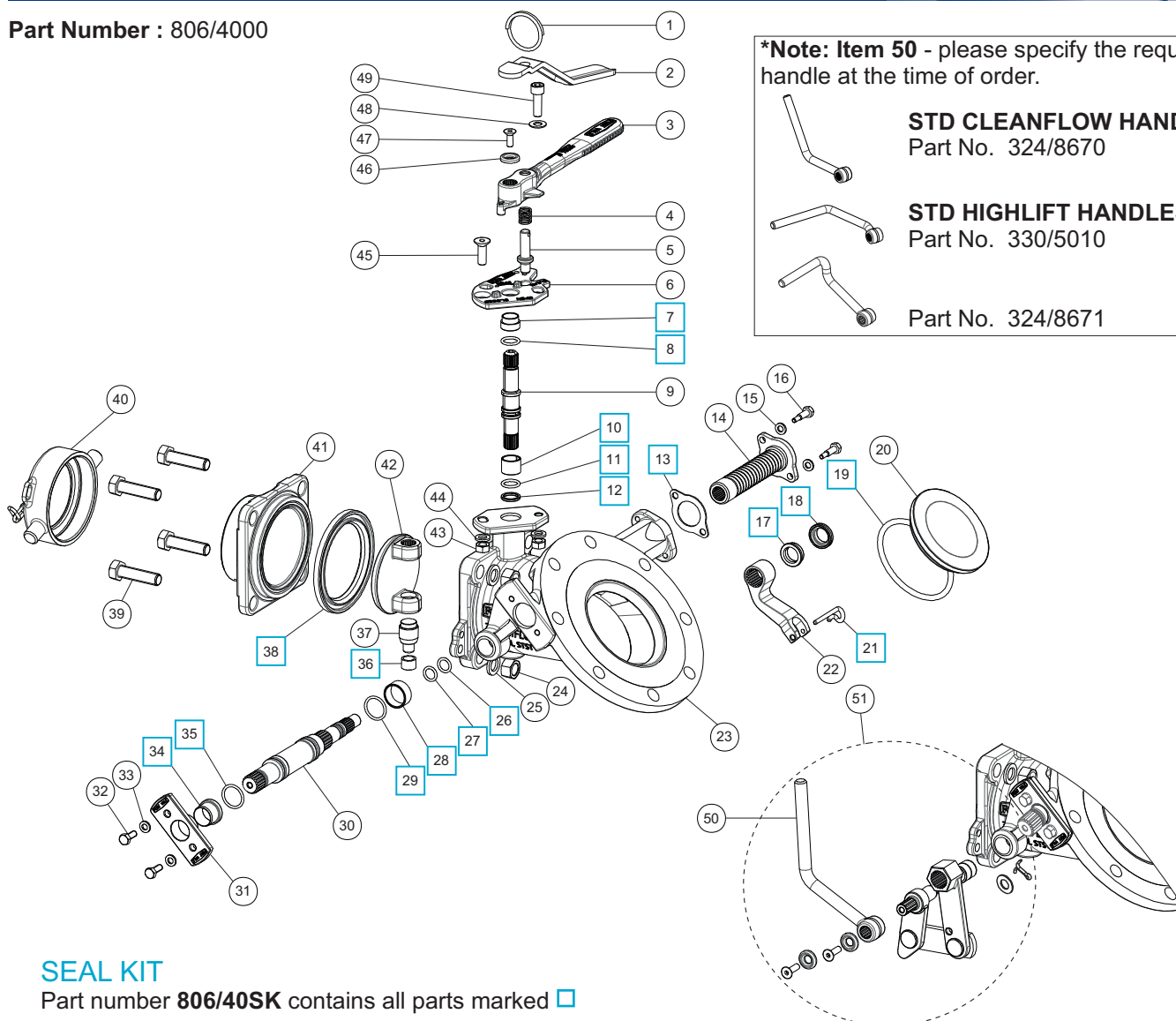
Fitting Details

Part Number : 806/4000



Parts drawing

Part Number : 806/4000



SEAL KIT

Part number **806/40SK** contains all parts marked ☐

Item	Description	Part No.
1	Split ring	368/0011
2	Handle lever	368/9837
3	Butterfly valve handle	368/0057
4	Handle location spring	368/0012
5	Handle locator pin	368/0010
6	Stuffing clamp	368/0047
7	Stuffing clamp bush	368/0301 <input type="checkbox"/>
8	PTFE O ring	20363 <input type="checkbox"/>
9	Spindle	368/0201
10	Split bearing	252/0517 <input type="checkbox"/>
11	Viton O ring	20361 <input type="checkbox"/>
12	PTFE spindle seat	368/0009 <input type="checkbox"/>
13	Spring boss gasket	5005-845 <input type="checkbox"/>
14	Spring assembly	845/0050
15	Spring washer (2)	5113-008
16	Clamp screw (2)	845/0017
17	Seal energizer	845/0063 <input type="checkbox"/>
18	Bush seal	845/0064 <input type="checkbox"/>
19	Fortyt O ring	5005-104 <input type="checkbox"/>
20	Poppet	845/0040
21	Retaining pin	845/0015 <input type="checkbox"/>
22	Lifting fork	845/0010
23	Body	845/1107B
24	M12 full nut (4)	5112-006
25	M12 spring washer (4)	5113-010
26	Perfluoroelastomer O ring	10133PHT <input type="checkbox"/>

Item	Description	Part No.
27	PTFE O ring	5005-008 <input type="checkbox"/>
28	Spindle bearing	845/0062 <input type="checkbox"/>
29	Perlast O ring	5005-384 <input type="checkbox"/>
30	Spindle	845/0200
31	Stuffing clamp	845/0016
32	Clamp bolt (2)	5111-022
33	Spring washer (2)	5113-008
34	Stuffing seal	845/0061 <input type="checkbox"/>
35	Viton O ring	5005-336 <input type="checkbox"/>
36	PTFE bottom bush	368/0035 <input type="checkbox"/>
37	Bottom spindle	368/0036
38	PTFE butterfly valve main seal	368/0002 <input type="checkbox"/>
39	M12 hex bolt (4)	5111-023
40	3" BSP cap with chain & washer	10303PS1
41	Outlet flange	368/5129
42	Closure plate	368/0400
43	M8 full nut (2)	5112-001
44	M8 spring washer (2)	5113-003
45	M8 countersunk bolt	5111-085
46	Retaining washer	20370
47	M6 setscrew	5111-030
48	M8 plain washer	5113-005
49	M8 cap screw	5111-148
50	Handle – See illustrations above	*See Note
51	Handle linkage assembly	324/8910