

Specification

Nominal size/body angle

100mm / 45°

Inlet connection

Flanged: 8 x 18mm holes equi-spaced on a 210mm PCD

Outlet connection

Flanged: 8 x 18mm holes on a 180mm PCD

Properties

Hydraulic actuator with a 1/8" BSP connection

Materials

Seating area: Superseat (alloy 625)

Contact parts: 316 stainless steel

Main seal: Fortyt

Alternatives are available, refer to the Design Options page

Design Conditions: Footvalve

Weight:	18.7 Kg
Design Pressure (MAWP):	4 Bar
Test Pressure:	6 Bar
Design Temperature Min:	-40°C
Design Temperature Max:	205°C

NOTE: The Design Conditions and Section View dimensions are for the specified part number only.

Design Code

BS EN 14433

Design Conditions: Hydraulic Cylinder

Design Pressure (MAWP):	200 Bar
Test Pressure:	300 Bar
Design Temperature Min:	-40°C
Design Temperature Max:	100°C

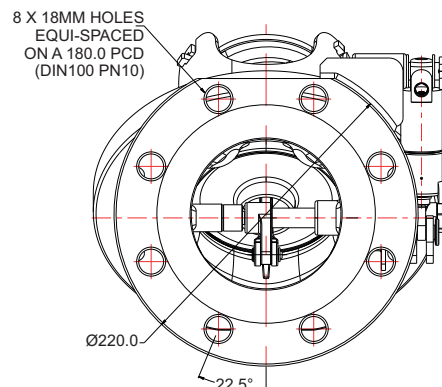
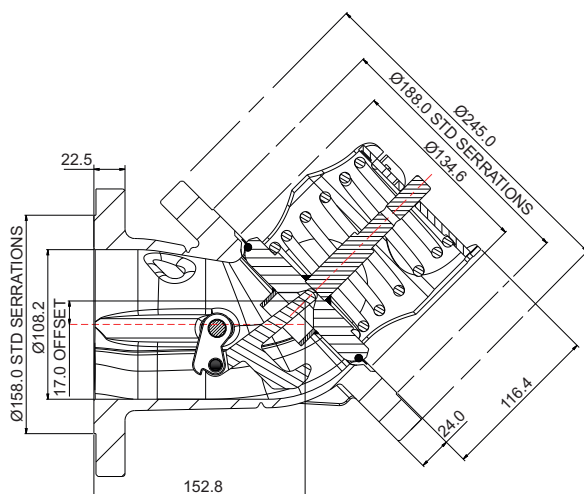
Range

Description	Part No.
Standard valve	854/0170GS
Outlet flange with flat top & bottom	854/0170GS/1
Standard valve with steam heating	854/0170GSS

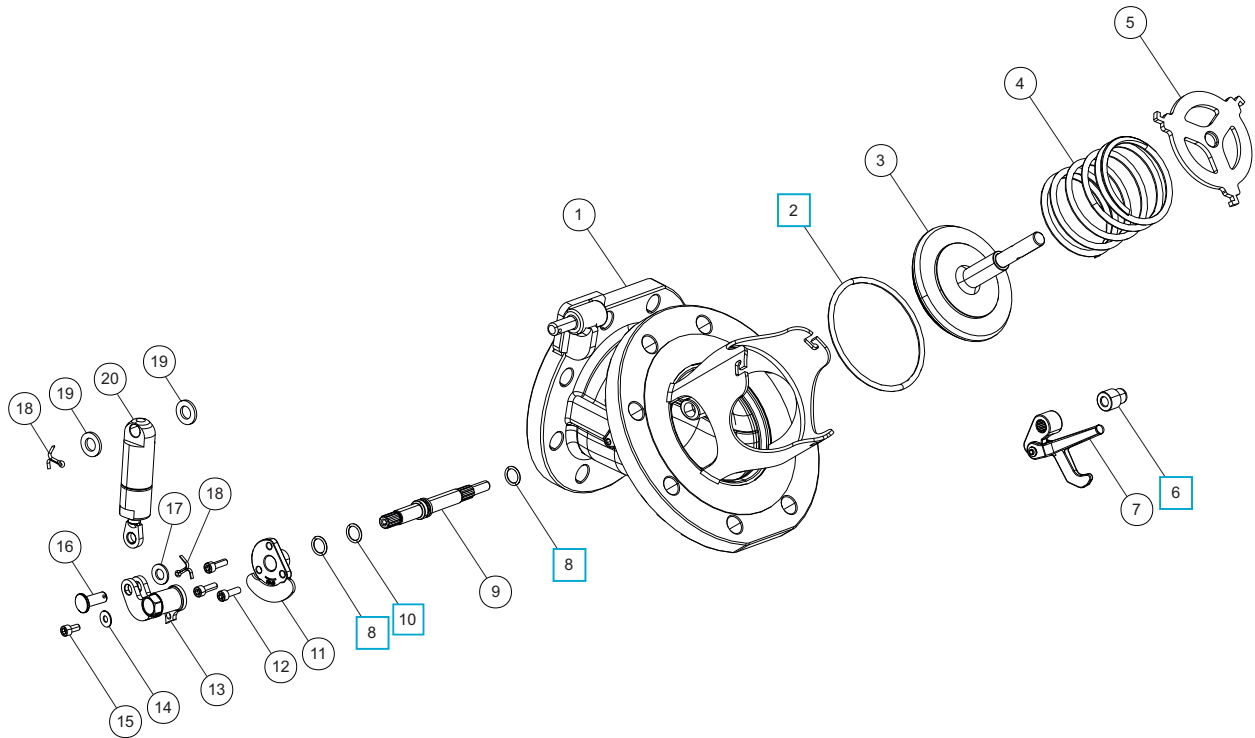
Related Parts

Description	Part No.
Weld-in flange	854/9000
CNAF/PTFE inlet gasket	5005-467
Glass filled PTFE outlet gasket	5005-437/1P1

Section View



Parts Drawing



Parts List

Item	Description	Part No.
1	Body	854/0175B
2	Fortyt O ring	5005-349 <input type="checkbox"/>
3	Poppet	853/2010
4	Spring	5104-973-2
5	Bayonet	854/2026
6	Crankshaft end bush	20362 <input type="checkbox"/>
7	Crank block & lifting finger	854/0300
8	PTFE O ring (2)	20363 <input type="checkbox"/>
9	Spindle	853/0010
10	Viton O ring	20361 <input type="checkbox"/>
11	Stuffing plate	854/0136
12	M6 cap screw (3)	5111-017
13	Crank arm	178/0261
14	Retaining washer	5113-039
15	M6 cap screw	5111-034
16	Cross pin	178/0259
17	M10 plain washer	5113-009
18	Split pin (2)	5220-008
19	M12 plain washer (2)	5113-006
20	Hydraulic cylinder	178/0260

Seal Kit

Description	Part No.
All parts marked <input type="checkbox"/> in the Parts List	854/00SK