

Specification

Nominal size/body angle

DN50 / 180°

Inlet connection

Flanged: 4 x 18mm holes equi-spaced on a 125mm PCD

Outlet connection

ACME threaded outlet with cap

Properties

Excess flow footvalve with ball valve, ACME outlet & cap

NOTE: You must install a separate tension spring to emergency-close the footvalve

Materials

Contact parts: 304/316 stainless steel

Footvalve main seal: PTFE

Ball valve main seal: RTFE

Cap seal: PTFE

Alternatives are available, refer to the Design Options page

Design Conditions

Weight: Liquid/Vapour Phase	18.8 Kg / 17.9 Kg
Design Pressure (MAWP):	34.5 Bar
Test Pressure:	70.0 Bar
Design Temperature Min/Max:	-55°C / 80°C

NOTE: The Design Conditions and Section View dimensions are for the specified part number only.

Design Codes

BS EN 14432

BS EN 14433

BS EN 13445

Obeys TPED, ADR, UKCA

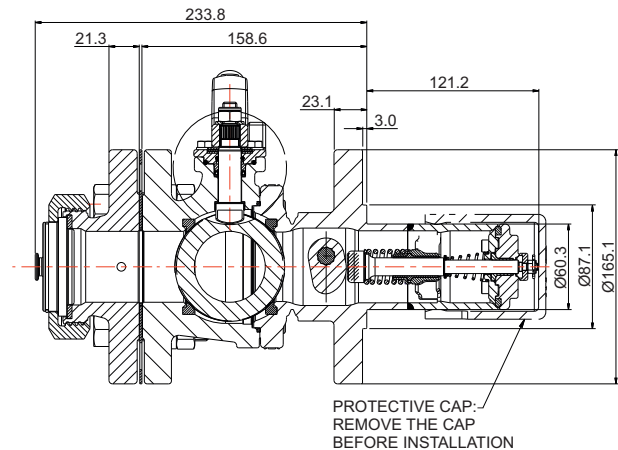
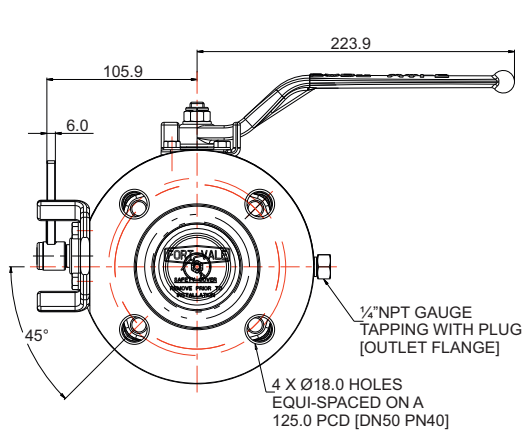
Design Approval

LRQA

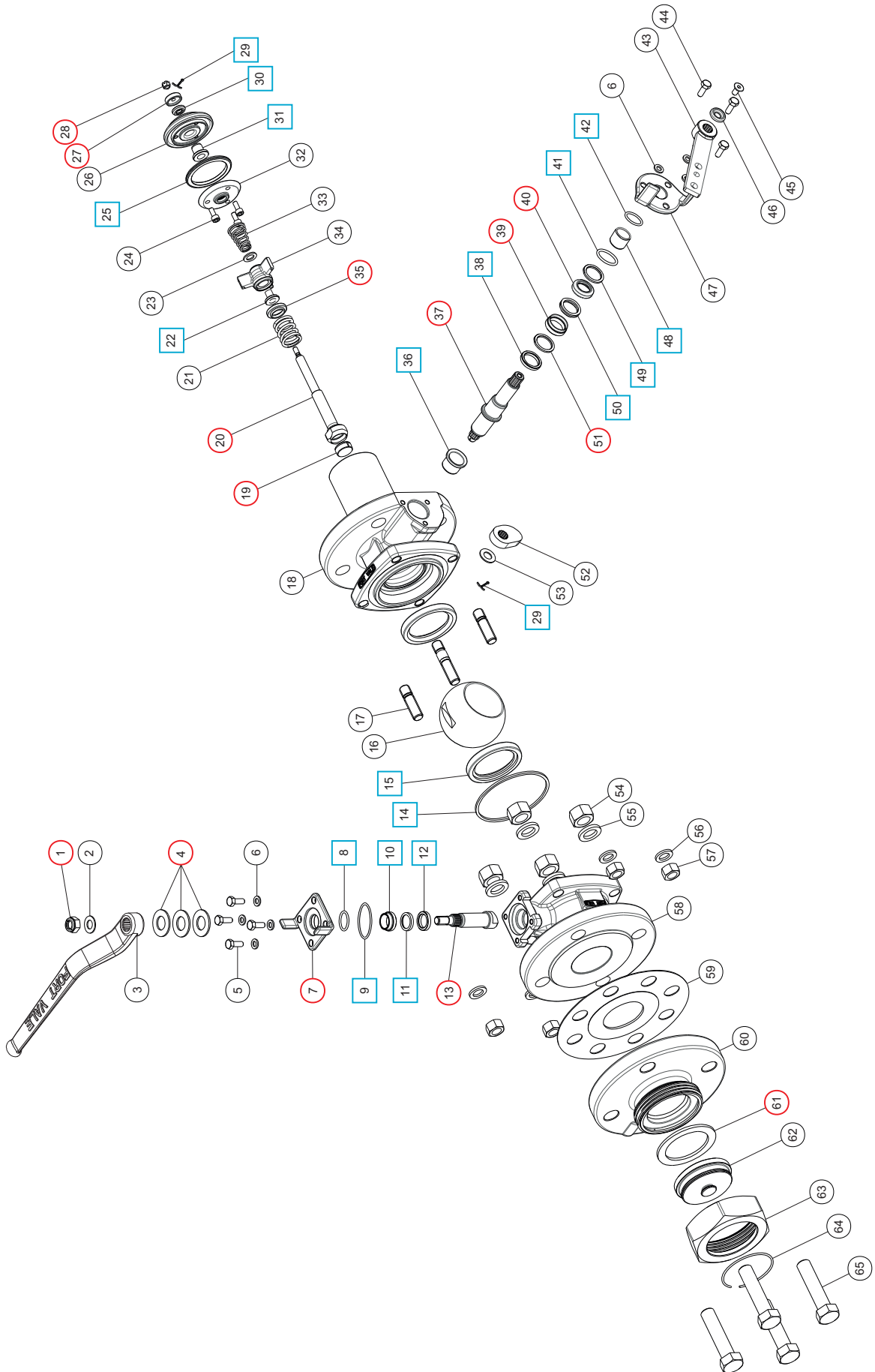
Range

Description	Part No.
Liquid phase valve, 3/4" ACME outlet, left hand operation	802B/0010L
Vapour phase valve, 1 3/4" ACME outlet, right hand operation	802B/0010R

Section View: Liquid Phase



Parts Drawing: Liquid Phase



Parts List

Item	Description	Part No.	
1	M10 locking nut	5112-008	●
2	M10 washer	5113-009	
3	Handle	370/3306	
4	Disc spring (3)	5113-038	●
5	M6 hex head bolt (4)	5111-022	
6	M6 spring washer (4)	5113-008	
7	Clamp plate	370/3305B	●
8	Neoprene O ring	5005-216	■ ●
9	Neoprene O ring	5005-866N	■ ●
10	Spindle bush	370/3307B	■ ●
11	Spindle seal	359/2007	■ ●
12	Bottom bush	370/3321	■ ●
13	Spindle	370/3320	●
14	Body seal	370/3303	■ ●
15	PTFE ball seal (2)	370/3302	■ ●
16	50mm ball	370/3301	
17	M12 stud (4)	370/3314	
18	Footvalve body: LH liquid phase	252/5065L	
	Footvalve body: RH vapour phase	252/5065R	
19	RTFE bearing pad	252/0580	○
20	Push stem	252/0525/1	○
21	Poppet spring	5104-826	
22	Push stem guide bush	252/0565	□ ○
23	Spring location washer	252/0511	
24	M5 sockethead capscrew (3)	5111-118	
25	PTFE main seal	252/0563	□ ○
26	Poppet head	252/0586	
27	Pilot seal retainer	252/0579/1	○
28	M6 castle nut	5112-094	○
29	Split pin (2)	5118-055	□ ○
30	Pilot seal	252/0583	□ ○
31	Spindle guide bush	252/0589	□ ○
32	Seal clamp	252/0588	
33	Liquid phase spring	5104-824L	
	Gas phase spring	5104-821G	
34	Spider stem guide	252/3165	
35	Bottom spring pad	252/0526	○
36	Bottom guide bush	252/0506B	□ ○
37	Spindle	252/0504	○
38	Bottom stem seal	359/4007	□ ○
39	Spacer ring	252/0512	○
40	Top seal bush	252/0507	○
41	Neoprene O ring	5005-217	□ ○
42	Neoprene O ring	5005-216	□ ○
43	Handle assembly	252/3520	
44	M6 hex head bolt (3)	5111-022	
45	M6 countersunk screw	5111-018	
46	Retaining washer	20370	

Parts List

Item	Description	Part No.	
47	Stuffing plate	252/5058B	
48	Split bearing	252/0517	□ ○
49	Top guide bush	252/0502B	□ ○
50	Top gland seal	359/4013	□ ○
51	Spacer ring	359/4012	○
52	Operating cam	252/0527	
53	M10 washer	5113-009	
54	M16 full nut (4)	5112-003	
55	M16 spring washer (4)	5113-012	
56	M12 spring washer (4)	5113-010	
57	M12 full nut (4)	5112-006	
58	Ball valve body	370/3368	
59	CNAF/PTFE gasket	5005-726	
60	Outlet: 3¼" ACME	252/2069	
	Outlet: 1¾" ACME	252/2084	
61	PTFE seal: 3¼" ACME	5005-877	●
	PTFE seal: 1¾" ACME	5005-878	●
62	Plug: 3¼" ACME	252/2076	
	Plug: 1¾" ACME	252/2086	
63	Dust cap: 3¼" ACME	252/2075	
	Dust cap: 1¾" ACME	252/2085	
64	Retaining ring clip: 3¼" ACME	5120-027	
	Retaining ring clip: 1¾" ACME	5120-028	
65	M16 hex head bolt (4)	5111-090	

Seal Kit

Description	Part No.
Ball valve seal kit: All parts marked ■ in the Parts List	370/33SKB
Footvalve seal kit: All parts marked □ in the Parts List	252/50SKB

NOTE: The seal kits are compatible with liquid phase and vapour phase valves

Repair Kit

Description	Part No.
Ball valve repair kit: All parts marked ● in the Parts List	370/33RKB
Footvalve repair kit: All parts marked ○ in the Parts List	252/50RKB

NOTE: The repair kits are compatible with liquid phase and vapour phase valves