



Specification

Nominal size/body angle

40mm to 20mm / 90°

Inlet connection

Flanged: 6 x 14mm holes on a 114.3mm PCD

Properties

40mm footvalve with Ø20mm extended outlet tube with ¾" firesafe sample ball valve and check cap. Assembly length: 567mm

Options

Different assembly lengths available, contact Fort Vale

Materials

Contact parts: 316 stainless steel

Main seal footvalve: Viton

Alternatives are available, please refer to Fort Vale

Design Conditions

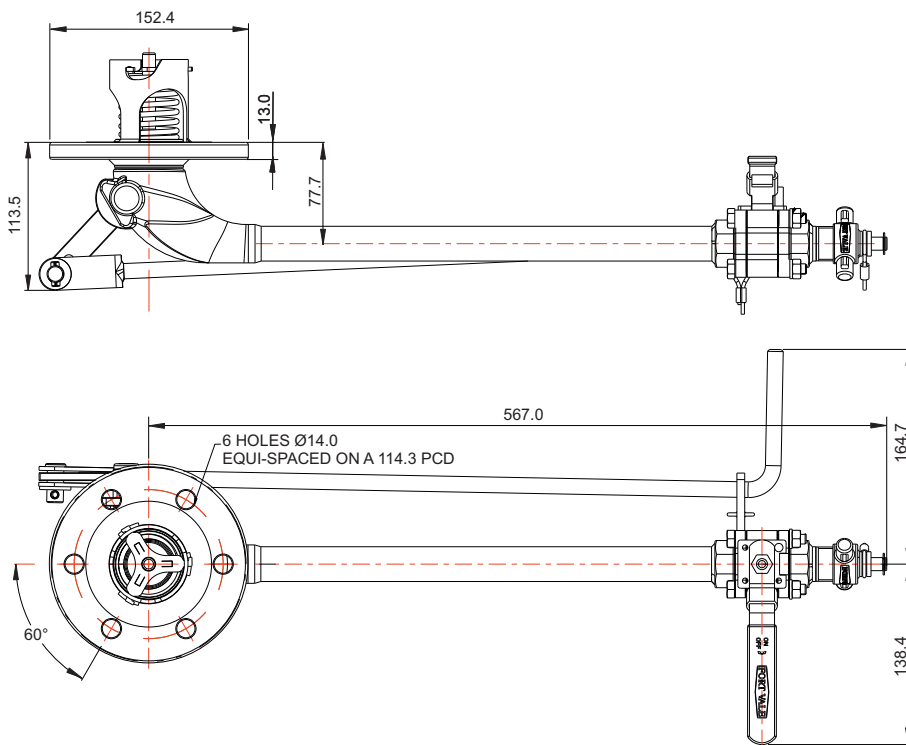
Weight:	8.2 Kg
Design Pressure (MAWP):	4 Bar
Test Pressure:	6 Bar
Design Temperature Min:	-20°C
Design Temperature Max:	125°C

NOTE: The Design Conditions and Section View dimensions are for the specified part number only.

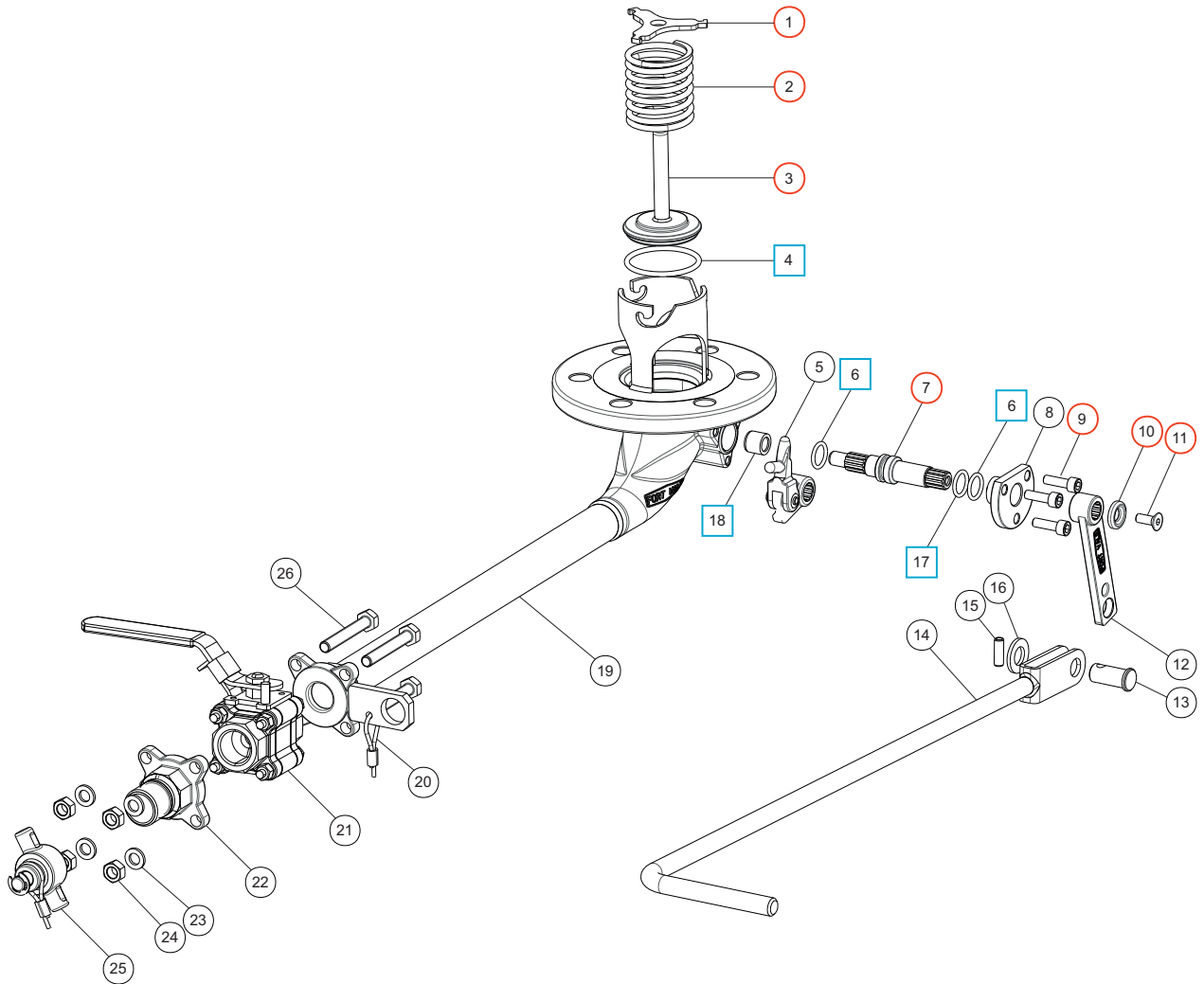
Related Parts

Description	Part No.
Weld-in flange	20594/T
Stud kit	290/1300
CNAF/PTFE inlet gasket	5005-050

Section View



Parts Drawing





1½"/¾" 90° Sampling Valve Assembly: Offshore

Part No: 338/2800

Parts List

Item	Description	Part No.	
1	Bayonet cap	338/2153	○
2	Spring	5104-718	○
3	Poppet	337/0010AF	○
4	Viton O ring	5005-172	□ ○
5	Crank block	821/0050	
	Lifting finger	821/0049	
	Pivot pin	821/0034	
	Washer	5113-015	
6	PTFE O ring (2)	20363	□ ○
7	Crank shaft	821/0013	○
8	Stuffing clamp	324/1004	
9	M6 socket capscrew (3)	5111-017	○
10	Retaining washer	20370	○
11	M6 countersunk bolt	5111-030	○
12	Splined handle	338/2801	
13	Linkage pin	S0346/4	
14	Handle	290/1032	
15	Seloc pin	5118-001	
16	M2 washer	5123-003	
17	Viton O ring	20361	□ ○
18	PTFE spindle bush	20360	□ ○
19	Extended body assembly * Note	338/2100A	
20	Wire assembly (2)	425/0009	
21	¾" BSP firesafe ball valve	410/500F	
22	¾" BSP outlet	338/2106	
23	M8 flat washer (4)	5113-003	
24	M8 full nut (4)	5112-001	
25	¾" BSP check cap	10306CK	
26	M8 hex head bolt (4)	5111-101	

NOTE: The valve specification changes the Part No.

Seal Kit

Description	Part No.
All parts marked □ in the Parts List	338/00SK

Repair Kit

Description	Part No.
All parts marked ○ in the Parts List	338/00RK