



Specification

Nominal size

DN100

Inlet/hose connection

Flanged: 8 x M10 holes on a 149.2mm PCD - 4" TTMA

Outlet/coupler connection

Flanged: 8 x 11mm holes on a 149.2mm PCD - 4" TTMA

Spring pressure

0.13 Bar, 0.2 Bar, 0.3 Bar, 0.4 Bar

Options

Poppet with fluid transfer hole or poppet with check valve

Materials

Contact parts: aluminium & stainless steel

Main seal: A range is available, refer to Seal Data

Design Conditions

Weight:	2.7 Kg
Design Pressure (MAWP):	6 Bar
Test Pressure:	9 Bar
Design Temperature Max:	Refer to Seal Data

Seal Data

Seal Material	Seal Temp Min/Max
Viton B	-13°C / 50°C
Viton GFLT-S	-23°C / 50°C
Ultra low temp. fluorocarbon	-40°C / 50°C

NOTE: The Design Conditions and Section View dimensions are for the specified part number only.

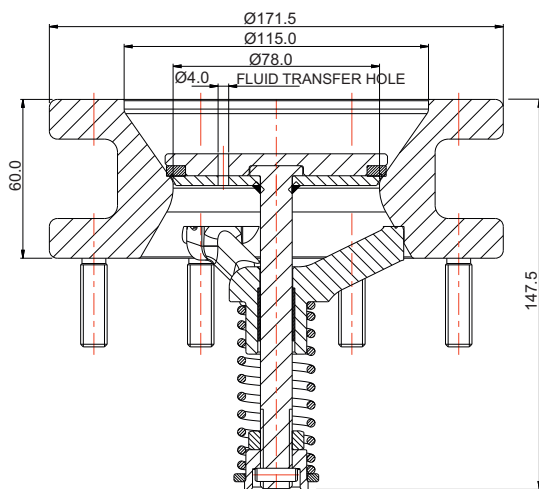
Range

Description	Part No.
Poppet with fluid transfer hole *Note	94/3690XX/X
Poppet with check valve *Note	94/3660XX/X

NOTE: The valve specification changes the Part No.

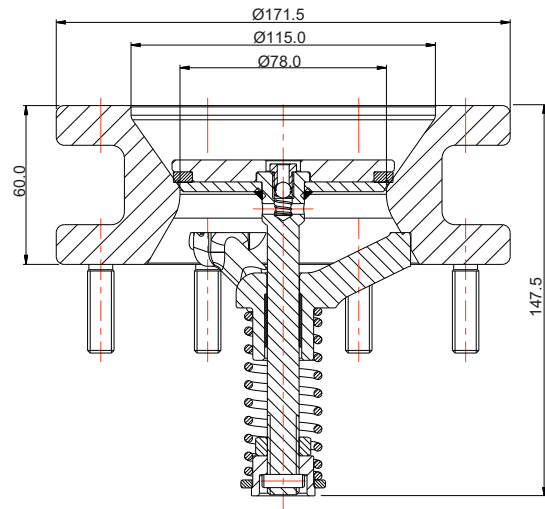
Section View

Part No. 94/3690XX/X



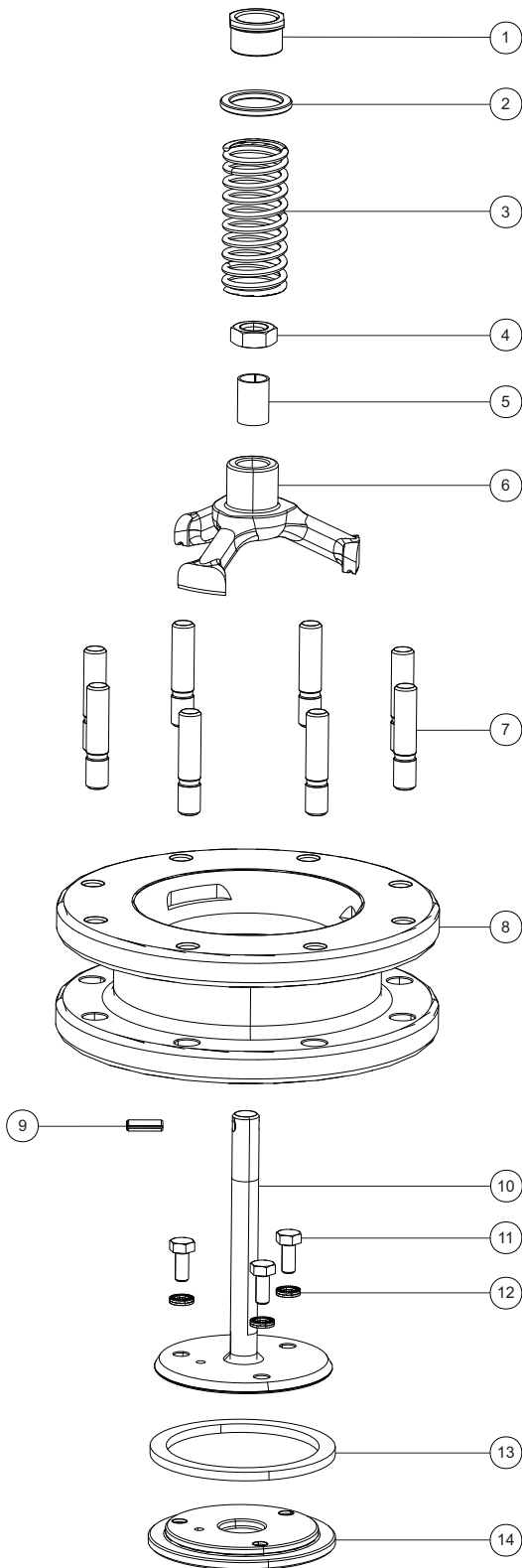
Section View

Part No. 94/3660XX/X



Parts Drawing

Part No. 94/3690XX/X ONLY



Parts List

Part No. 94/3690XX/X ONLY

Item	Description	Part No.
1	Spindle stop collar	94/3684
2	Spindle spring washer	94/3681
3	Poppet spring *Note	94/3674/X
4	M12 half nut	5112-017
5	Spider bearing	94/3688
6	Spider	94/3687
7	M10 stud (8)	94/1040
8	Body	94/3693
9	5mm roll pin	5128-122
10	Poppet	94/37XX
11	M6 hex bolt (3)	5111-190
12	M6 Nord Lock washer pair (3)	5113-180
13	Poppet seal *Note	94/3696X
14	Poppet base plate	94/3710

NOTE: The valve specification changes the Part No.