

3" 45° Cleanflow Footvalve - inlet flange drilled 8 x 14mm holes equi-spaced on a 178mm PCD; outlet flange drilling as shown below. Footvalve body with "Superseat" (alloy 625) seating area. Steam-heating chamber with 1/2" BSP connections. Conical poppet fitted with a Fortyt O ring. All other contact parts are manufactured in 316 stainless steel.

Options - available with flat closure plate. Other materials are available for the seating area. Alternative seal materials are available. Version with pneumatic actuator. The Cleanflow range includes 30°, 45°, 90° and 180° options. A range of bolting kits and outlet gaskets is available.

**Specification**

Weight	10.3 Kg <b>*See Note</b>
Design Pressure (MAWP)	4 Bar (58 PSI)
Test Pressure	6 Bar (87 PSI)
Steam Chamber MAWP	10 Bar (145 PSI)
Design Temperature	-40°C to 200°C (-40°F to 392°F)

**\*Note** Weight and dimensions vary according to valve specification.

Design approval by Lloyds Register of Shipping.

Approved to BS EN14433.

**i** Operating Instructions available - OPIN28 & OPIN47

**Range**

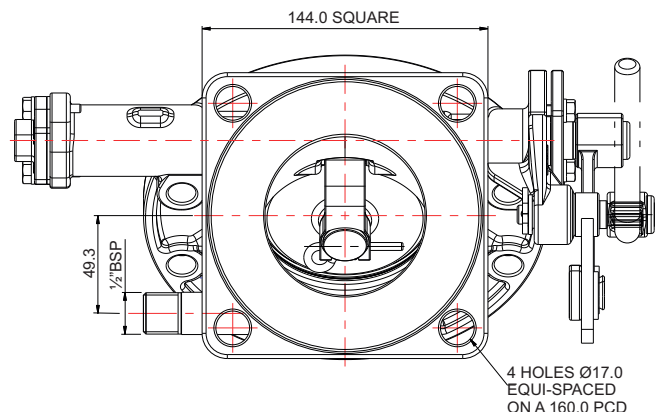
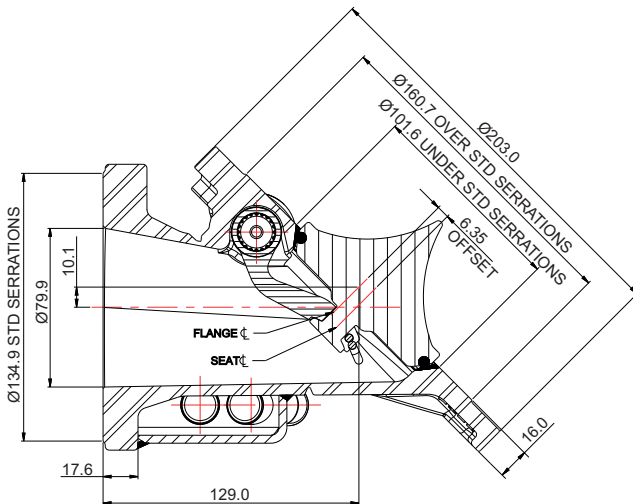
Part No.	Description
845/1260ASH	Steam-heated, conical poppet, Fortyt seal
845/1240ASH	Steam-heated, flat poppet, PFA seal
845/1260ASSHT	Steam-heated, conical poppet, hi-temp seals, pneumatic actuator

**Associated Parts**

Associated Parts	Part No.
Steam-heated tank weld-in flange	324/90SH
Stud kit	845/2040
Bolting kit – 4 hole outlet	311/3500
Inlet gasket – 8 hole	5005-015
Outlet gasket for clamped butterfly valve	5005-049

**Fitting Details**

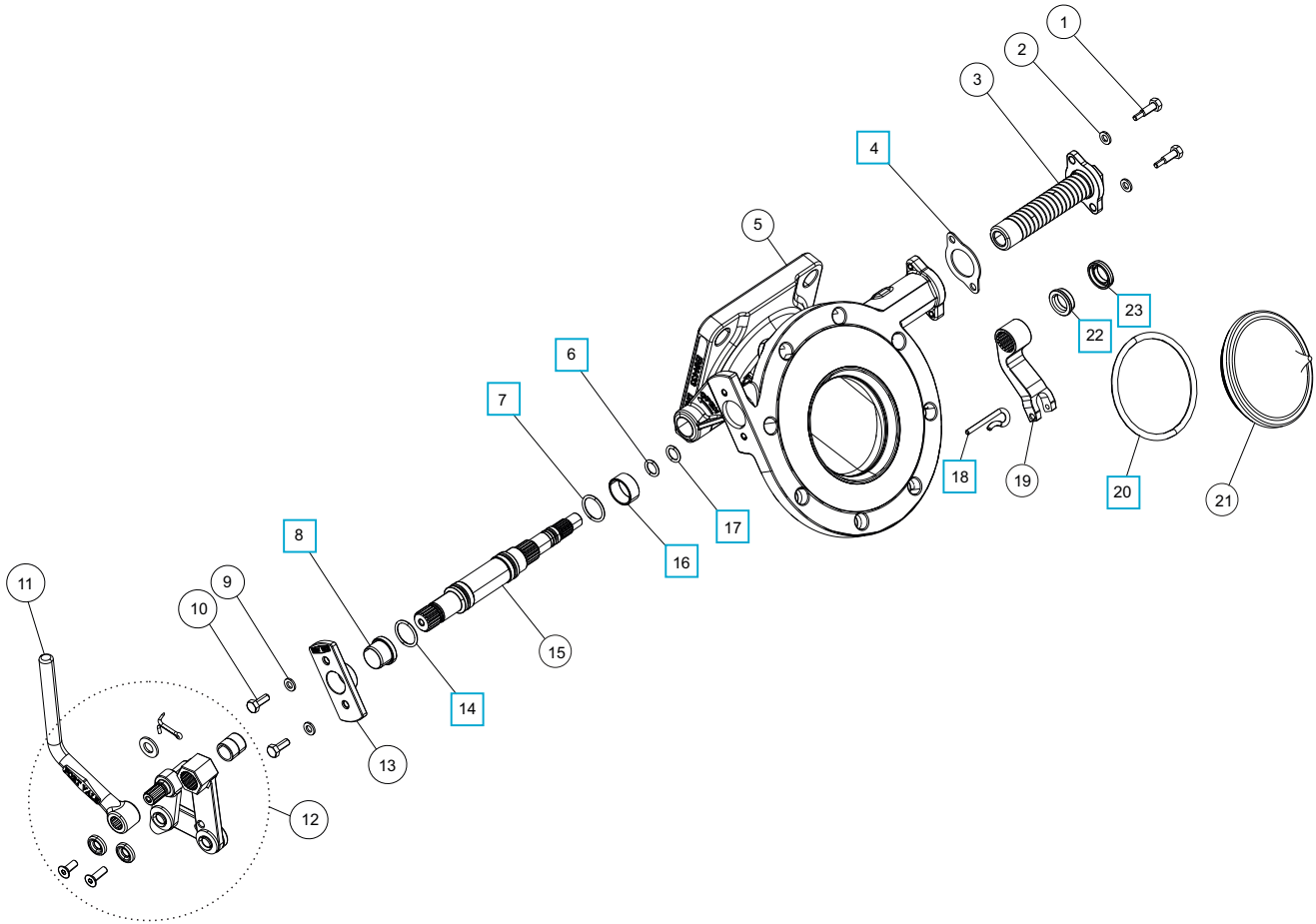
Part number: 845/1260ASH



Parts drawing



Part number: 845/1260ASH



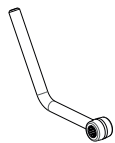
Item	Description	Part No.
1	M6 hex bolt (2)	845/0017
2	M6 spring washer (2)	5113-008
3	Spring assembly	845/0050
4	Spring housing gasket	5005-845 <input type="checkbox"/>
5	Body with steam chamber	845/1810B
6	PTFE O ring	5005-008 <input type="checkbox"/>
7	Perlast O ring	5005-384 <input type="checkbox"/>
8	Stuffing seal	845/0061 <input type="checkbox"/>
9	M6 spring washer (2)	5113-008
10	M6 x 16mm hex bolt (2)	5111-022
11	Handle *See Note below	324/8670
12	Handle linkage assembly	324/8910

Item	Description	Part No.
13	Stuffing clamp flange	845/0016
14	Viton O ring	5005-336 <input type="checkbox"/>
15	Spindle	845/0200
16	Spindle bearing	845/0062 <input type="checkbox"/>
17	Perlast O ring	10133PHT <input type="checkbox"/>
18	Retaining pin	845/0015 <input type="checkbox"/>
19	Lifting fork	845/0010
20	Fortyt O ring	5005-104 <input type="checkbox"/>
21	Congealing cargo poppet	845/0045
22	Seal energizer	845/0063 <input type="checkbox"/>
23	Bush seal	845/0064 <input type="checkbox"/>

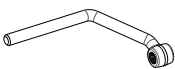
**Note:** Please specify the style of handle required at the time of order.

**SEAL KIT**

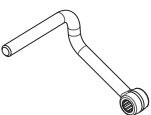
Part number **845/00SK** contains all parts marked



**STANDARD CLEANFLOW HANDLE**  
Part No. 324/8670



**STANDARD HIGHLIFT HANDLES**  
Part No. 330/5010



Part No. 324/8671



**SELF ADHESIVE DECAL**

Part No. 845/0320  
Text in English, German & French