

Safeload Balance Mechanism Assembly



The balance mechanism is manufactured in stainless steel which ensures excellent corrosion resistance and inherent strength and durability.

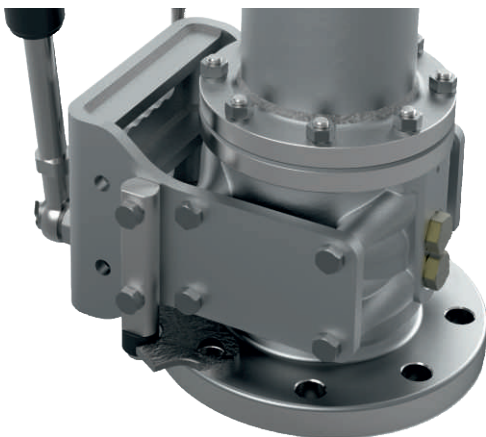
Balance adjustment is controlled by gas springs, which are considered a safer and more reliable option than compression springs. A limiter bolt is incorporated as a failsafe to protect the loading arm from damage in the unlikely event of gas spring de-pressurisation.

For ultimate installation flexibility, the balance mechanism can be configured to suit a top or bottom fuel supply as well as left or right orientation.

Please see below for details about Safeload swivel assemblies.

Part Number : 94/7000XXX

Safeload Base Swivel Assembly



Base swivel shown fitted with optional "swivel stop" device.

The base swivel assembly incorporates a superior 3-seal and dual needle/dual ball race bearing combination for maximum axial and radial strength and performance.

The primary seal is available in Viton (FKM) B, Viton (FKM) GFLT, low temperature fluorocarbon or spring-energised PTFE, depending on service conditions. PTFE secondary and tertiary seals protect the swivel mechanism from dirt ingress, ensuring a long-lasting and hard-working installation.

An optional "swivel stop" device is available separately which prevents radial over-rotation and collision with adjacent loading arms.

An integral earth system ensures electrical continuity, eliminating the need for separate earth wiring.

Part Number : 94/7015XX

Safeload Intermediary Swivel & Coupler Swivel



As a superior safety feature, all swivels contain an integral earth system, unique to the Safeload design, that ensures electrical continuity and eliminates the need for separate earth wiring.

Intermediate and coupler swivels are available in stainless steel or aluminium with a choice of primary seal materials. A variety of spools and drop hoses are available.

All swivel/pipework flanges have industry standard drilling patterns to be compatible with existing terminal installations.

Intermediate Swivel Part Number

Stainless steel - 94/7125XX

Aluminium - 94/7025XX

Coupler Swivel Part Number

Stainless steel - 94/7120XX

Aluminium - 94/7020XX