

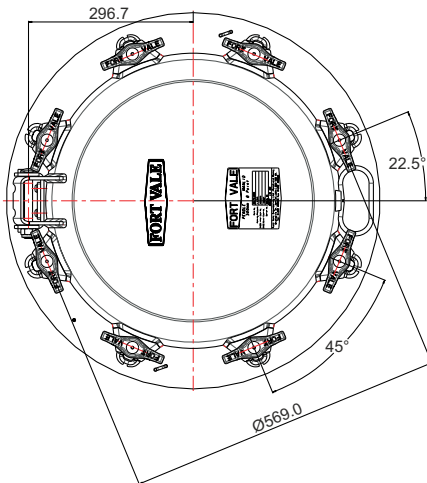
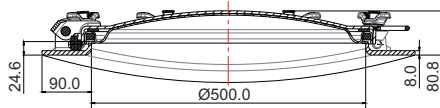


500mm Ultra Low Profile Manlid Assembly - 8 point fastening. 8mm thick pressed neck/compensating ring profiled to suit tank radius. Contact parts manufactured in 316 stainless steel. Stainless steel swingbolts with naval brass handnuts. Seal supplied separately.

Options - 3 Bar 6 point version and 4 Bar 8 point version. Tank radius range from 750mm to 1300mm. Stainless steel swingbolts with either stainless steel handnuts or low profile stainless steel/brass composite handnuts. Cover hinge stop plate may be fitted to adjust opening angle.

Fitting Details

Example shown : E4C/85XX025B



Specification

Weight	40 Kg
Design Pressure (MAWP)	4 Bar (58 PSI)
Test Pressure	6 Bar (87 PSI)
Design Temperature	-40°C to 200°C -40°F to 392°F

NB Above data varies according to specification

Manlid covers 74E/0500 (4 Bar) & 73E/0500 (3 Bar) are approved to BS EN14025.

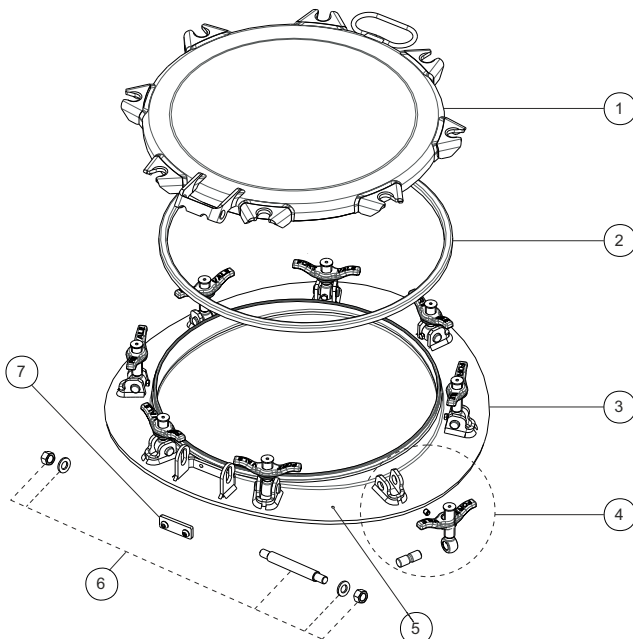
Range

Part Number	Points	MAWP
E4C/85XX025B	8	4 Bar
E3C/65XX025B	6	3 Bar

XX in part number above denotes the radius range:-

75 = 750 to 800mm	04 = 1005 to 1075mm
82 = 800 to 850mm	11 = 1075 to 1145mm
87 = 850 to 900mm	18 = 1145 to 1220mm
92 = 900 to 950mm	20 = 1220 to 1300mm
97 = 950 to 1005mm	28 = 1280mm

Parts drawing



Item	Description	Part No.
1	Cover	74E/0500
2	Seal (sold separately)	See DS/MAN028
3	Neck/compensating ring	6EP/7403XXXXP
4	Long swingbolt assembly (4)	496/XXXX see Note
	Short swingbolt assembly (4)	496/X240 see Note
5	Grubscrew	5111-009
6	Hinge pin assembly	600/1060
7	Hinge kit – 135° fixed	135B

Note

496/X in swingbolt part number denotes handnut material

- 1** = naval brass
- 5** = stainless steel
- E** = low profile stainless steel/brass composite

496/XXXX - long swingbolt length depends upon tank radius.