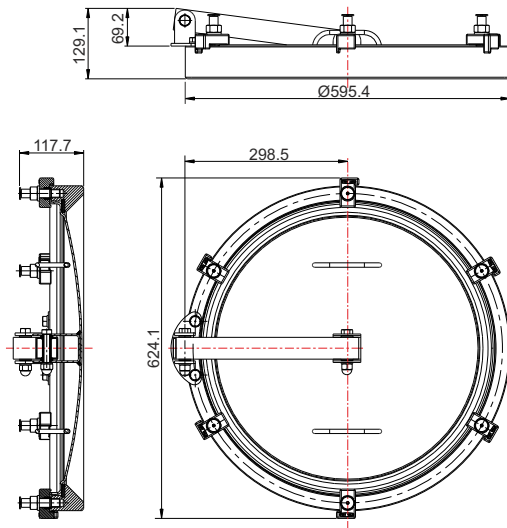




500mm Side Entry Manlid Assembly - suitable for Milk Tankers. Cover with cross arm and 6 point fastening with clamp system. 60mm deep neckring. Contact parts manufactured in 304 stainless steel. Fitted with a sweet white rubber seal. (FDA compliant)

Fitting Details

Part Number : 850/3500

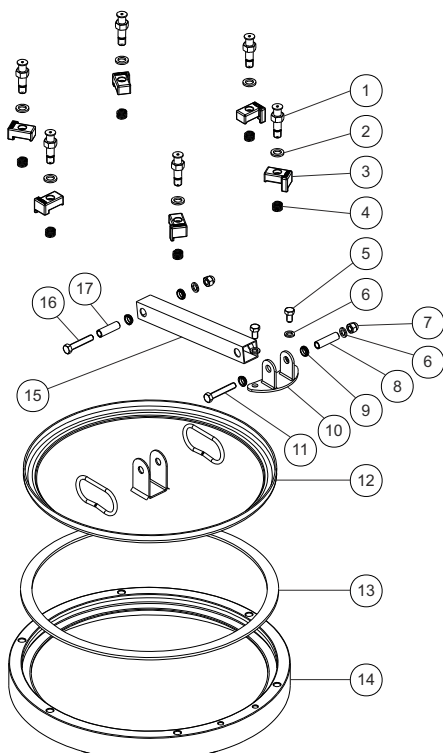


Specification

Weight	36.8 Kg
Design Pressure (MAWP)	0.5 Bar (7.25 PSI)
Test Pressure	0.75 Bar (10.9 PSI)
Design Vacuum	-0.62 Bar (460mmHg)
Test Vacuum	-0.68 Bar (510mmHg)
Design Temperature	-20°C to +85°C (-4°F to +185°F)

Bolt torque 20 Nm

Parts drawing



Item	Description	Part No.
1	Stud assembly (6)	850/3501
2	Spring washer (6)	5113-012
3	Clamp bracket (6)	760/0033
4	Lug spring (6)	5104-785
5	Hex bolt (2)	5111-021
6	Spring washer (4)	5113-010
7	Dome nut (2)	5112-050
8	Spacer tube	677/0034/1
9	Brass bush (4)	677/0035
10	Hinge assembly	677/0039
11	Hex bolt	5111-164
12	Manlid weld assembly	760/0030
13	Sweet white rubber seal	760/0031
14	Neckring	677/0045
15	Hinge arm	760/0032
16	Hex bolt	5111-098
17	Spacer tube	677/0034