



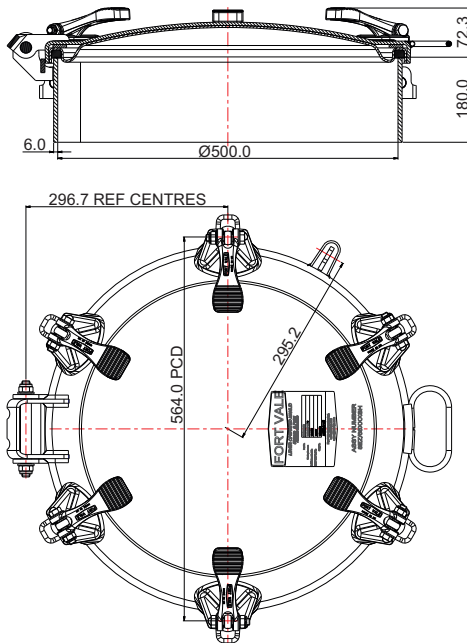
500mm Manlid Assembly with Quick Release Latches - pressed 6 point fastening cover. 6mm thick x 180mm deep neckring. Contact parts manufactured in 316 stainless steel. Fitted with stainless steel quick release latches. Seal supplied separately.

Options - 100mm, 125mm, 150mm, 180mm deep neckrings. Manlid may be supplied with welded ancillary items, eg. RJT fitting. Insulated manlid available.

Available etched with customer logo upon request.

Fitting Details

Example shown : 8EZ/66XXXSH



Specification

Weight	40.5 Kg *See Note
Design Pressure (MAWP)	2.50 Bar (36.3 PSIG)
Test Pressure	3.25 Bar (47.1 PSIG)
Design Temperature	-20°C to 150°C (-4°F to 302°F)

*Note : varies according to specification.

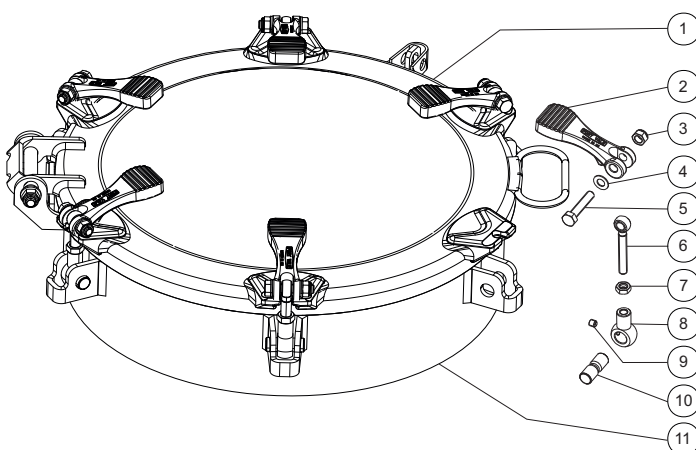
Approved to BS EN14025

 Operating Instructions available - OPIN64

Range

Part No.	Description
8EZ/66XXXSH	Standard assembly
8EZ/67XXXSH	Assembly with RJT fitting in manlid cover
8EZ/68XXXSH	Assembly with insulated manlid cover

Parts drawing



Item	Description	Part No.
1	Manlid cover	73E/7200
2	Quick release handle (6)	490/4000
3	M10 self locking nut (6)	5112-008
4	M10 washer (12)	5113-009
5	M10 hex head bolt (6)	5111-110
6	M12 swingbolt (6)	86Z/0003
7	M12 half nut (6)	5112-017
8	16mm eye female swingbolt (6)	86Z/0002
9	M8 socket grubscrew (6)	5111-002
10	16mm swingbolt pin (6)	10913SS
11	Neckring *See Note	66E/66XXXSH

*Note Part number varies according to specification.

Quick release swingbolt assembly part number **86Z/0001** includes items 2-10.

16 x 10mm section Manlid seal supplied separately - part number 5005-50XXX (various materials available)