

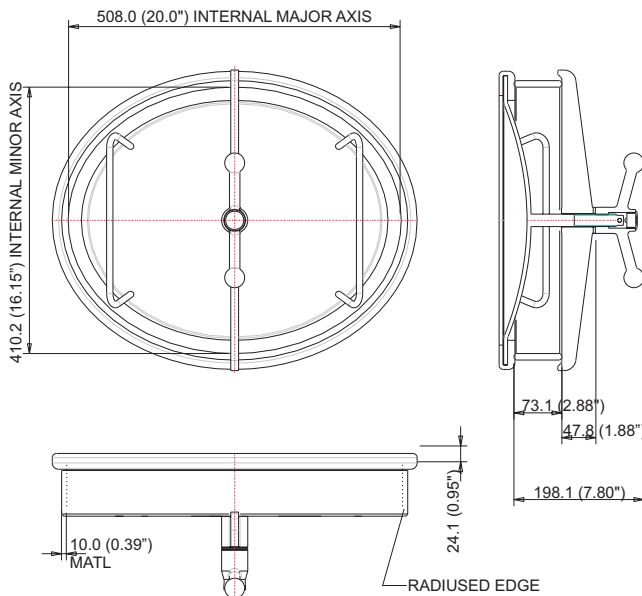


Internal Oval Manlid Assembly - opens into the tank vessel. The manlid is operated using a double arm lever and incorporates a cross arm to clamp and seal the cover on closure. Internal tank pressure enhances sealing performance. Manufactured in 316 stainless steel, internal surfaces polished to 180 grit. Fitted with sweet white rubber seal as standard.

Optional extras - hand polishing and other seal materials available on request. Range of neckring depths available from 60mm.

Fitting Details

Example shown : 850/7000



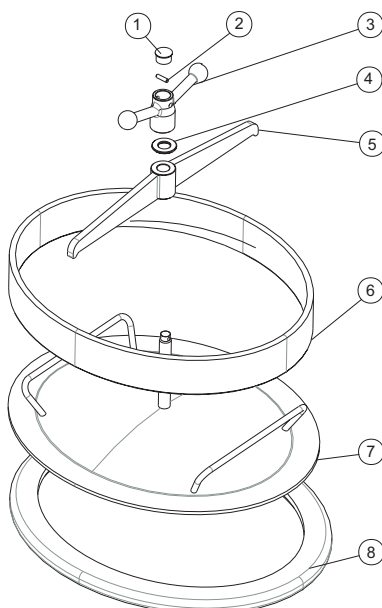
Specification

Weight	23.5 Kg
Design Pressure (MAWP)	3 Bar (43.5 PSI)
Test Pressure	4.5 Bar (65.25 PSI)
Vacuum Conditions	Suitable for 0.21 mbar (6" Hg)
Design Temperature	100°C (212°F)

Range

Part No.	Description
850/7000	Internal Oval Manlid Assembly
850/0000	Low Profile In Only Oval Manlid Assembly
850/1000	Low Profile In-Out Oval Manlid Assembly
850/6000	Standard In-Out Oval Manlid Assembly

Parts drawing



Item	Description	Part No.
1	Cap	750/6015
2	Retaining pin	750/6035
3	Handnut assembly	750/6030
4	Thrust bearing	750/6003
5	Cross arm	750/6020
6	Neckring	650/6012
7	Lid assembly	750/6010
8	Sweet white rubber seal	750/60SWR