



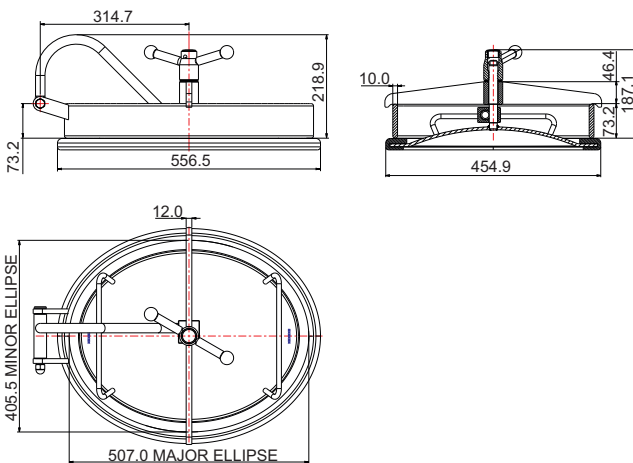
In/Out Oval Manlid Assembly - 405.5 x 507mm assembly with 73.2mm deep x 10mm thick neckring. Contact parts manufactured in 316 stainless steel polished to 180 grit. Fitted with sweet white rubber seal as standard.

The manlid is operated using a double arm handnut and incorporates a cross arm to clamp and seal the cover on closure. Internal tank pressure enhances sealing performance. The cover opens into the vessel and may be rotated to swing out through the manway, clear of the neckring. Handling bars are attached to assist operation.

Options - hand polishing and other seal materials are available on request. Neckrings range from 73-200mm deep. Sampling point may be incorporated. 304 stainless steel contact parts.

Fitting Details

Example shown : 850/6000XXX



Specification

Weight 23 Kg *See Note
 Design Pressure (MAWP) 3 Bar (43.5 PSI)
 Design Temperature -40°C to 150°C
 -40°F to 302°F

Suitable for 0.21 mbar (6"Hg) vacuum conditions, assuming neckring/vessel weld distortion is minimal.

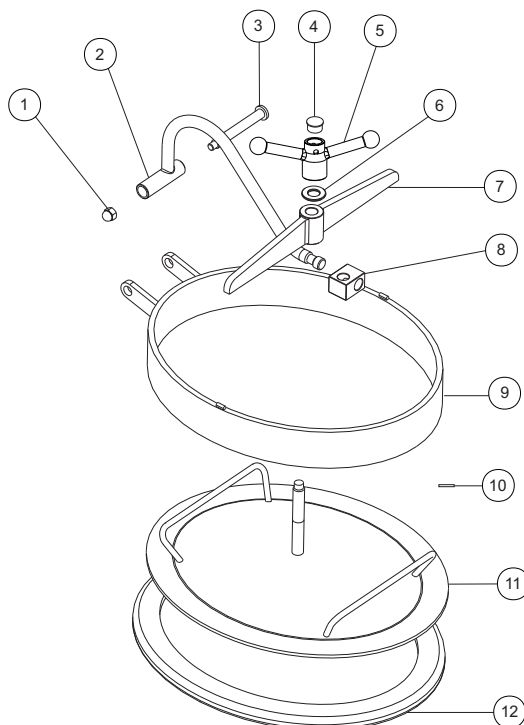
Note : Weight will vary according to specification.

Range

Part No.	Description
850/6000XXX	316 st/st 73.2mm deep neck
850/6000304XXX	304 st/st 73.2mm deep neck
850/6200XXX	316 st/st 200mm deep neck
850/6200304XXX	304 st/st 200mm deep neck

"XXX" indicates variable seal material.

Parts Drawing



Item	Description	Part No.
1	M12 dome nut	5112-050
2	Pivot beam assembly	650/6020
3	Hinge pin	650/6002
4	Cap	750/6015
5	Handnut	750/6030
6	Thrust bearing	750/6003
7	Cross arm	750/6020
8	Pivot block	750/6001
9	Neckring	650/6010
10	Retaining pin	750/6035
11	Lid assembly	750/6010
12	Sweet white rubber seal	750/60XXX