



## Specification

**Nominal size**  
DN80

**Tank connection**

Flanged: 4 slots equi-spaced on a 145.0/152.4 min/max PCD. 1/4" BSP gauge connection  
Refer to Flange Drilling & Accessory Parts

**Set pressure**

From 5.5 Bar to 14.3 Bar

**Materials**

Contact parts: 316 stainless steel  
Pressure O ring: Fortyt

Alternatives are available, refer to the Design Options page

## Design Conditions

Weight: 6.6 to 10.4 Kg **NOTE**

**NOTE:** The valve specification changes the weight and the design conditions. Please contact Fort Vale for more information.

**Approval**

Design Approval by Lloyds Register of Shipping

**WARNING:** If you install an approved relief valve accessory item, e.g. a flame arrester, cowl, burst disc or baffle, it will decrease the air flow capacity of the relief valve. Thus, you must calculate again to make sure that the decreased air flow capacity will give sufficient protection to your vessel/system. Please refer to Fort Vale for more information.

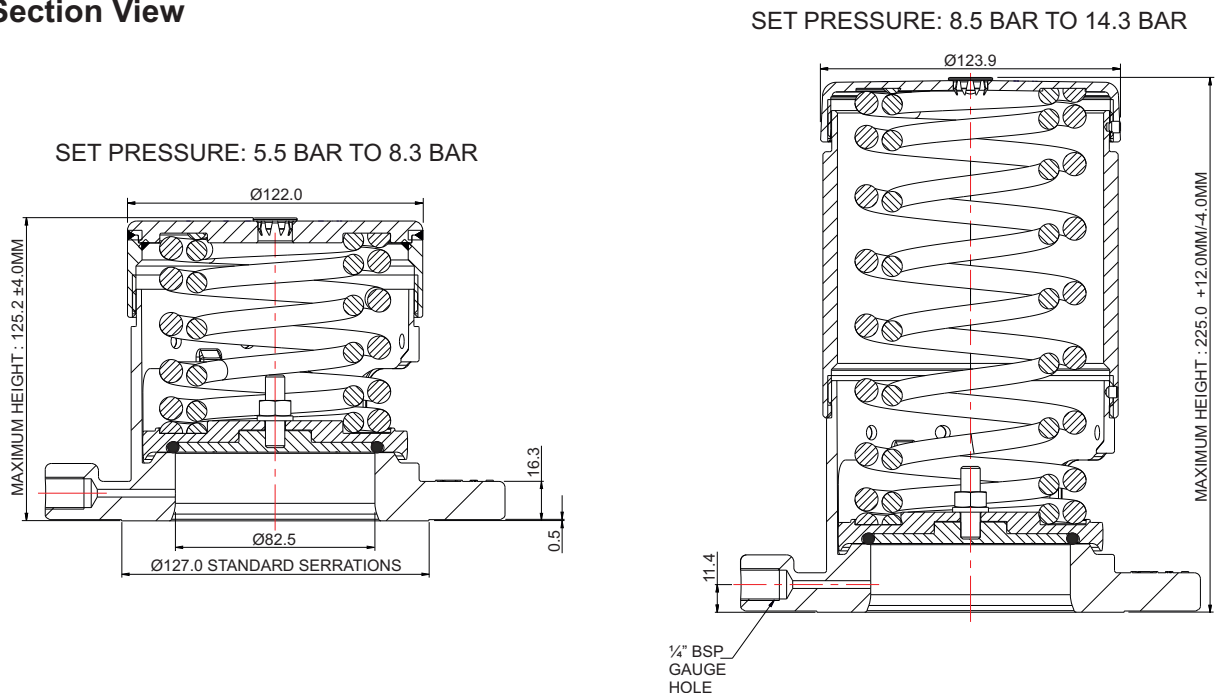
## Flange Drilling & Accessory Parts

Drilling Spec.	PCD mm	Weld-in flange	Gasket
DIN65 PN10	145.0	176/3250	5005-332
3" Table D	146.1	176/3140	5005-013
DIN80 PN6	150.0	176/3158	5005-334
3" ASA 150	152.4	176/3125	5005-204

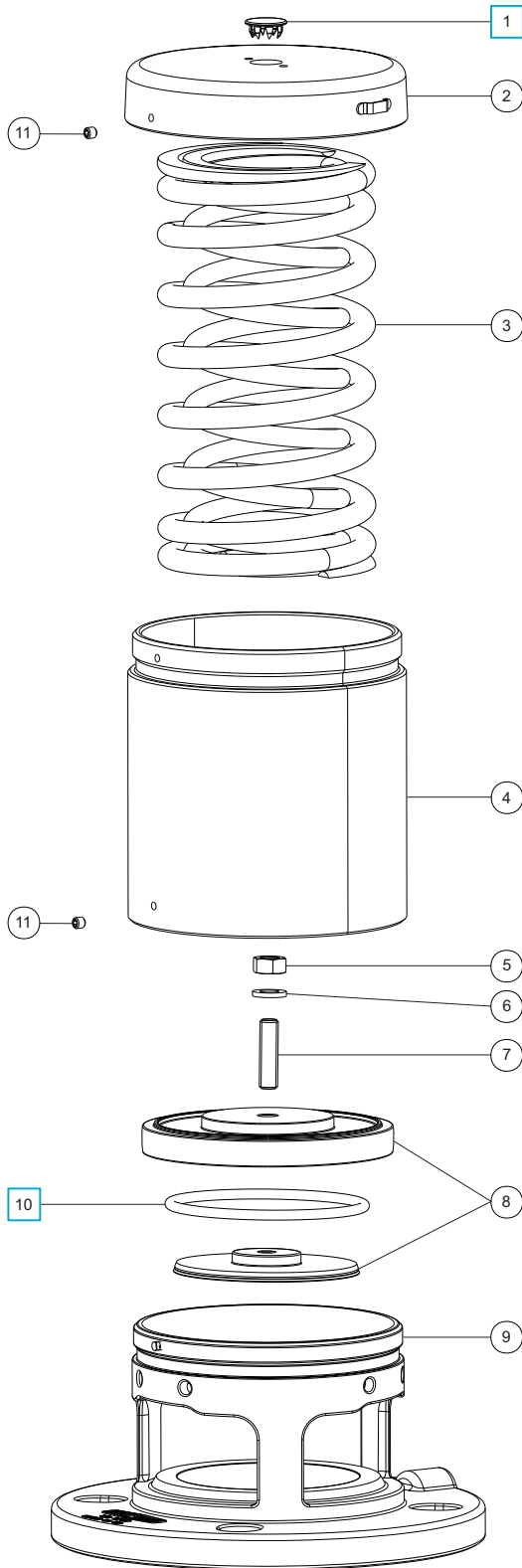
## Related Parts

Description	Part No.
0-20 Bar pressure gauge, brass internal parts	921/20BBS
Flame arrester <b>*Warning</b>	176/2920
M16 stud kit: 150 & 152.4 PCD	311/3700
M16 cap screw bolt kit: 145 & 146 PCD	311/3785

## Section View



## Parts Drawing



## Parts List

Item	Description	Part No.
1	Stainless steel plug	10978 <input type="checkbox"/>
2	Top cap * <b>Note 1</b>	1860/XXXXXX
3	Spring set * <b>Note 1</b>	6104-XXXX
4	Extension tube * <b>Note 2</b>	1860/1025/X
5	Full nut	5112-001
6	Spring washer	5113-003
7	Stud	11426
8	Pressure plate assembly * <b>Note 1</b>	1860/X031XX
9	Body	1860/19SL
10	Fortyt O ring	ORB337F0 <input type="checkbox"/>
11	Anti-tamper screw (2)	5121-001

**NOTE 1:** The valve specification changes the Part No.

**NOTE 2:** Valves with a set pressure  $\geq 8.5$  Bar have an extension tube. The valve specification changes the Part No.

## Seal Kit

Description	Part No.
All parts marked <input type="checkbox"/> in the Parts List	043/1PSK