



Specification

Nominal size

DN25

Tank connection

1" BSPM

Set pressure

From 1 PSI to 45 PSI (0.07 Bar to 3.10 Bar)

Set vacuum

From 0.5"Hg to 7"Hg (0.02 Bar to 0.24 Bar)

Properties

With or without manual vent button, refer to Section View

Materials

Contact parts: 316 stainless steel

Pressure O ring: Viton

Vacuum O ring: Viton

Tank seal: PTFE

Alternatives are available, refer to the Design Options page

Design Conditions

Weight: 0.19 Kg

Seal Temperature Range:

Material	Min.Temp.°C	Max.Temp.°C
EPDM	-50	150
Perfluoroelastomer	-15	240
Viton	-20	200

NOTE: The Design Conditions and Section View dimensions are for the specified part number only.

Range

Description	Part No.
1" BSPM standard valve	65/XXXXX
1" BSPM with vent button	65B/XXXXX
1" BSPM with vent button & TIR	65BT/XXXXX
1" BSPM with vent button & ventlock	68/XXXXX
1" BSPF standard valve	66/XXXXX
1" BSPF with vent button & ventlock	69/XXXXX
1" NPT standard valve	65/XXXXXNPT

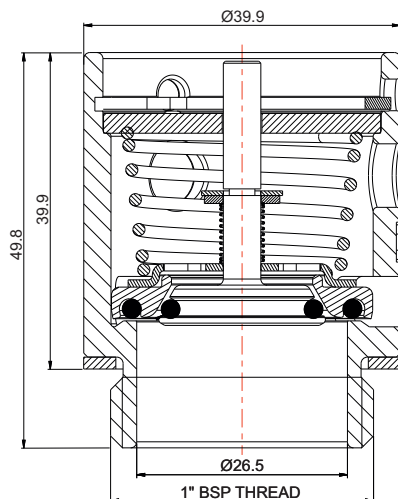
NOTE: The valve specification changes the part number

Related Parts

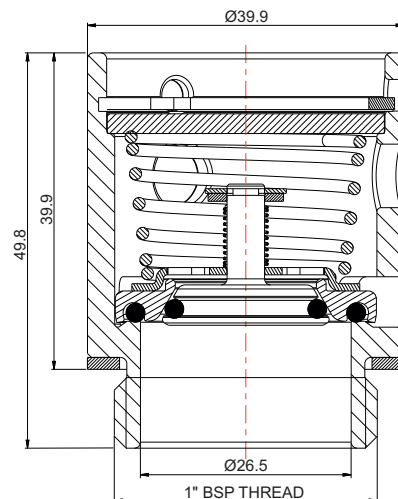
Description	Part No.
1" BSP weld-in socket	600/1025
1" BSP weld-in nipple	600/1026
1" flame arrester	179/0300

Section View

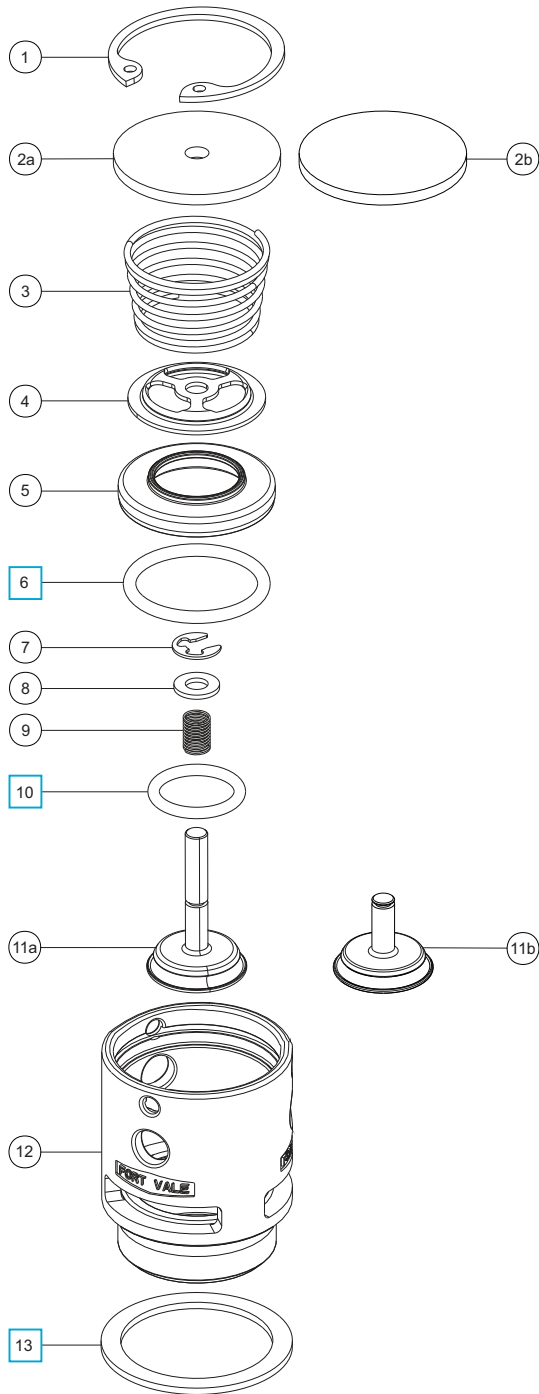
With manual Vent button: 65B/0XXXX



Without manual Vent button: 65/0XXXX



Parts Drawing



Parts List

Item	Description	Part No.
1	Retaining clip	5120-021
2a	Top cap: for vent button	179/0060
2b	Top cap: no vent button	179/0010
3	Pressure spring	Refer to Table 1
4	Poppet guide	179/0055
5	Pressure plate *Note	Refer to Table 2
6	Pressure O ring *Note	Refer to Table 2 <input type="checkbox"/>
7	Circlip	5120-002
8	Plain washer	5113-017
9	Vacuum spring	Refer to Table 3
10	Vacuum O ring	Refer to Table 4 <input type="checkbox"/>
11a	Vacuum poppet: with vent button	179/0070
11b	Vacuum poppet: no vent button	179/0020
12	Body	179/0100
13	PTFE gasket	5005-553 <input type="checkbox"/>

NOTE: You will need special tools to install an O ring into a pressure plate. We recommend that you order a pressure plate/O ring assembly. Refer to Table 2.

Table 1

Std. Pressure Settings	Pressure Spring Part No.
3 PSI (0.21 Bar)	5104-653
6 PSI (0.41 Bar)	5104-656
9 PSI (0.62 Bar)	5104-659

Available settings: 1 PSI (0.07 Bar) to 45 PSI (3.10 Bar)

Table 2 - Refer to Note

Seal Material	Pressure O Ring	Pressure Plate/O Ring Assembly
EPDM	5005-651	179/0040ES
Perfluoroelastomer	5005-585	179/0040PERS
Viton	5005-552	179/0040VS

Table 3

Std. Vacuum Setting	Vacuum Spring Part No.
1"Hg (0.03 Bar)	5104-671

Available settings: 0.5"Hg (0.02 Bar) to 7"Hg (0.24 Bar)

Table 4

Seal Material	Vacuum O ring
EPDM	5005-652
Perfluoroelastomer	5005-586
Viton	20361

Seal Kit - All parts marked in the Parts List

Seal Material	Part No.
EPDM	65/9PVSK
Perfluoroelastomer	65/7PVSK
Viton	65/0PVSK