



## Specification

### Nominal size

50mm

### Tank connection

Flanged: 6 x 11mm holes on a 104.9mm PCD

### Outlet connection

2" BSP

### Properties

With sintered disc to prevent vessel pressurisation  
Low-leak cap with secondary sintered disc and chain

### Materials

Contact parts: 316 stainless steel  
Sintered discs: 316 stainless steel  
All seals & gaskets: PTFE

Alternatives are available, refer to Range or contact Fort Vale

## Design Conditions

Weight:	5.29 Kg
Design Pressure (MAWP):	4 Bar
Design Temperature Min:	-40°C
Design Temperature Max:	150°C

**NOTE:** The Design Conditions and Section View dimensions are for the specified part number only.

### Approvals

The cap is compatible with SNCF regulations

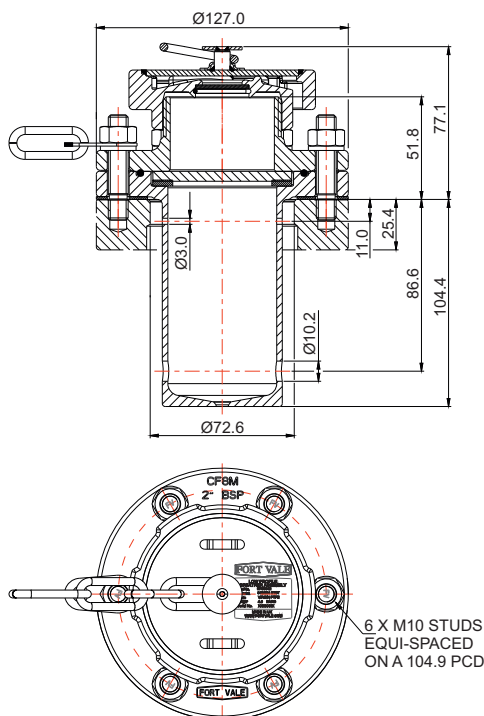
## Range

Description	Part No.
Weld-in breather vent assembly	674/3500
DIN80 PN10 flanged breather vent assy	674/3550

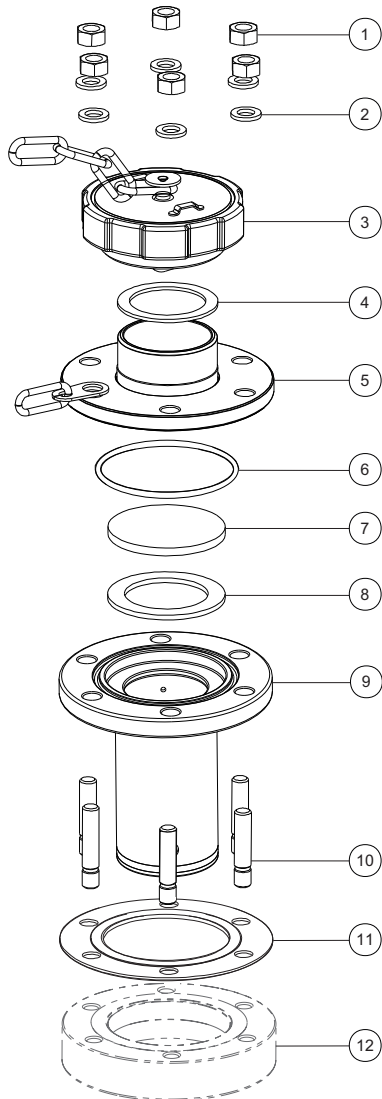
## Related Parts

Description	Part No.
Weld-in flange	176/3150

## Section View



## Parts Drawing



## Parts List

Item	Description	Part No.
1	M10 full nut (6)	5112-002
2	M10 spring washer (6)	5113-002
3	Breather cap assembly	674/3040
4	PTFE breather cap seal	5005-414
5	2" BSP outlet	674/3546
6	PTFE O ring	5005-235
7	Sintered disc	865/2000
8	PTFE breather disc seal	5005-435
9	Breather body	674/3540
10	M10 x 53mm stud (6)	371/0008-B8
11	PTFE inlet gasket	5005-398P
12	Weld-in flange (supplied separate)	176/3150