



Specification

Nominal size

DN80

Tank connection

Flanged: 8 x 26mm holes on a 220mm PCD

Set pressure

From 6.90 Bar to 38.50 Bar

Materials

Contact parts: 316 stainless steel

Pressure seal: RTFE

Tank seal: PTFE

Alternatives are available, refer to the Design Options page

Design Conditions

Weight:	30.5 Kg
Design Pressure (MAWP):	38.5 Bar
Test Pressure:	57.75 Bar
Design Temperature Min:	-55°C
Design Temperature Max:	65°C

NOTE: The Design Temperature limits refer to metal parts only. The Design Conditions and Section View dimensions are for the specified part number only.

Design Codes

BS EN 14129

Obeys TPED, ADR, UKCA

Design Approval

LRQA

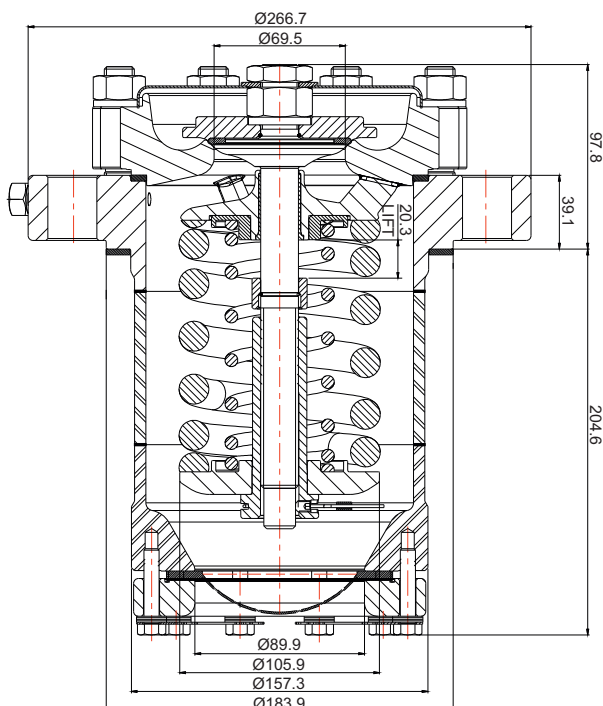
Related Parts

Description	Part No.
PTFE gasket	5005-812
Pressure gauge: 0-20 Bar *Note	92X/20XXXX
Pressure gauge: 0-40 Bar *Note	92X/40XXXX
Pressure gauge: 0-60 Bar *Note	92X/60XXXX
Emergency blank cap: 015/ series valve**	015/0070X
Emergency blank cap: 005/ series valve**	005/0060X

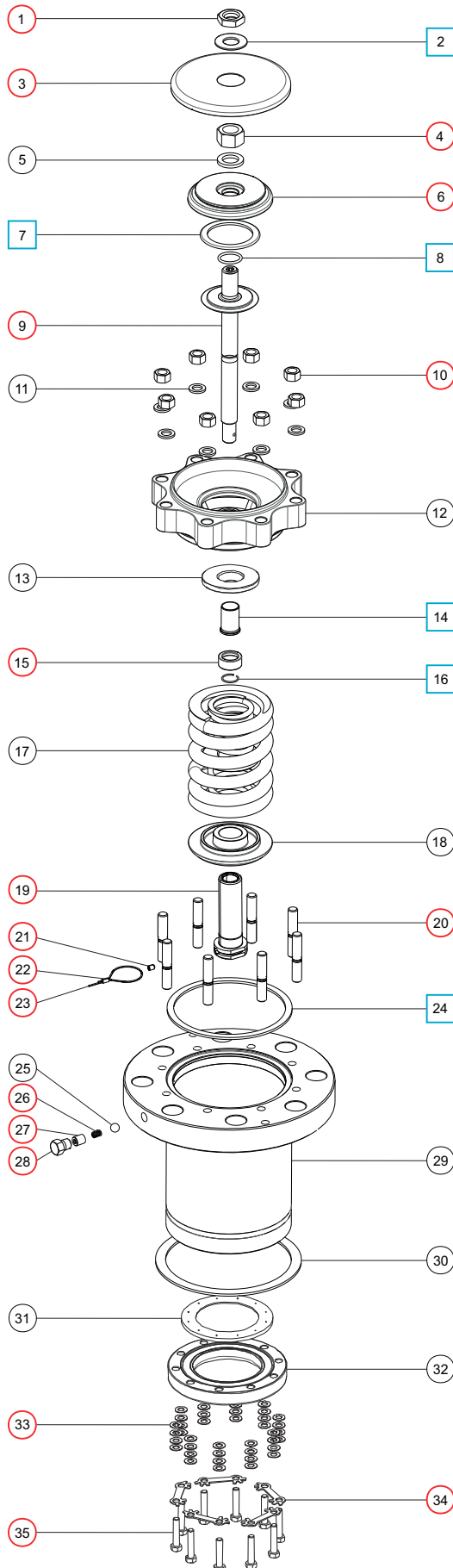
NOTE: The specification changes the part no.

****IMPORTANT:** Emergency blank caps have a pressure limit. Check with Fort Vale for compatibility.

Section View



Parts Drawing



Parts List

Item	Description	Part No.	
1	M20 lock nut	5112-036	○
2	Cowl retaining washer	055/0135	□ ○
3	Cowl	055/0130	○
4	M20 full nut	5112-033	○
5	M20 spring washer	5113-016	
6	Poppet head	055/0127	○
7	RTFE main seal	5005-825	□ ○
8	Neoprene O ring	5005-995	□ ○
9	Poppet stem assembly	055/0120X	○
10	M16 full nut (8)	5112-003	○
11	M16 spring washer (8)	5113-012	
12	Body weld assembly	055/0207	
13	Top spring locator *Note	055/0116X	
14	Spindle guide bush	055/0115	□ ○
15	Stop collar	055/0125	○
16	Retaining ring clip	055/0114	□ ○
17	Spring pair *Note	8104-XXXX	
18	Bottom spring locator *Note	055/0110X	
19	Spring retainer	055/0020	○
20	M16 stud (8)	055/0055	○
21	M6 set screw	5111-133	○
22	Ferrule	SF1.5	○
23	Anti-tamper wire	6110-119	○
24	PTFE gasket	5005-826	□ ○
25	11mm ball	055/0031	
26	Spring	5104-115	○
27	Ball seal	055/0030	○
28	¼" BSP taper plug	5128-009	○
29	Burst disc holder	055/0190	
30	PTFE seal (supplied separate)	5005-812	
31	89mm burst disc (supplied separate)	864/XXXX	
32	Burst disc support flange	044/1034	
33	8mm Belleville washer (40)	5113-020	○
34	Anti-rotation tab (5)	055/0025	○
35	Hex bolt (10)	5111-011	○

NOTE: The top and bottom spring locators and the spring pair are a set with compatible dimensions. Please contact Fort Vale if you need to replace one of these parts.

Seal Kit

Description	Part No.
All parts marked □ in the Parts List	005/00SK

Repair Kit

Description	Part No.
All parts marked ○ in the Parts List	015/00RK