



Specification

Nominal size

DN80

Tank connection

Flanged: 8 x 18mm holes on a 184.2mm PCD

Set pressure

From 6.90 Bar to 38.50 Bar

Materials

Contact parts: 316 stainless steel

Pressure seal: RTFE

Tank seal: PTFE

Alternatives are available, refer to the Design Options page

Design Conditions

Weight:	11.4 Kg
Design Pressure (MAWP):	38.5 Bar
Test Pressure:	57.75 Bar
Design Temperature Min:	-55°C
Design Temperature Max:	65°C

NOTE: The Design Temperature limits refer to metal parts only. The Design Conditions and Section View dimensions are for the specified part number only.

Design Codes

BS EN 14129

Obeys TPED, ADR, UKCA

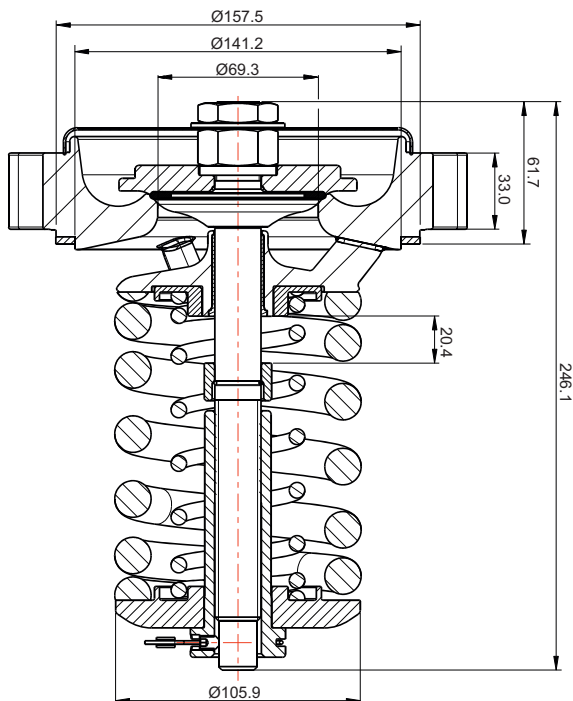
Design Approval

LRQA

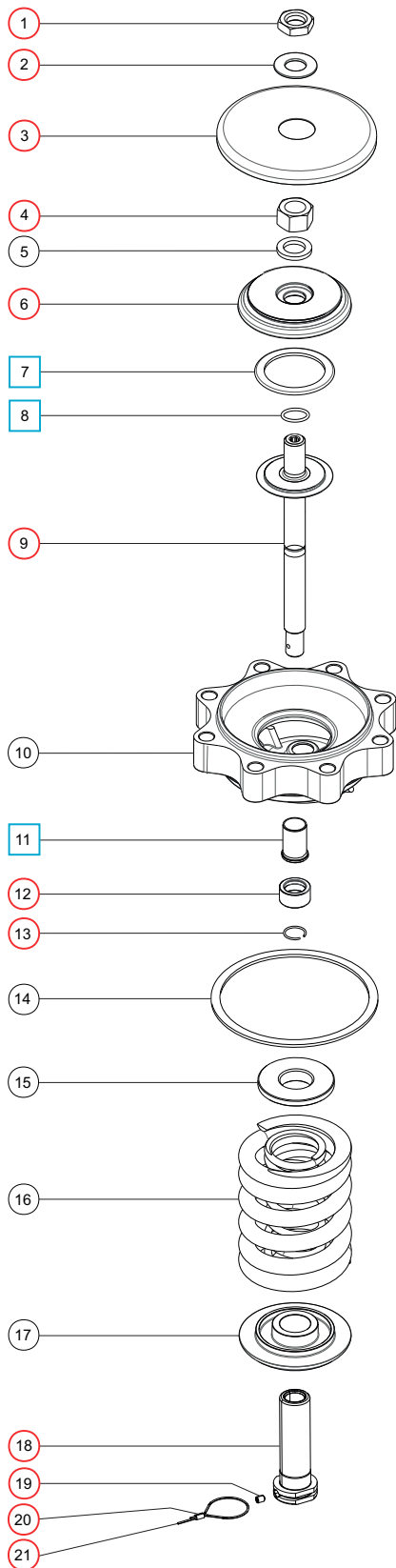
Related Parts

Description	Part No.
PTFE gasket	5005-826

Section View



Parts Drawing



Parts List

Item	Description	Part No.	
1	M20 lock nut	5112-036	○
2	Cowl retaining washer	055/0135	○
3	Cowl	055/0130	○
4	M20 full nut	5112-033	○
5	M20 spring washer	5113-016	
6	Poppet head	055/0127	○
7	RTFE main seal	5005-825	□ ○
8	Neoprene O ring	5005-995	□ ○
9	Poppet stem assembly	055/0120	○
10	Body weld assembly	055/0207	
11	Spindle guide bush	055/0115	□ ○
12	Stop collar	055/0125	○
13	Retaining ring clip	055/0114	○
14	PTFE gasket (supplied separate)	5005-826	
15	Top spring locator *Note	055/0116X	
16	Spring pair *Note	8104-XXXX	
17	Bottom spring locator *Note	055/0110X	
18	Spring nut	055/0020	○
19	M6 set screw	5111-133	○
20	Ferrule	SF1.5	○
21	Anti-tamper wire	6110-119	○

NOTE: The top and bottom spring locators and the spring pair are a set with compatible dimensions. Please contact Fort Vale if you need to replace one of these parts.

Seal Kit

Description	Part No.
All parts marked □ in the Parts List	006/00SK

Repair Kit

Description	Part No.
All parts marked ○ in the Parts List	016/00RK