

Specification

Nominal size/body angle

80mm / 30°

Inlet connection - dual drilled

8 x 14mm holes equi-spaced on a 177.8mm PCD &
4 x 18mm holes equi-spaced on a 177.8mm PCD

Outlet connection

Flanged: 4 x 17mm holes on a 160mm PCD

Materials

Seating area: Superseat (alloy 625)

Contact parts: 316 stainless steel

Main seal: Fortyt

Alternatives are available, refer to the Design Options page

Design Conditions

Weight:	8.4 Kg
Design Pressure (MAWP):	4 Bar
Test Pressure:	7.3 Bar
Design Temperature Min:	-40°C
Design Temperature Max:	200°C

NOTE: The Design Conditions and Section View dimensions are for the specified part number only.

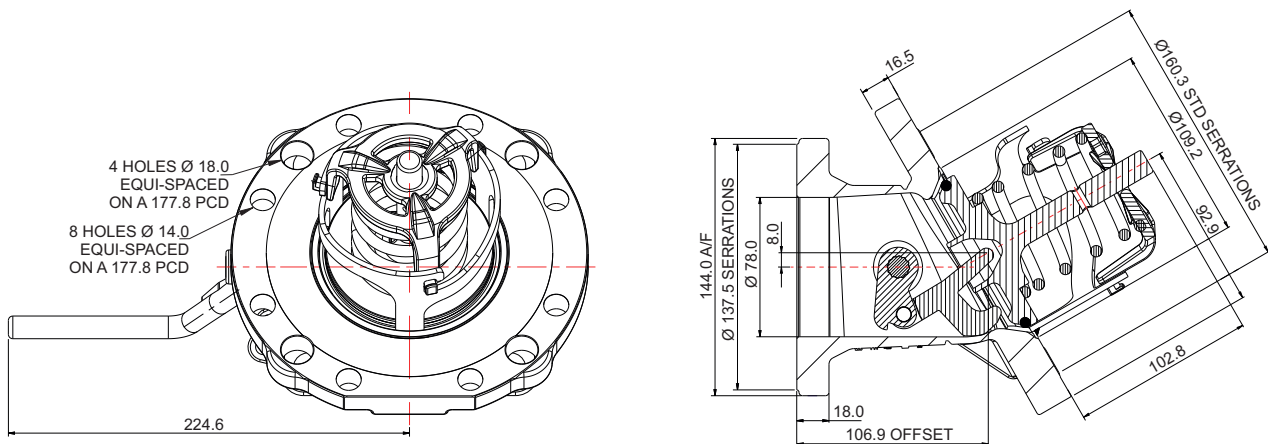
Design Codes

BS EN 14433 (BS space EN space - no year date)

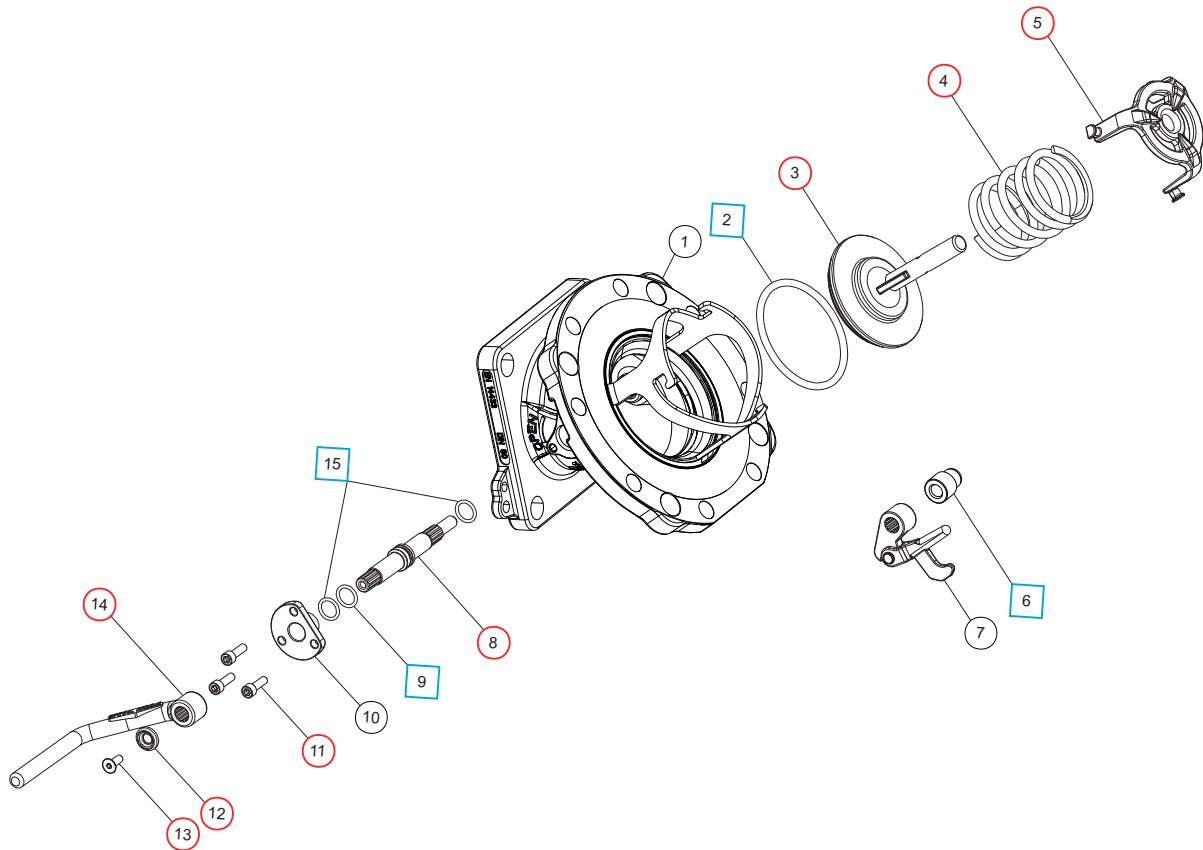
Related Parts

Description	Part No.
Weld-in flange - 8 hole	324/9000
Stud kit for 8 hole inlet	324/2070
CNAF/PTFE inlet gasket - 8 hole	5005-015
Weld-in flange - 4 hole	341/001L
Stud kit for 4 hole inlet	311/3700
CNAF/PTFE inlet gasket - 4 hole	5005-032
CNAF/PTFE ring gasket	5005-049
CNAF/PTFE square outlet gasket	5005-195
Valve operation decal	326/0300

Section View



Parts Drawing



Parts List

Item	Description	Part No.	
1	Body	830/3100B	
2	Fortyt O ring	5005-104	□ ○
3	Solid poppet	324/2020	○
4	Spring	5104-971	○
5	Spring top plate	290/6104	○
6	PTFE crankshaft end bush	20362	□ ○
7	Crank block assembly	821/0300	
8	Spindle	821/0010	○
9	Viton O ring	20361	□ ○
10	Stuffing clamp	324/1004	
11	M6 x 20mm capscrew (3)	5111-017	○
12	Handle retaining washer	20370	○
13	Handle retaining screw	5111-030	○
14	Handle	330/5010	○
15	PTFE O ring	20363	□ ○

Seal Kit

Description	Part No.
All parts marked □ in the Parts List	826/00SK

Repair Kit

Description	Part No.
All parts marked ○ in the Parts List	826/00RKA

Spare Part Kit

Description	Part No.
Spindle & crank block assembly	821/0200
Includes item 6, 7, 8, 9 & 15	