

Specification

Nominal size/body angle
80mm / 30°

Inlet connection

Flanged: 8 x 14mm holes equi-spaced on a 178mm PCD

Outlet connection

Flanged: 4 x 17mm holes on a 160mm PCD

Materials

Contact parts: 316 stainless steel
Main seal: Fortyt

Alternatives are available, refer to the Design Options page

Design Conditions

Weight:	10.0 Kg
Design Pressure (MAWP):	4 Bar
Test Pressure:	6 Bar
Design Temperature Min:	-40°C
Design Temperature Max:	200°C

NOTE: The Design Conditions and Section View dimensions are for the specified part number only.

Design Codes

BS EN 14433

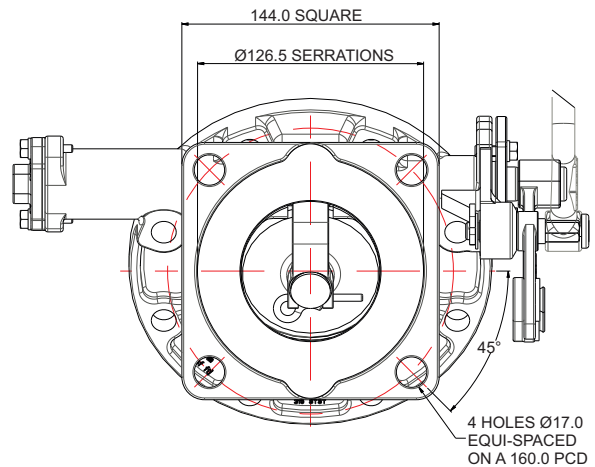
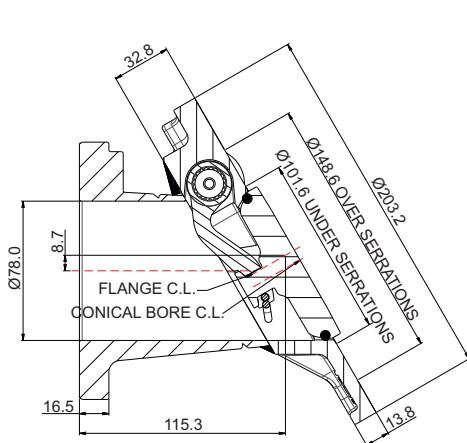
Range

Description	Part No.
With 4 hole outlet flange	848/1000A
With 6 hole outlet flange	848/0000A

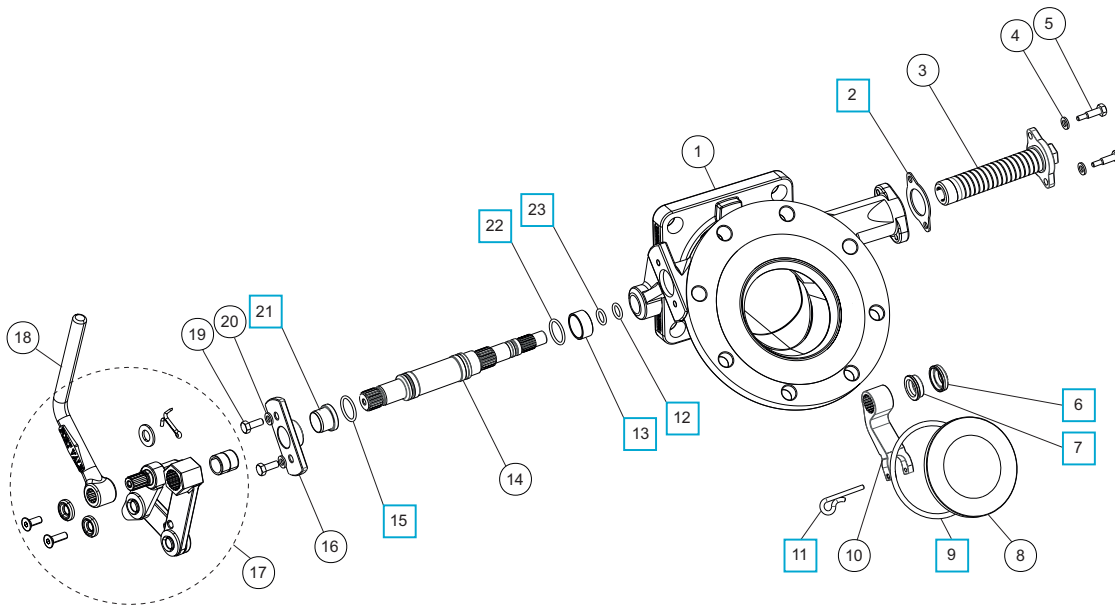
Related Parts

Description	Part No.
Weld-in flange	324/9030
Stud kit	845/2040
CNAF/PTFE inlet gasket	5005-015
CNAF/PTFE outlet ring gasket	5005-049
CNAF/PTFE outlet gasket - 6 hole	5005-169
Valve operation decal	845/0320

Section View



Parts Drawing



Parts List

Item	Description	Part No.
1	Body	848/1100
2	Spring boss gasket	5005-845 <input type="checkbox"/> <input type="radio"/>
3	Spring assembly	845/0050
4	Spring washer (2)	5113-008
5	Clamp screw (2)	845/0017
6	Bush seal	845/0064 <input type="checkbox"/> <input type="radio"/>
7	Seal energizer	845/0063 <input type="checkbox"/> <input type="radio"/>
8	Poppet	845/0040 <input type="radio"/>
9	Fortyt O ring	5005-104 <input type="checkbox"/> <input type="radio"/>
10	Lifting fork	845/0010 <input type="radio"/>
11	Retaining pin	845/0015 <input type="checkbox"/> <input type="radio"/>
12	Perfluoroelastomer O ring	10133PHT <input type="checkbox"/> <input type="radio"/>
13	Spindle bearing	845/0062 <input type="checkbox"/> <input type="radio"/>
14	Spindle	845/0200 <input type="radio"/>
15	Viton O ring	5005-336 <input type="checkbox"/> <input type="radio"/>
16	Stuffing clamp	845/0016
17	Handle linkage assembly	324/8910
18	Handle *Refer to Handle Options Table	
19	Clamp bolt (2)	5111-022
20	Spring washer (2)	5113-008
21	Stuffing seal	845/0061 <input type="checkbox"/> <input type="radio"/>
22	Perlast O ring	5005-384 <input type="checkbox"/> <input type="radio"/>
23	PTFE O ring	5005-008 <input type="checkbox"/> <input type="radio"/>

Footvalve Handle Options

Specification	Type	Part No.
Std. Cleanflow handle		324/8670
Cranked Cleanflow handle		324/8671
Std. Highlift handle		330/5010

Seal Kit

Description	Part No.
All parts marked <input type="checkbox"/> in the Parts List	845/00SK

Repair Kit

Description	Part No.
All parts marked <input type="radio"/> in the Parts List	845/00RK