



Specification

Nominal size

50mm

Tank connection

Flanged: 6 x 14mm holes on a 168mm PCD

Outlet/Process connection

Flanged: 4 x open slots - 2" ASA150 / 2" BSTD / DIN50 PN10

Properties

Ball with bleed hole and body with gauge connection to monitor tank pressure. Handle with TIR. With blind flange

Materials

Contact parts: 316 stainless steel

Main seal: PTFE

Alternative tank connections are available, refer to Fort Vale

Design Conditions

Weight:	13.5 Kg
Design Pressure (MAWP):	7.5 Bar
Test Pressure:	13.8 Bar
Design Temperature Min:	-40°C
Design Temperature Max:	205°C

NOTE: The Design Conditions and Section View dimensions are for the specified part number only.

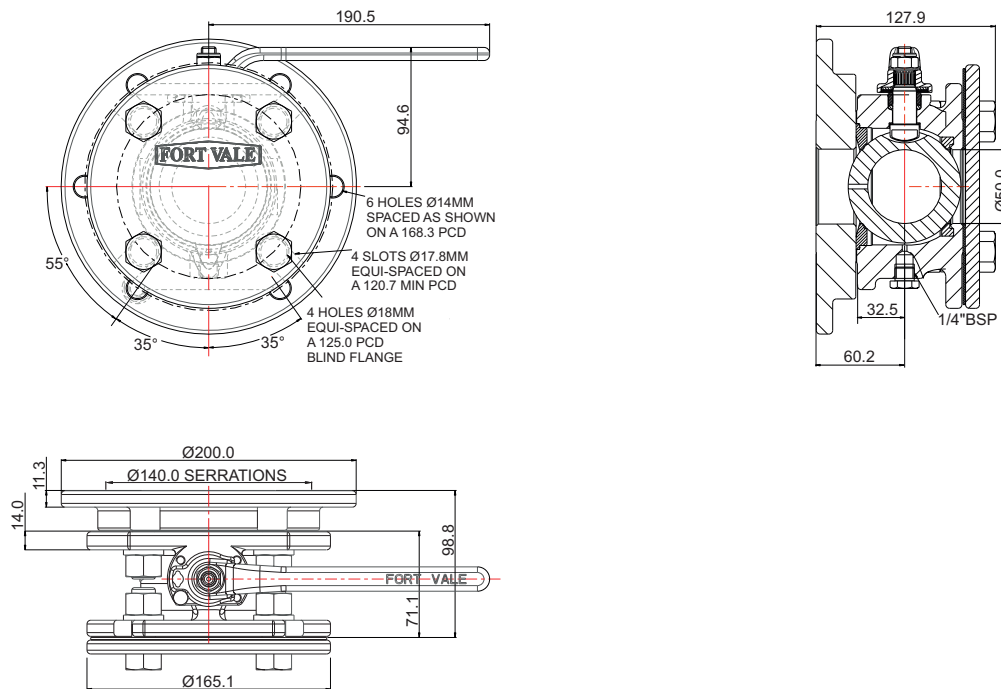
Design Code

BS EN14432

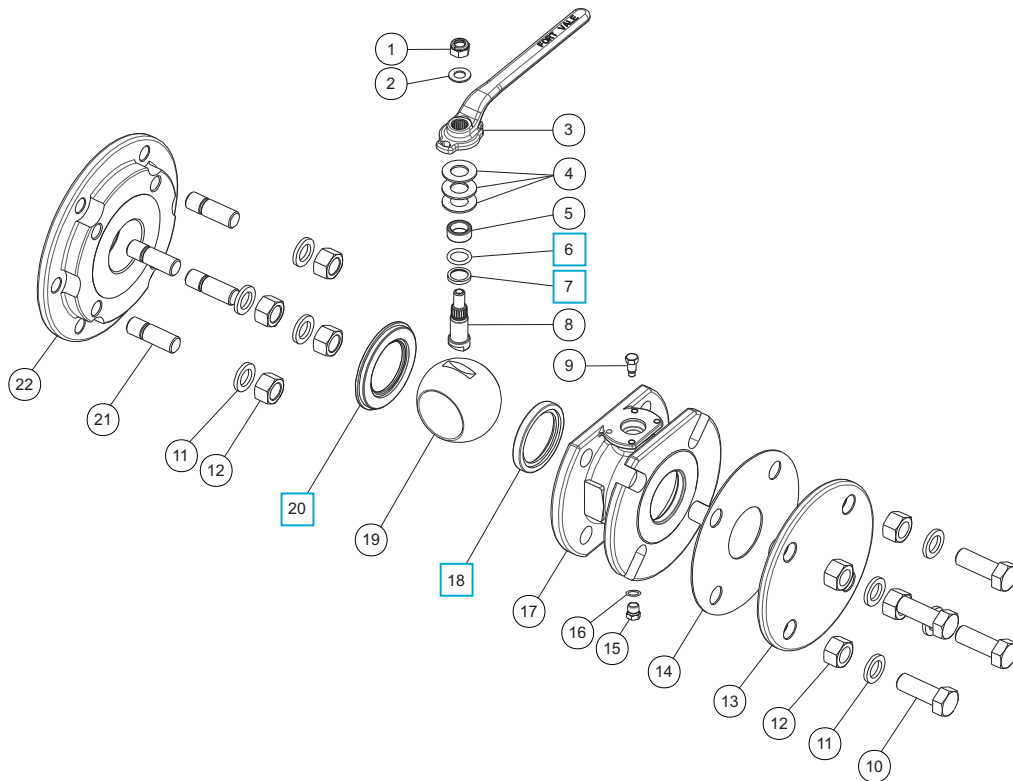
Related Parts

Description	Part No.
Tank weld-in flange	368/0800
Stud kit	312/1000
Solid PTFE inlet gasket	5005-222P
Syphon tube stub pipe	368/0810
CNAF/PTFE gasket	5005-169

Section View



Parts Drawing



Parts List

Item	Description	Part No.
1	M10 self locking nut	5112-008
2	M10 plain washer	5113-009
3	Handle	370/0125
4	16mm Belleville washer (3)	5113-038
5	Stuffing collar	370/0103
6	PTFE O ring	5005-688 <input type="checkbox"/>
7	Bottom bearing bush	370/0104 <input type="checkbox"/>
8	Spindle	370/0120
9	Stop bolt	370/0107
10	M16 hex bolt (4)	5111-031
11	M16 spring washer (8)	5113-012
12	M16 full nut (8)	5112-003
13	Blind flange	370/4239
14	PTFE gasket	5005-724P
15	1/4" BSP hex plug	5128-005
16	PTFE O ring	5005-048
17	2" ball valve body	370/0115
18	PTFE ball seal	370/0102 <input type="checkbox"/>
19	2" ball	370/3309
20	PTFE ball seal	370/0105 <input type="checkbox"/>
21	M16 stud (4)	S0600/3
22	Adaptor flange	370/0145

Seal Kit

Description	Part No.
All parts marked <input type="checkbox"/> in the Parts List	370/01SK