

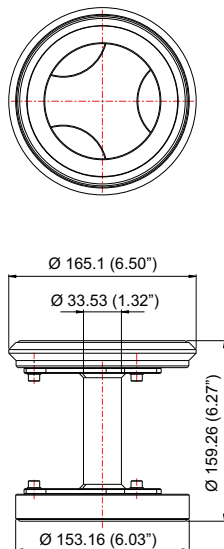


4" API Coupler Seal Replacement Tool - this tool may be used to assist the replacement of the spindle seals and seal carrier seals on a 4" API Coupler either in-situ on the loading gantry or dismantled from the loading gantry.

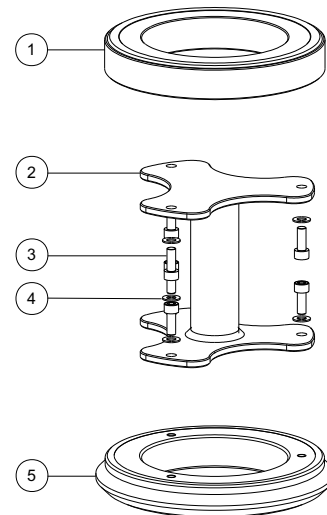
Weight 4.5 Kg

Fitting Details

Part Number : 400/9420



Parts Drawing



Item	Description	Part No.
1	Seal carrier replacement seal	94/2112
2	Handle assembly seal replacement tool	94/2116
3	M6 x 16mm cap screw (6)	5111-015
4	M6 plain washer (6)	5113-001
5	4" API coupler spindle seal replacement	94/2111

Instructions

CAUTION!

The loading gantry must be drained and isolated when using this tool to replace seals with a coupler in-situ on a gantry. A safe working procedure must be followed when using this tool to prevent product discharge from the loading gantry.

To replace the spindle seals in a Fort Vale API coupler in the closed and interlocked position.

Insert the formed end into the inner housing of the coupler and press sharply against the triggers. This will snap the outer body forward and release the handle interlock. Turn the operating handle to open the coupler. The poppet will travel into the tool and stop in the part opened position. This will release the internal energy applied to the spindle in the closed position.

Follow the standard maintenance procedure to replace the spindle seal.

To replace the seal carrier seals in a Fort Vale API coupler in the closed and interlocked position.

Insert the plain end into the inner housing of the coupler and press sharply against the triggers. This will snap the outer body forward and release the handle interlock. Remove the tool and slowly open the coupler. The seal carrier housing can be accessed.

Follow the standard maintenance procedure to replace the spindle seal.