



Specification

Nominal size

50mm

Body type

Clamped

Properties

Left hand operated, handle with TIR and padlock slots

Materials

Contact parts: 316 stainless steel

Main seal: PTFE

Alternatives are available, refer to the Design Options page

Design Conditions

Weight:	2.2 Kg
Design Pressure (MAWP):	6 Bar
Test Pressure:	10 Bar
Design Temperature Min:	-40°C
Design Temperature Max:	200°C

NOTE: The Design Conditions and Section View dimensions are for the specified part number only.

Design Code

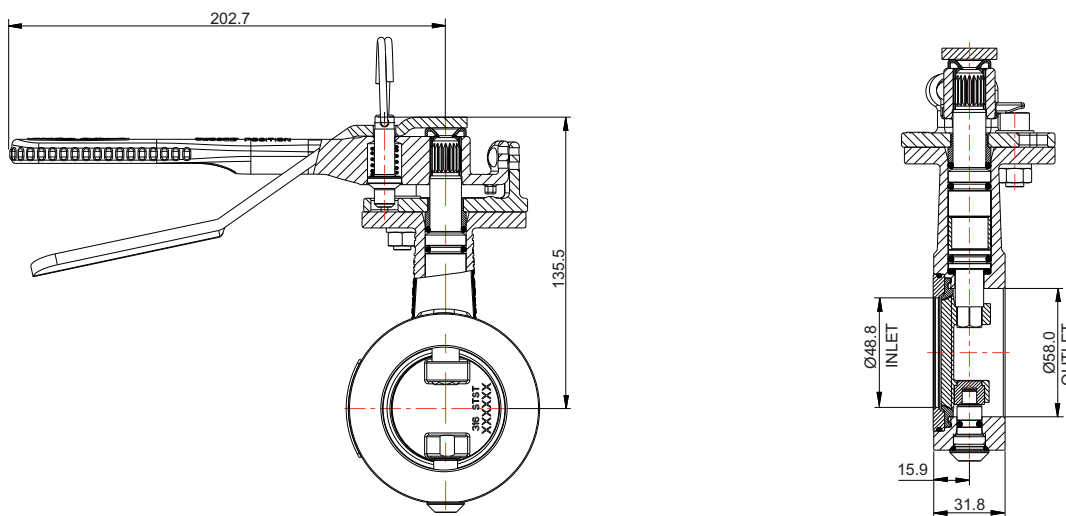
BS EN 14432

Related Parts

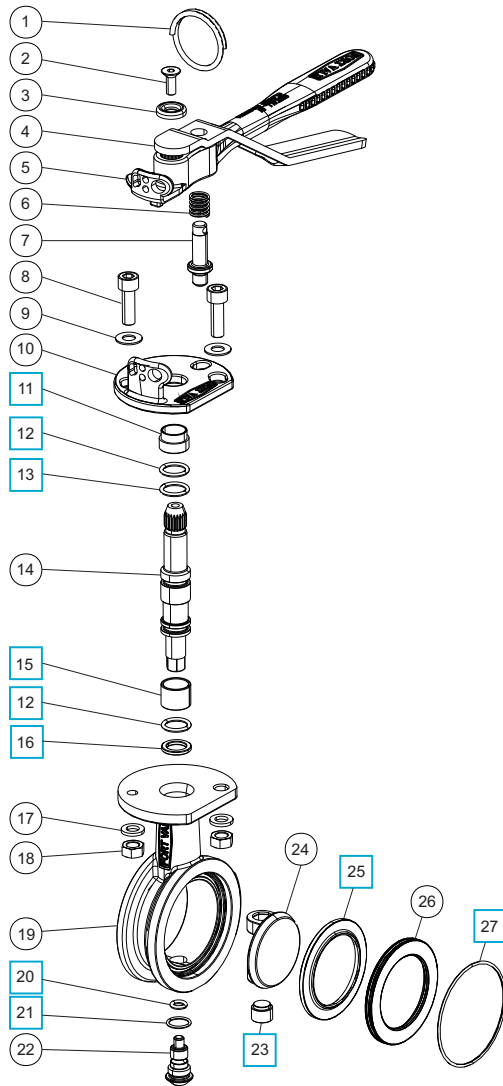
Description	Part No.
CNAF/PTFE inlet gasket *Note	5005-724
CNAF/PTFE outlet gasket *Note	6005-610

NOTE: Gasket drilling 4 x 18mm holes on a 125mm PCD

Section View



Parts Drawing



Parts List

Item	Description	Part No.	
1	Split ring	368/0011	
2	M6 countersunk bolt	5111-030	
3	Washer	20370	
4	Operating lever	368/9837	
5	Handle	368/0050	
6	Handle location spring	368/0012	
7	Handle location pin	368/0010	
8	Sockethead capscrew (2)	5111-148	
9	Plain washer (2)	5113-005	
10	Stuffing clamp	368/0040	
11	PTFE stuffing clamp bush	368/0301	<input type="checkbox"/>
12	PTFE O ring (2)	20363	<input type="checkbox"/>
13	Viton O ring	20361	<input type="checkbox"/>
14	Spindle	355/5020	
15	Split bearing	252/0517	<input type="checkbox"/>
16	PTFE spindle seat	355/5009	<input type="checkbox"/>
17	Spring washer (2)	5113-003	
18	Full nut (2)	5112-001	
19	Body	355/7010	
20	PTFE O ring	5005-541	<input type="checkbox"/>
21	PTFE O ring	5005-048	<input type="checkbox"/>
22	Bottom spindle	355/5005	
23	PTFE lower bush	355/5007	<input type="checkbox"/>
24	Closure plate	355/5030	
25	PTFE main seal	355/0202	<input type="checkbox"/>
26	Seal clamp plate	355/0201	
27	EPDM O ring	5005-476	<input type="checkbox"/>

Seal Kit

Description	Part No.
All parts marked <input type="checkbox"/> in the Parts List	355/70SK