

Specification

Nominal size

25mm

Tank connection

Flanged: 4 x 11mm holes on a 103.5mm PCD

Outlet/process connection

Flanged: 4 x 18mm slots on a 100mm to 125mm PCD

Options

Finish: Corrosion-resistant paint on external surfaces to prevent damage from corrosive cargo vapour/splash

Materials

Contact parts: PFA lined

Main seal: PTFE

Refer to Range for other PFA Lined Ball Valves

Alternatives are available, refer to the Design Options page

Design Conditions

Weight:	5.0 Kg
Design Pressure (MAWP):	6.9 Bar
Test Pressure:	12.8 Bar
Design Temperature Min:	-40°C
Design Temperature Max:	200°C

NOTE: The Design Conditions and Section View dimensions are for the specified part number only.

Design Code

BS EN14432

Range

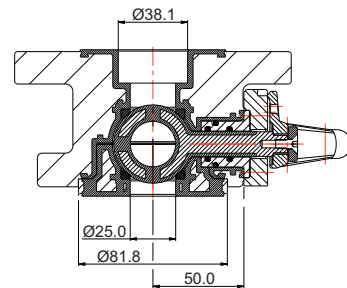
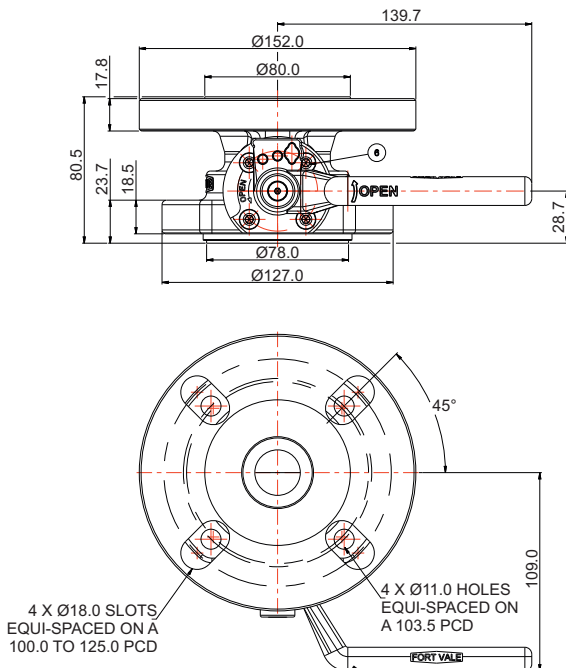
Description	Part No.
25mm reduced bore ball valve PFA lined	530/P100
50mm full bore ball valve PFA lined	370/P200
80mm full bore ball valve PFA lined	360/P030X *

*The part number changes for left or right hand operated

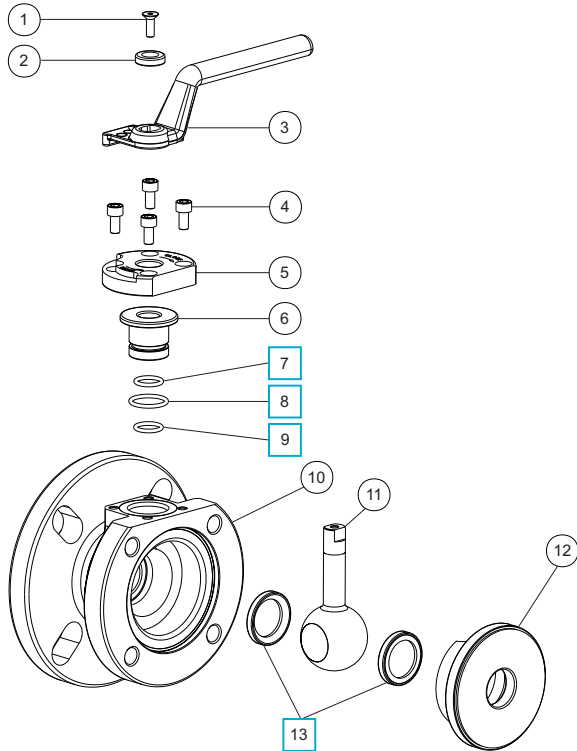
Related Parts

Description	Part No.
Weld-in flange	350/0024
Stud kit	355/1250
Blind flange	530/8053CM
Solid PTFE outlet gasket	5005-348
Bolting kit	311/3510

Section View



Parts Drawing



Parts List

Item	Description	Part No.
1	M5 socket screw	5111-111
2	Retaining washer	20370/5
3	Handle	530/0020/1
4	M6 button screw (4)	5121-013
5	Stuffing clamp	530/1014
6	Seal carrier	530/1013
7	Perfluoroelastomer O ring	5005-586 <input type="checkbox"/>
8	Perfluoroelastomer O ring	5005-384 <input type="checkbox"/>
9	Fortyt O ring	5005-601 <input type="checkbox"/>
10	PFA lined body	530/P110/2
11	PFA lined obturator	530/1010L
12	PFA lined clamp plate	530/1011P
13	PTFE front/rear seal (2)	530/0024 <input type="checkbox"/>

Seal Kit

Description	Part No.
All parts marked <input type="checkbox"/> in the Parts List	530/P1SK